

Datasheet for ABIN7189530
anti-IL17C antibody (AA 81-130)[Go to Product page](#)

3 Images

Overview

Quantity:	100 µg
Target:	IL17C
Binding Specificity:	AA 81-130
Reactivity:	Human
Host:	Rabbit
Clonality:	Polyclonal
Conjugate:	This IL17C antibody is un-conjugated
Application:	ELISA, Immunohistochemistry (IHC)

Product Details

Immunogen:	Synthetic peptide from Human protein at AA range: 81-130
Isotype:	IgG
Cross-Reactivity:	Human
Purification:	The antibody was affinity-purified from rabbit serum by affinity-chromatography using specific immunogen.

Target Details

Target:	IL17C
Alternative Name:	IL17C (IL17C Products)
Background:	CX2 antibody, Cytokine CX2 antibody, IL 17C antibody, IL 21 antibody, IL-17C antibody, IL17C

Target Details

antibody, IL17C_HUMAN antibody, Interleukin 17C antibody, Interleukin-17C antibody, MGC126884 antibody, MGC138401 antibody

UniProt: [Q9P0M4](#)

Pathways: [Cellular Response to Molecule of Bacterial Origin](#)

Application Details

Application Notes: IHC:1:50-300, ELISA:1:10000-20000,

Restrictions: For Research Use only

Handling

Format: Liquid

Buffer: PBS, pH 7.4, containing 0.02 % sodium azide as Preservative and 50 % Glycerol.

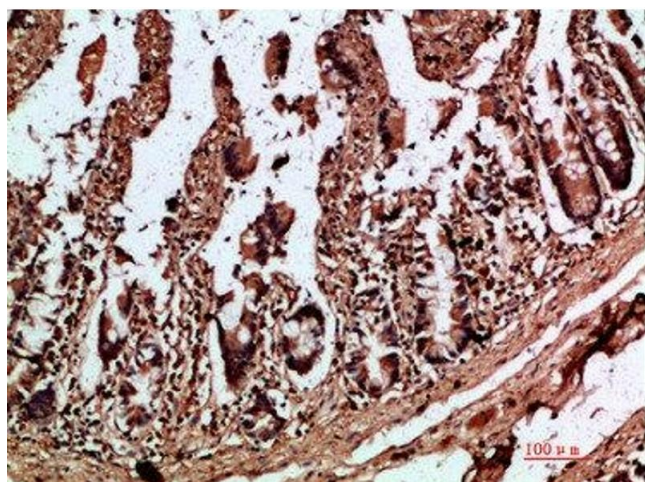
Preservative: Sodium azide

Precaution of Use: This product contains Sodium azide: a POISONOUS AND HAZARDOUS SUBSTANCE which should be handled by trained staff only.

Storage: -20 °C,-80 °C

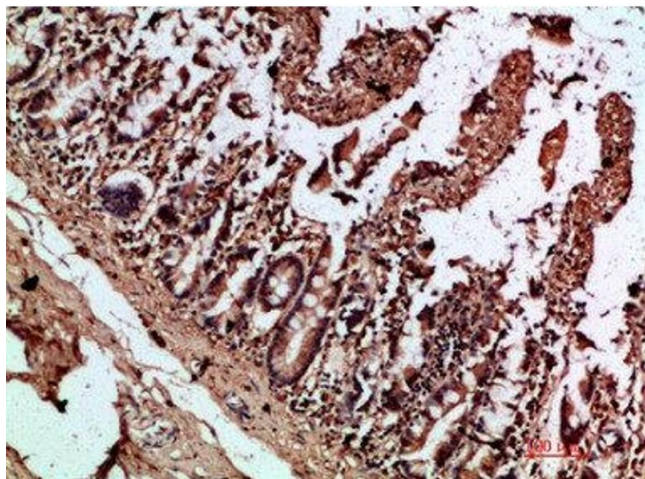
Storage Comment: Upon receipt, store at -20°C or -80°C. Avoid repeated freeze.

Images



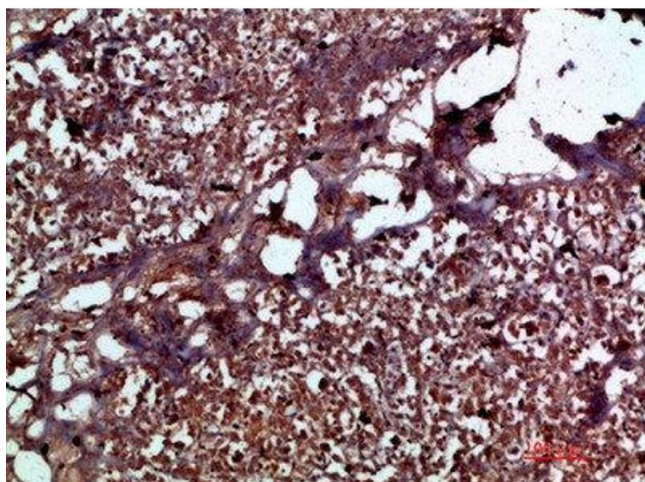
Immunohistochemistry

Image 1. Immunohistochemical analysis of paraffin-embedded human-colon, antibody was diluted at 1:200



Immunohistochemistry

Image 2. Immunohistochemical analysis of paraffin-embedded human-colon, antibody was diluted at 1:200



Immunohistochemistry

Image 3. Immunohistochemical analysis of paraffin-embedded human-pancreas, antibody was diluted at 1:200