

Datasheet for ABIN7189531
anti-IL17F antibody (AA 81-130)



[Go to Product page](#)

2 Images

Overview

Quantity:	100 µg
Target:	IL17F
Binding Specificity:	AA 81-130
Reactivity:	Human
Host:	Rabbit
Clonality:	Polyclonal
Conjugate:	This IL17F antibody is un-conjugated
Application:	ELISA, Immunohistochemistry (IHC)

Product Details

Immunogen:	Synthetic peptide from Human protein at AA range: 81-130
Isotype:	IgG
Cross-Reactivity:	Human
Purification:	The antibody was affinity-purified from rabbit serum by affinity-chromatography using specific immunogen.

Target Details

Target:	IL17F
Alternative Name:	IL17F (IL17F Products)
Background:	CANDF6 antibody, Cytokine ML 1 antibody, Cytokine ML-1 antibody, IL 17F antibody, IL 24

Target Details

antibody, IL-17F antibody, IL-24 antibody, IL17f antibody, IL17F_HUMAN antibody, Interleukin 17F antibody, Interleukin 24 antibody, Interleukin-17F antibody, Interleukin-24 antibody, ML 1 antibody, ML1 antibody, Mutant IL 17F antibody, OTTHUMP00000016602 antibody

UniProt:	Q96PD4
Pathways:	Cellular Response to Molecule of Bacterial Origin , Positive Regulation of Endopeptidase Activity

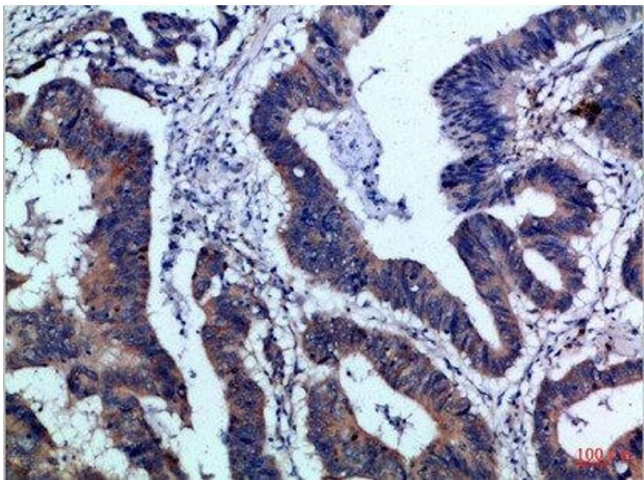
Application Details

Application Notes:	IHC:1:50-300, ELISA:1:10000-20000,
Restrictions:	For Research Use only

Handling

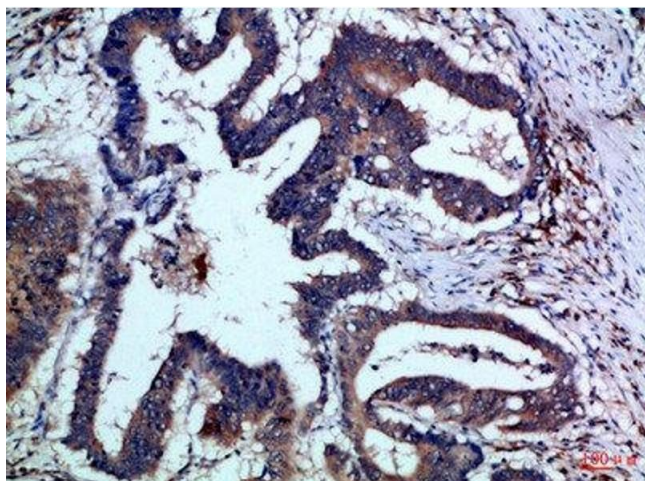
Format:	Liquid
Buffer:	PBS, pH 7.4, containing 0.02 % sodium azide as Preservative and 50 % Glycerol.
Preservative:	Sodium azide
Precaution of Use:	This product contains Sodium azide: a POISONOUS AND HAZARDOUS SUBSTANCE which should be handled by trained staff only.
Storage:	-20 °C,-80 °C
Storage Comment:	Upon receipt, store at -20°C or -80°C. Avoid repeated freeze.

Images



Immunohistochemistry

Image 1. Immunohistochemical analysis of paraffin-embedded Human-colon-cancer, antibody was diluted at 1:100



Immunohistochemistry

Image 2. Immunohistochemical analysis of paraffin-embedded Human-colon-cancer, antibody was diluted at 1:100