



Datasheet for ABIN7189535  
**anti-MIA antibody (AA 90-131)**



[Go to Product page](#)

2 Images

Overview

Quantity:	100 µg
Target:	MIA
Binding Specificity:	AA 90-131
Reactivity:	Human
Host:	Rabbit
Clonality:	Polyclonal
Conjugate:	This MIA antibody is un-conjugated
Application:	ELISA, Immunohistochemistry (IHC)

Product Details

Immunogen:	Synthetic peptide from Human protein at AA range: 90-131
Isotype:	IgG
Cross-Reactivity:	Human
Purification:	The antibody was affinity-purified from rabbit serum by affinity-chromatography using specific immunogen.

Target Details

Target:	MIA
Alternative Name:	MIA ( <a href="#">MIA Products</a> )
Background:	Cartilage derived retinoic acid sensitive protein antibody, CD RAP antibody, CDRAP antibody,

## Target Details

Melanoma derived growth regulatory protein precursor antibody, Melanoma inhibitory activity protein antibody, Melanoma-derived growth regulatory protein antibody, Mia antibody, MIA\_HUMAN antibody

UniProt: [Q16674](#)

## Application Details

Application Notes: IHC:1:50-300, ELISA:1:10000-20000,

Restrictions: For Research Use only

## Handling

Format: Liquid

Buffer: PBS, pH 7.4, containing 0.02 % sodium azide as Preservative and 50 % Glycerol.

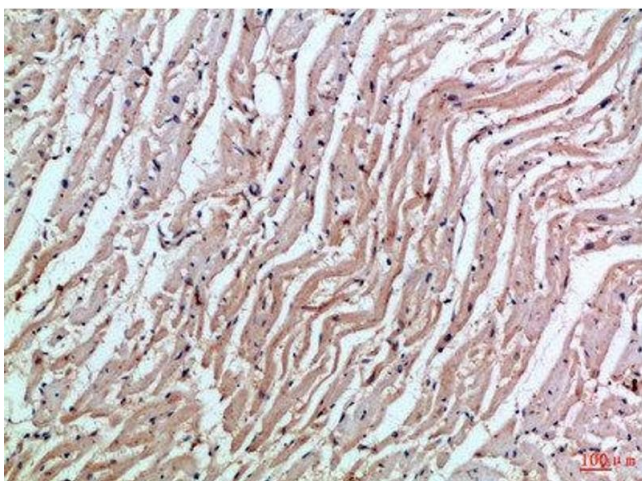
Preservative: Sodium azide

Precaution of Use: This product contains Sodium azide: a POISONOUS AND HAZARDOUS SUBSTANCE which should be handled by trained staff only.

Storage: -20 °C,-80 °C

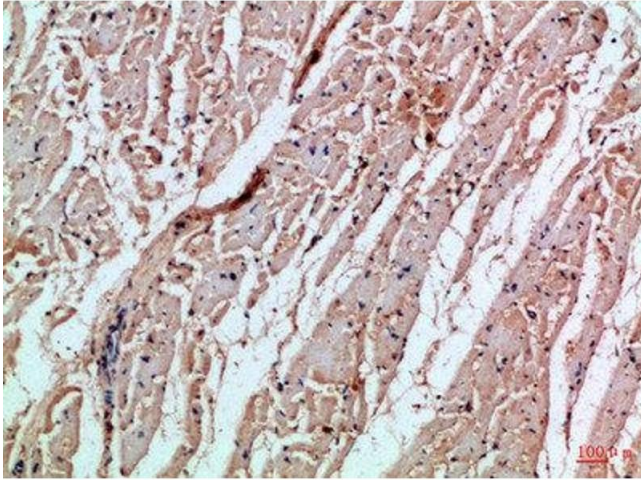
Storage Comment: Upon receipt, store at -20°C or -80°C. Avoid repeated freeze.

## Images



### Immunohistochemistry

**Image 1.** Immunohistochemical analysis of paraffin-embedded Human-heart, antibody was diluted at 1:100



### Immunohistochemistry

**Image 2.** Immunohistochemical analysis of paraffin-embedded Human-heart, antibody was diluted at 1:100