

Datasheet for ABIN7189536
anti-FABP2 antibody (AA 90-132)

3 Images

[Go to Product page](#)

Overview

Quantity:	100 µg
Target:	FABP2
Binding Specificity:	AA 90-132
Reactivity:	Human
Host:	Rabbit
Clonality:	Polyclonal
Conjugate:	This FABP2 antibody is un-conjugated
Application:	Western Blotting (WB), Immunohistochemistry (IHC), ELISA

Product Details

Immunogen:	Synthetic peptide from Human protein at AA range: 90-132
Isotype:	IgG
Cross-Reactivity:	Human, Mouse, Rat
Purification:	The antibody was affinity-purified from rabbit serum by affinity-chromatography using specific immunogen.

Target Details

Target:	FABP2
Alternative Name:	FABP2 (FABP2 Products)
Background:	FABP 2 antibody, FABP2 antibody, FABPI antibody, FABPI_HUMAN antibody, Fatty acid binding

Target Details

protein 2 intestinal antibody, Fatty acid binding protein antibody, Fatty acid binding protein intestinal antibody, Fatty acid-binding protein 2 antibody, Fatty acid-binding protein antibody, I FABP antibody, I-FABP antibody, IFABP antibody, intestinal antibody, intestinal FABP antibody, Intestinal fatty acid binding protein 2 antibody, Intestinal-type fatty acid-binding protein antibody, MGC133132 antibody, OTTHUMP00000163925 antibody

UniProt: [P12104](#)

Application Details

Application Notes: WB:1:500-2000, IHC:1:50-300, ELISA:1:10000-20000,

Restrictions: For Research Use only

Handling

Format: Liquid

Buffer: PBS, pH 7.4, containing 0.02 % sodium azide as Preservative and 50 % Glycerol.

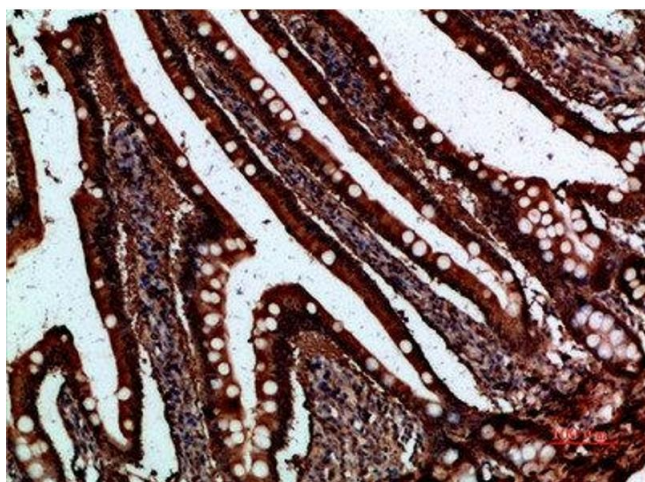
Preservative: Sodium azide

Precaution of Use: This product contains Sodium azide: a POISONOUS AND HAZARDOUS SUBSTANCE which should be handled by trained staff only.

Storage: -20 °C,-80 °C

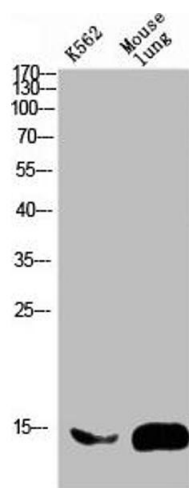
Storage Comment: Upon receipt, store at -20°C or -80°C. Avoid repeated freeze.

Images



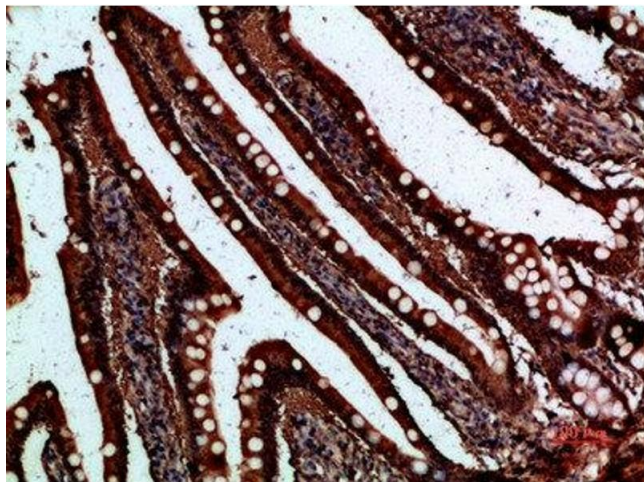
Immunohistochemistry

Image 1. Immunohistochemical analysis of paraffin-embedded human-small-intestine, antibody was diluted at 1:200



Western Blotting

Image 2. Western blot analysis of mouse-brain mouse-spinal-cord lysate, antibody was diluted at 2000. Secondary antibody was diluted at 1:20000



Immunohistochemistry

Image 3. Immunohistochemical analysis of paraffin-embedded human-small-intestine, antibody was diluted at 1:200