

Datasheet for ABIN7189537
anti-IL16 antibody (AA 900-960)[Go to Product page](#)

1 Image

Overview

Quantity:	100 µg
Target:	IL16
Binding Specificity:	AA 900-960
Reactivity:	Human
Host:	Rabbit
Clonality:	Polyclonal
Conjugate:	This IL16 antibody is un-conjugated
Application:	Western Blotting (WB), ELISA

Product Details

Immunogen:	Synthetic peptide from Human protein at AA range: 900-960
Isotype:	IgG
Cross-Reactivity:	Human
Purification:	The antibody was affinity-purified from rabbit serum by affinity-chromatography using specific immunogen.

Target Details

Target:	IL16
Alternative Name:	IL16 (IL16 Products)
Background:	HGNC:5980 antibody, HsT19289 antibody, IL-16 antibody, IL16 antibody, IL16_HUMAN

Target Details

antibody, Interleukin 16 precursor antibody, Interleukin-16 antibody, LCF antibody, Lymphocyte chemoattractant factor antibody, Neuronal interleukin 16 antibody, NIL16 antibody, prIL 16 antibody, PrIL16 antibody, Prointerleukin 16 antibody

UniProt: [Q14005](#)

Application Details

Application Notes: WB:1:500-2000, ELISA:1:10000-20000,

Restrictions: For Research Use only

Handling

Format: Liquid

Buffer: PBS, pH 7.4, containing 0.02 % sodium azide as Preservative and 50 % Glycerol.

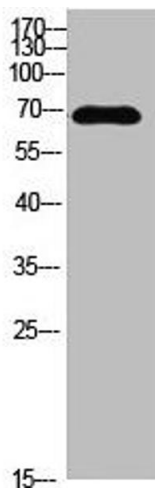
Preservative: Sodium azide

Precaution of Use: This product contains Sodium azide: a POISONOUS AND HAZARDOUS SUBSTANCE which should be handled by trained staff only.

Storage: -20 °C,-80 °C

Storage Comment: Upon receipt, store at -20°C or -80°C. Avoid repeated freeze.

Images



Western Blotting

Image 1. Western blot analysis of MCF7 SW480 MOUSE-LIVER mouse-lung MOUSE-KIDNEY lysate, antibody was diluted at 500. Secondary antibody was diluted at 1:20000