



[Go to Product page](#)

Datasheet for ABIN7189558

anti-TUBE1 antibody

2 Images

Overview

| | |
|--------------|--------------------------------------|
| Quantity: | 100 µg |
| Target: | TUBE1 |
| Reactivity: | Human |
| Host: | Mouse |
| Clonality: | Monoclonal |
| Conjugate: | This TUBE1 antibody is un-conjugated |
| Application: | Immunohistochemistry (IHC), ELISA |

Product Details

| | |
|-------------------|--------------------------------------|
| Immunogen: | Synthetic Peptide of Epsilon Tubulin |
| Isotype: | IgG |
| Cross-Reactivity: | Human, Mouse, Rat |
| Purification: | Affinity purified |

Target Details

| | |
|-------------------|--|
| Target: | TUBE1 |
| Alternative Name: | TUBE1 (TUBE1 Products) |
| Background: | Tubulin epsilon chain (Epsilon-tubulin) |
| UniProt: | Q9UJT0 |
| Pathways: | Microtubule Dynamics |

Application Details

Application Notes: Recommended dilution:IHC:1:100-1:200,

Restrictions: For Research Use only

Handling

Format: Liquid

Buffer: Liquid in PBS containing 50 % glycerol, 0.5 % BSA and 0.02 % sodium azide.

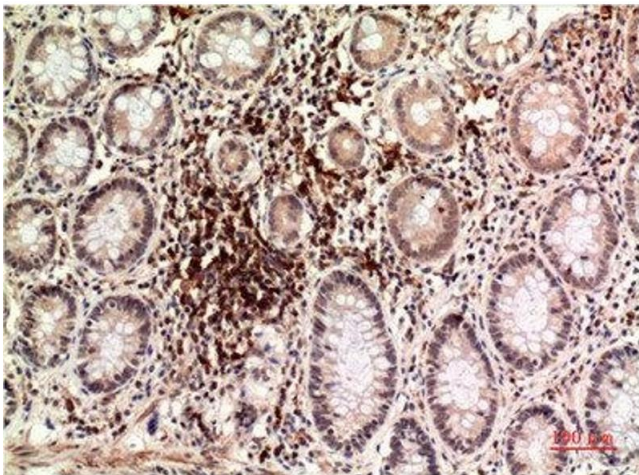
Preservative: Sodium azide

Precaution of Use: This product contains Sodium azide: a POISONOUS AND HAZARDOUS SUBSTANCE which should be handled by trained staff only.

Storage: -20 °C,-80 °C

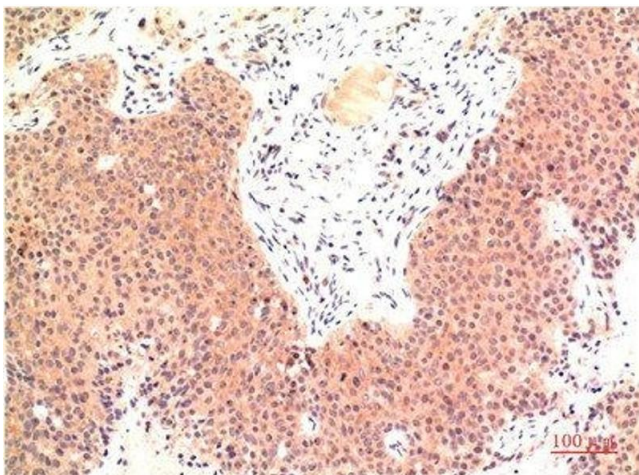
Storage Comment: Upon receipt, store at -20°C or -80°C. Avoid repeated freeze.

Images



Immunohistochemistry

Image 1. Immunohistochemical analysis of paraffin-embedded Human Colon Carcinoma Tissue using Epsilon Tubulin Mouse mAb diluted at 1:200.



Immunohistochemistry

Image 2. Immunohistochemical analysis of paraffin-embedded Human Colon Carcinoma Tissue using Epsilon Tubulin Mouse mAb diluted at 1:200.