



[Go to Product page](#)

Datasheet for ABIN7189569  
**anti-AADACL4 antibody**

1 Image

Overview

Quantity:	100 µL
Target:	AADACL4
Reactivity:	Human
Host:	Rabbit
Clonality:	Polyclonal
Conjugate:	This AADACL4 antibody is un-conjugated
Application:	Western Blotting (WB), ELISA

Product Details

Immunogen:	Synthetic peptide of Human AADACL4
Isotype:	IgG
Cross-Reactivity:	Human
Purification:	Antigen affinity purification

Target Details

Target:	AADACL4
Alternative Name:	AADACL4 ( <a href="#">AADACL4 Products</a> )
Background:	Background: Arylacetamide deacetylase-like 4 is a protein in humans that is encoded by the AADACL4 gene. It belongs to the 'GDXG' lipolytic enzyme family. The subcellular location of this protein in the membrane, it is single-pass type II membrane protein. It has signal-anchor, transmembrane and transmembrane helix domain. Function as Hydrolase.

## Target Details

Aliases: AADACL4Arylacetamide deacetylase-like 4 antibody, EC 3.1.1.- antibody

UniProt: [Q5VUY2](#)

## Application Details

Application Notes: ELISA:1:1000-1:2000, WB:1:200-1:1000,

Restrictions: For Research Use only

## Handling

Format: Liquid

Buffer: -20 °C, pH 7.4 PBS, 0.05 % Sodium azide, 40 % Glycerol

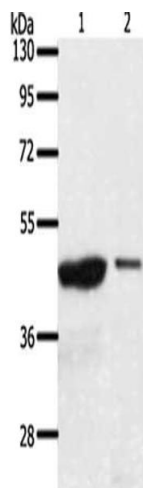
Preservative: Sodium azide

Precaution of Use: This product contains Sodium azide: a POISONOUS AND HAZARDOUS SUBSTANCE which should be handled by trained staff only.

Storage: -20 °C,-80 °C

Storage Comment: Upon receipt, store at -20°C or -80°C. Avoid repeated freeze.

## Images



### Western Blotting

**Image 1.** Gel: 10 % SDS-PAGE, Lysate: 40 µg, Lane 1-2: 231 cells, A549 cells, Primary antibody: ABIN7189569(AADACL4 Antibody) at dilution 1/100, Secondary antibody: Goat anti rabbit IgG at 1/8000 dilution, Exposure time: 30 minutes