

Datasheet for ABIN7189588

anti-ABCC12 antibody[Go to Product page](#)**1** Image

Overview

Quantity:	100 µL
Target:	ABCC12
Reactivity:	Human
Host:	Rabbit
Clonality:	Polyclonal
Conjugate:	This ABCC12 antibody is un-conjugated
Application:	ELISA, Immunohistochemistry (IHC)

Product Details

Immunogen:	Synthetic peptide of Human ABCC12
Isotype:	IgG
Cross-Reactivity:	Human, Mouse, Rat
Purification:	Antigen affinity purification

Target Details

Target:	ABCC12
Alternative Name:	ABCC12 (ABCC12 Products)
Background:	Background: This gene is a member of the superfamily of ATP-binding cassette (ABC) transporters and the encoded protein contains two ATP-binding domains and 12 transmembrane regions. ABC proteins transport various molecules across extra- and intracellular membranes. ABC genes are divided into seven distinct subfamilies: ABC1,

Target Details

MDR/TAP, MRP, ALD, OABP, GCN20, and White. This gene is a member of the MRP subfamily which is involved in multi-drug resistance. This gene and another subfamily member are arranged head-to-tail on chromosome 16q12.1. Increased expression of this gene is associated with breast cancer.

Aliases: 4930467B22Rik antibody, ABCC 12 antibody, Abcc12 antibody, ATP binding cassette sub family C (CFTR MRP) member 12 antibody, ATP binding cassette protein C12 antibody, ATP binding cassette transporter sub family C member 12 antibody, ATP binding cassette, sub family C, member 12 antibody, ATP-binding cassette sub-family C member 12 antibody, MGC27071 antibody, MRP9 antibody, MRP9_HUMAN antibody, Multidrug resistance associated protein 9 antibody, Multidrug resistance-associated protein 9 antibody

UniProt: [Q96J65](#)

Application Details

Application Notes: ELISA:1:1000-1:2000, IHC:1:15-1:50,

Restrictions: For Research Use only

Handling

Format: Liquid

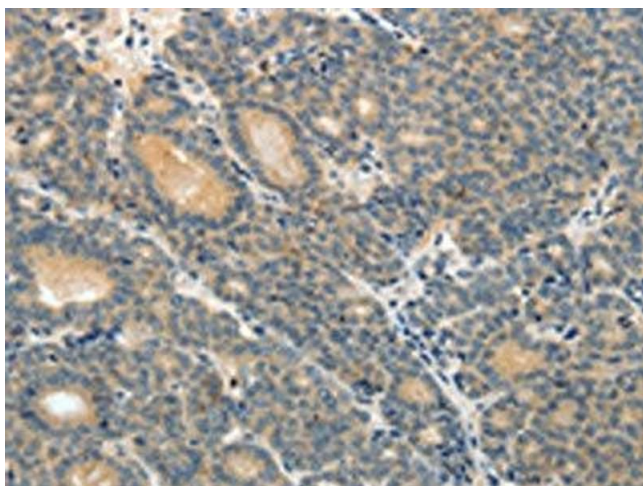
Buffer: -20 °C, pH 7.4 PBS, 0.05 % Sodium azide, 40 % Glycerol

Preservative: Sodium azide

Precaution of Use: This product contains Sodium azide: a POISONOUS AND HAZARDOUS SUBSTANCE which should be handled by trained staff only.

Storage: -20 °C, -80 °C

Storage Comment: Upon receipt, store at -20°C or -80°C. Avoid repeated freeze.



Immunohistochemistry

Image 1. The image on the left is immunohistochemistry of paraffin-embedded Human thyroid cancer tissue using ABIN7189588(ABCC12 Antibody) at dilution 1/10, on the right is treated with synthetic peptide. (Original magnification: x200)