

## Datasheet for ABIN7189590

### anti-ABCC3 antibody

[Go to Product page](#)

#### 1 Image

#### Overview

|              |                                      |
|--------------|--------------------------------------|
| Quantity:    | 100 µL                               |
| Target:      | ABCC3                                |
| Reactivity:  | Human                                |
| Host:        | Rabbit                               |
| Clonality:   | Polyclonal                           |
| Conjugate:   | This ABCC3 antibody is un-conjugated |
| Application: | ELISA, Immunohistochemistry (IHC)    |

#### Product Details

|                   |                                  |
|-------------------|----------------------------------|
| Immunogen:        | Synthetic peptide of Human ABCC3 |
| Isotype:          | IgG                              |
| Cross-Reactivity: | Human, Mouse                     |
| Purification:     | Antigen affinity purification    |

#### Target Details

|                   |  |
|-------------------|--|
| Target:           | ABCC3  |
| Alternative Name: | ABCC3 ( <a href="#">ABCC3 Products</a> )   |
| Background:       | Background: The protein encoded by this gene is a member of the superfamily of ATP-binding cassette (ABC) transporters. ABC proteins transport various molecules across extra- and intra-cellular membranes. ABC genes are divided into seven distinct subfamilies (ABC1, MDR/TAP, MRP, ALD, OABP, GCN20, White). This protein is a member of the MRP subfamily which is |

## Target Details

involved in multi-drug resistance. The specific function of this protein has not yet been determined, however, this protein may play a role in the transport of biliary and intestinal excretion of organic anions. Alternatively spliced variants which encode different protein isoforms have been described, however, not all variants have been fully characterized. [ Aliases: ABC 31 antibody, ABC31 antibody, ABCC 3 antibody, ABCC3 antibody, ATP binding cassette sub family C (CFTR/MRP) member 3 antibody, ATP binding cassette sub family C member 3 antibody, ATP-binding cassette sub-family C member 3 antibody, Canalicular multispecific organic anion transporter 2 antibody, Canicular multispecific organic anion transporter antibody, CMOAT 2 antibody, CMOAT2 antibody, EST90757 antibody, MLP 2 antibody, MLP2 antibody, MOAT D antibody, MOAT-D antibody, MOATD antibody, MRP 3 antibody, MRP3\_HUMAN antibody, Multi specific organic anion transporter D antibody, Multi-specific organic anion transporter D antibody, Multidrug resistance associated protein 3 antibody, Multidrug resistance associated protein antibody, Multidrug resistance-associated protein 3 antibody, Multispecific organic anion transporter D antibody

UniProt: [O15438](#)

## Application Details

Application Notes: ELISA:1:1000-1:2000, IHC:1:15-1:50,

Restrictions: For Research Use only

## Handling

Format: Liquid

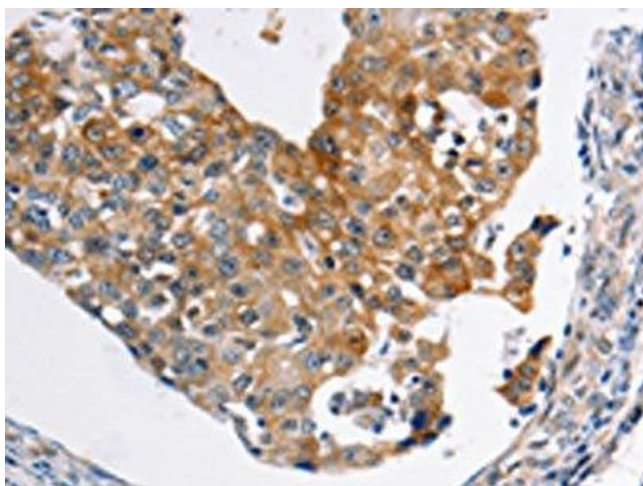
Buffer: -20 °C, pH 7.4 PBS, 0.05 % Sodium azide, 40 % Glycerol

Preservative: Sodium azide

Precaution of Use: This product contains Sodium azide: a POISONOUS AND HAZARDOUS SUBSTANCE which should be handled by trained staff only.

Storage: -20 °C,-80 °C

Storage Comment: Upon receipt, store at -20°C or -80°C. Avoid repeated freeze.



#### Immunohistochemistry

**Image 1.** The image on the left is immunohistochemistry of paraffin-embedded Human breast cancer tissue using ABIN7189590(ABCC3 Antibody) at dilution 1/20, on the right is treated with synthetic peptide. (Original magnification: x200)