

Datasheet for ABIN7189594

**anti-ABCC9 antibody****2** Images[Go to Product page](#)

## Overview

Quantity:	100 µL
Target:	ABCC9
Reactivity:	Human
Host:	Rabbit
Clonality:	Polyclonal
Conjugate:	This ABCC9 antibody is un-conjugated
Application:	Western Blotting (WB), Immunohistochemistry (IHC), ELISA

## Product Details

Immunogen:	Synthetic peptide of Human ABCC9
Isotype:	IgG
Cross-Reactivity:	Human, Mouse, Rat
Purification:	Antigen affinity purification

## Target Details

Target:	ABCC9
Alternative Name:	ABCC9 ( <a href="#">ABCC9 Products</a> )
Background:	Background: The protein encoded by this gene is a member of the superfamily of ATP-binding cassette (ABC) transporters. ABC proteins transport various molecules across extra- and intra-cellular membranes. ABC genes are divided into seven distinct subfamilies (ABC1, MDR/TAP, MRP, ALD, OABP, GCN20, White). This protein is a member of the MRP subfamily which is

## Target Details

involved in multi-drug resistance. This protein is thought to form ATP-sensitive potassium channels in cardiac, skeletal, and vascular and non-vascular smooth muscle.

Aliases: ABC37 antibody, abcC9 antibody, ABCC9\_HUMAN antibody, AI414027 antibody, AI449286 antibody, ATFB12 antibody, ATP-binding cassette sub-family C member 9 antibody, ATP-binding cassette transporter sub-family C member 9 antibody, ATP-binding cassette, sub-family C (CFTR/MRP), member 9 antibody, CANTU antibody, CMD10 antibody, FLJ36852 antibody, Sulfonylurea receptor 2 antibody, Sulfonylurea-binding protein 2 antibody, SUR2 antibody, SUR2A antibody, SUR2B antibody

UniProt: [O60706](#)

## Application Details

Application Notes: ELISA:1:1000-1:2000, WB:1:200-1:1000, IHC:1:40-1:150,

Restrictions: For Research Use only

## Handling

Format: Liquid

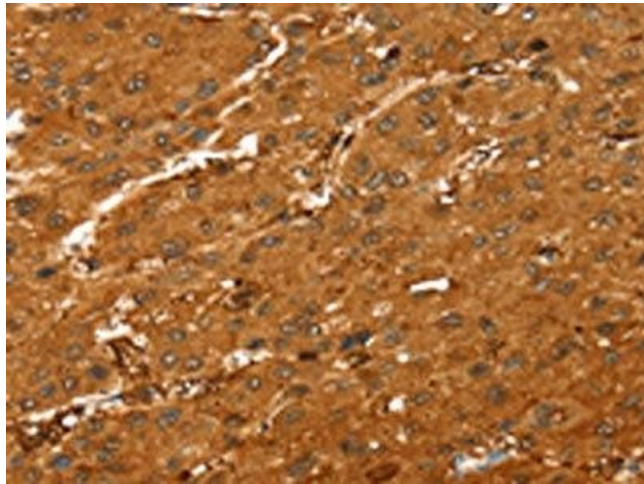
Buffer: -20 °C, pH 7.4 PBS, 0.05 % Sodium azide, 40 % Glycerol

Preservative: Sodium azide

Precaution of Use: This product contains Sodium azide: a POISONOUS AND HAZARDOUS SUBSTANCE which should be handled by trained staff only.

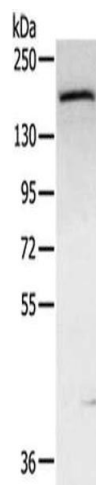
Storage: -20 °C, -80 °C

Storage Comment: Upon receipt, store at -20°C or -80°C. Avoid repeated freeze.



#### Immunohistochemistry

**Image 1.** The image on the left is immunohistochemistry of paraffin-embedded Human liver cancer tissue using ABIN7189594(ABCC9 Antibody) at dilution 1/35, on the right is treated with synthetic peptide. (Original magnification: x200)



#### Western Blotting

**Image 2.** Gel: 6 % SDS-PAGE, Lysate: 40 µg, Lane: Mouse bladder tissue, Primary antibody: ABIN7189594(ABCC9 Antibody) at dilution 1/300, Secondary antibody: Goat anti rabbit IgG at 1/8000 dilution, Exposure time: 5 minutes