

Datasheet for ABIN7189608

anti-ABL2 antibody

3 Images

[Go to Product page](#)

Overview

Quantity:	100 µL
Target:	ABL2
Reactivity:	Human
Host:	Rabbit
Clonality:	Polyclonal
Conjugate:	This ABL2 antibody is un-conjugated
Application:	Western Blotting (WB), ELISA, Immunohistochemistry (IHC)

Product Details

Immunogen:	Synthetic peptide of Human ABL2
Isotype:	IgG
Cross-Reactivity:	Human, Mouse
Purification:	Antigen affinity purification

Target Details

Target:	ABL2
Alternative Name:	ABL2 (ABL2 Products)
Background:	Background: This gene encodes a member of the Abelson family of nonreceptor tyrosine protein kinases. The protein is highly similar to the c-abl oncogene 1 protein, including the tyrosine kinase, SH2 and SH3 domains, and it plays a role in cytoskeletal rearrangements through its C-terminal F-actin- and microtubule-binding sequences. This gene is expressed in

Target Details

both normal and tumor cells, and is involved in translocation with the ets variant 6 gene in leukemia. Multiple alternatively spliced transcript variants encoding different protein isoforms have been found for this gene.

Aliases: Abelson murine leukemia viral oncogene homolog 2 antibody, Abelson related gene protein antibody, Abelson tyrosine-protein kinase 2 antibody, Abelson-related gene protein antibody, ABL2 antibody, ABL2_HUMAN antibody, ABL antibody, ARG antibody, Tyrosine kinase ARG antibody, Tyrosine protein kinase ABL2 antibody, Tyrosine-protein kinase ARG antibody, v abl Abelson murine leukemia viral oncogene homolog 2 antibody

UniProt: [P42684](#)

Application Details

Application Notes: ELISA:1:2000-1:5000, WB:1:500-1:2000, IHC:1:25-1:100,

Restrictions: For Research Use only

Handling

Format: Liquid

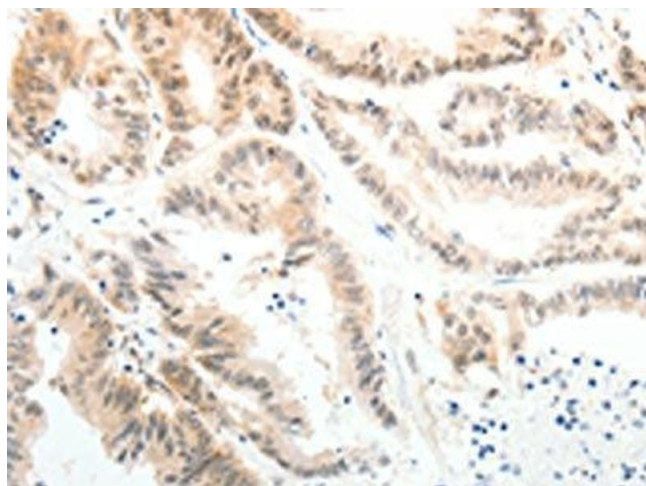
Buffer: -20 °C, pH 7.4 PBS, 0.05 % Sodium azide, 40 % Glycerol

Preservative: Sodium azide

Precaution of Use: This product contains Sodium azide: a POISONOUS AND HAZARDOUS SUBSTANCE which should be handled by trained staff only.

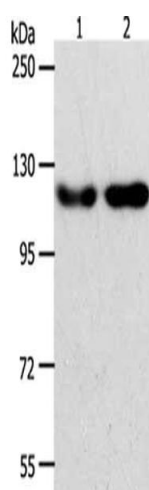
Storage: -20 °C, -80 °C

Storage Comment: Upon receipt, store at -20°C or -80°C. Avoid repeated freeze.



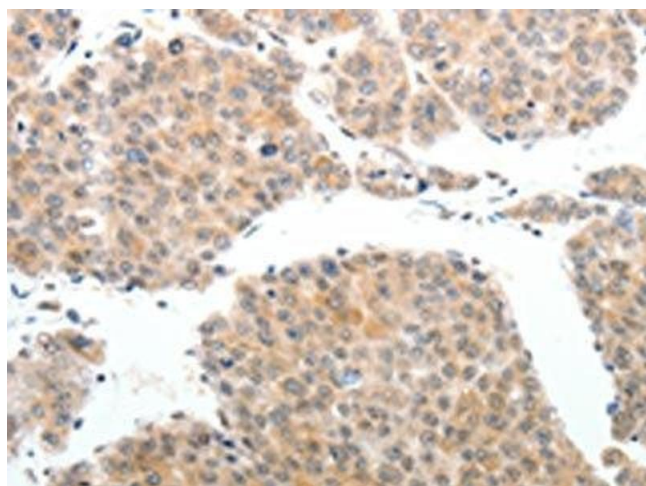
Immunohistochemistry

Image 1. The image on the left is immunohistochemistry of paraffin-embedded Human colon cancer tissue using ABIN7189608(ABL2 Antibody) at dilution 1/25, on the right is treated with synthetic peptide. (Original magnification: x200)



Western Blotting

Image 2. Gel: 8 % SDS-PAGE, Lysate: 40 µg, Lane 1-2: HeLa cells, Jurkat cells, Primary antibody: ABIN7189608(ABL2 Antibody) at dilution 1/400, Secondary antibody: Goat anti rabbit IgG at 1/8000 dilution, Exposure time: 2 minutes



Immunohistochemistry

Image 3. The image on the left is immunohistochemistry of paraffin-embedded Human liver cancer tissue using ABIN7189608(ABL2 Antibody) at dilution 1/25, on the right is treated with synthetic peptide. (Original magnification: x200)