

Datasheet for ABIN7189634

anti-Acrosin antibody

2 Images

[Go to Product page](#)

Overview

Quantity:	100 µL
Target:	Acrosin (ACR)
Reactivity:	Human
Host:	Rabbit
Clonality:	Polyclonal
Conjugate:	This Acrosin antibody is un-conjugated
Application:	Western Blotting (WB), ELISA, Immunohistochemistry (IHC)

Product Details

Immunogen:	Synthetic peptide of Human ACR
Isotype:	IgG
Cross-Reactivity:	Human
Purification:	Antigen affinity purification

Target Details

Target:	Acrosin (ACR)
Alternative Name:	ACR (ACR Products)
Background:	Background: Acrosin is the major proteinase present in the acrosome of mature spermatozoa. It is a typical serine proteinase with trypsin-like specificity. It is stored in the acrosome in its precursor form, proacrosin. The active enzyme functions in the lysis of the zona pellucida, thus facilitating penetration of the sperm through the innermost glycoprotein layers of the ovum.

Target Details

The mRNA for proacrosin is synthesized only in the postmeiotic stages of spermatogenesis. In humans proacrosin first appears in the haploid spermatids.

Aliases: Acr antibody, ACRO_HUMAN antibody, Acrosin heavy chain antibody, Acrosin precursor antibody, ACRS antibody, Preproacrosin antibody, Proacrosin antibody

UniProt: [P10323](#)

Pathways: [cAMP Metabolic Process](#)

Application Details

Application Notes: ELISA:1:1000-1:2000, WB:1:200-1:1000, IHC:1:15-1:50,

Restrictions: For Research Use only

Handling

Format: Liquid

Buffer: -20 °C, pH 7.4 PBS, 0.05 % Sodium azide, 40 % Glycerol

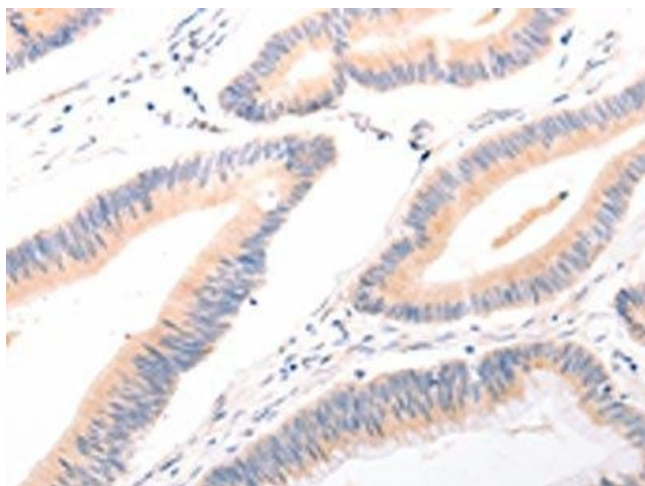
Preservative: Sodium azide

Precaution of Use: This product contains Sodium azide: a POISONOUS AND HAZARDOUS SUBSTANCE which should be handled by trained staff only.

Storage: -20 °C,-80 °C

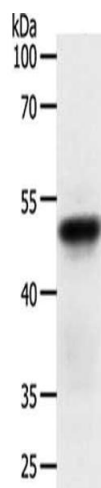
Storage Comment: Upon receipt, store at -20°C or -80°C. Avoid repeated freeze.

Images



Immunohistochemistry

Image 1. The image on the left is immunohistochemistry of paraffin-embedded Human colon cancer tissue using ABIN7189634(ACR Antibody) at dilution 1/20, on the right is treated with synthetic peptide. (Original magnification: x200)



Western Blotting

Image 2. Gel: 12 % SDS-PAGE, Lysate: 50 µg, Lane: A549 cells, Primary antibody: ABIN7189634(ACR Antibody) at dilution 1/200, Secondary antibody: Goat anti rabbit IgG at 1/8000 dilution, Exposure time: 40 seconds