

Datasheet for ABIN7189672
anti-ADCYAP1R1 antibody

3 Images

[Go to Product page](#)

Overview

| | |
|--------------|--|
| Quantity: | 100 µL |
| Target: | ADCYAP1R1 |
| Reactivity: | Human |
| Host: | Rabbit |
| Clonality: | Polyclonal |
| Conjugate: | This ADCYAP1R1 antibody is un-conjugated |
| Application: | Western Blotting (WB), Immunohistochemistry (IHC), ELISA |

Product Details

| | |
|-------------------|--------------------------------------|
| Immunogen: | Synthetic peptide of Human ADCYAP1R1 |
| Isotype: | IgG |
| Cross-Reactivity: | Human, Mouse |
| Purification: | Antigen affinity purification |

Target Details

| | |
|-------------------|---|
| Target: | ADCYAP1R1 |
| Alternative Name: | ADCYAP1R1 (ADCYAP1R1 Products) |
| Background: | Background: This gene encodes type I adenylate cyclase activating polypeptide receptor, which is a membrane-associated protein and shares significant homology with members of the glucagon/secretin receptor family. This receptor mediates diverse biological actions of adenylate cyclase activating polypeptide 1 and is positively coupled to adenylate cyclase. |

Target Details

Multiple alternatively spliced transcript variants encoding distinct isoforms have been identified.

Aliases: ADCYAP1 R1 antibody, ADCYAP1R 1 antibody, ADCYAP1R1 antibody, Adenylate cyclase activating polypeptide 1 (pituitary) receptor type 1 antibody, Adenylate cyclase activating polypeptide 1 (pituitary) receptor type I antibody, PAC 1 antibody, PAC1 antibody, PAC1R antibody, PACAP receptor 1 antibody, PACAP type I receptor antibody, PACAP-R-1 antibody, PACAP-R1 antibody, PACAP1 R antibody, PACAPR antibody, PACAPRI antibody, PACR_HUMAN antibody, Pituitary adenylate cyclase activating polypeptide 1 receptor type I Hiphop antibody, Pituitary adenylate cyclase activating polypeptide receptor antibody, Pituitary adenylate cyclase activating polypeptide type I receptor precursor antibody, Pituitary adenylate cyclase-activating polypeptide 1, receptor for antibody, Pituitary adenylate cyclase-activating polypeptide type I receptor antibody, pvr1 antibody

UniProt: [P41586](#)

Pathways: [Neurotrophin Signaling Pathway](#), [cAMP Metabolic Process](#), [Regulation of Carbohydrate Metabolic Process](#)

Application Details

Application Notes: ELISA:1:2000-1:10000, WB:1:1000-1:5000, IHC:1:50-1:200,

Restrictions: For Research Use only

Handling

Format: Liquid

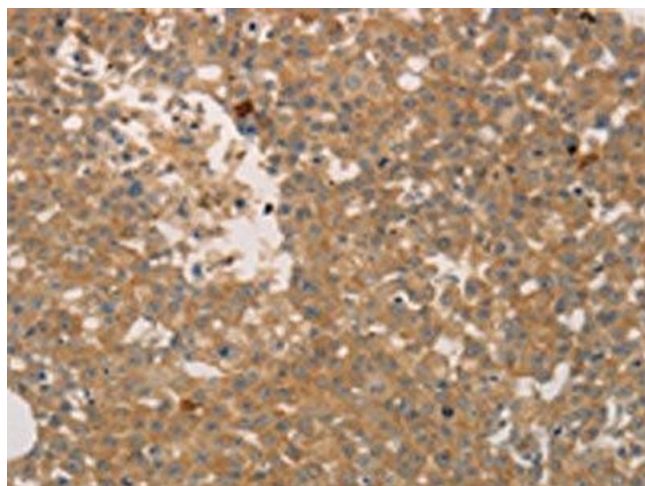
Buffer: -20 °C, pH 7.4 PBS, 0.05 % Sodium azide, 40 % Glycerol

Preservative: Sodium azide

Precaution of Use: This product contains Sodium azide: a POISONOUS AND HAZARDOUS SUBSTANCE which should be handled by trained staff only.

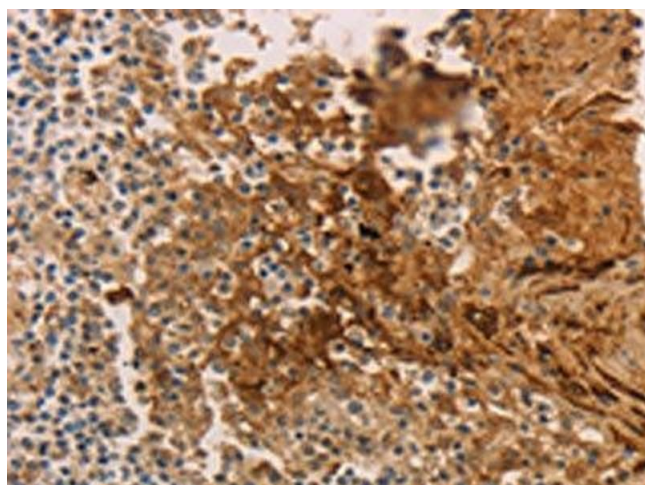
Storage: -20 °C, -80 °C

Storage Comment: Upon receipt, store at -20°C or -80°C. Avoid repeated freeze.



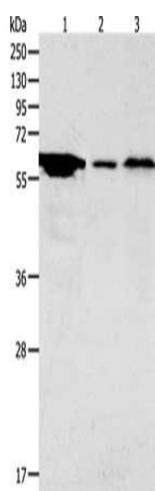
Immunohistochemistry

Image 1. The image on the left is immunohistochemistry of paraffin-embedded Human breast cancer tissue using ABIN7189672(ADCYAP1R1 Antibody) at dilution 1/70, on the right is treated with synthetic peptide. (Original magnification: x200)



Immunohistochemistry

Image 2. The image on the left is immunohistochemistry of paraffin-embedded Human tonsil tissue using ABIN7189672(ADCYAP1R1 Antibody) at dilution 1/70, on the right is treated with synthetic peptide. (Original magnification: x200)



Western Blotting

Image 3. Gel: 10 % SDS-PAGE, Lysate: 40 µg, Lane 1-3: Hela cells, Mouse stomach tissue, Mouse brain tissue, Primary antibody: ABIN7189672(ADCYAP1R1 Antibody) at dilution 1/2000, Secondary antibody: Goat anti rabbit IgG at 1/8000 dilution, Exposure time: 5 minutes