

Datasheet for ABIN7189699

anti-ADRA1B antibody

3 Images

[Go to Product page](#)

Overview

Quantity:	100 µL
Target:	ADRA1B
Reactivity:	Human
Host:	Rabbit
Clonality:	Polyclonal
Conjugate:	This ADRA1B antibody is un-conjugated
Application:	Western Blotting (WB), ELISA, Immunohistochemistry (IHC)

Product Details

Immunogen:	Synthetic peptide of Human ADRA1B
Isotype:	IgG
Cross-Reactivity:	Human, Mouse, Rat
Purification:	Antigen affinity purification

Target Details

Target:	ADRA1B
Alternative Name:	ADRA1B (ADRA1B Products)
Background:	Background: Alpha-1-adrenergic receptors (alpha-1-ARs) are members of the G protein-coupled receptor superfamily. They activate mitogenic responses and regulate growth and proliferation of many cells. There are 3 alpha-1-AR subtypes: alpha-1A, -1B and -1D, all of which signal through the Gq/11 family of G-proteins and different subtypes show different patterns of

Target Details

activation. This gene encodes alpha-1B-adrenergic receptor, which induces neoplastic transformation when transfected into NIH 3T3 fibroblasts and other cell lines. Thus, this normal cellular gene is identified as a protooncogene. This gene comprises 2 exons and a single large intron of at least 20 kb that interrupts the coding region.

Aliases: ADA1B_HUMAN antibody, ADRA 1 antibody, Adra 1b antibody, ADRA1 antibody, ADRA1B antibody, Adrenergic alpha 1B receptor antibody, Adrenergic receptor alpha 1b antibody, Adrenoceptor alpha 1B antibody, Alpha 1 adrenergic receptor antibody, Alpha 1B adrenoceptor antibody, Alpha 1B adrenoreceptor antibody, Alpha-1B adrenergic receptor antibody, Alpha-1B adrenoceptor antibody, Alpha-1B adrenoreceptor antibody, Alpha1 adrenergic receptor antibody, Alpha1B adrenergic receptor antibody, Alpha1BAR antibody

UniProt: [P35368](#)

Pathways: [AMPK Signaling](#), [Carbohydrate Homeostasis](#), [Regulation of Carbohydrate Metabolic Process](#)

Application Details

Application Notes: ELISA:1:1000-1:5000, WB:1:200-1:1000, IHC:1:25-1:100,

Restrictions: For Research Use only

Handling

Format: Liquid

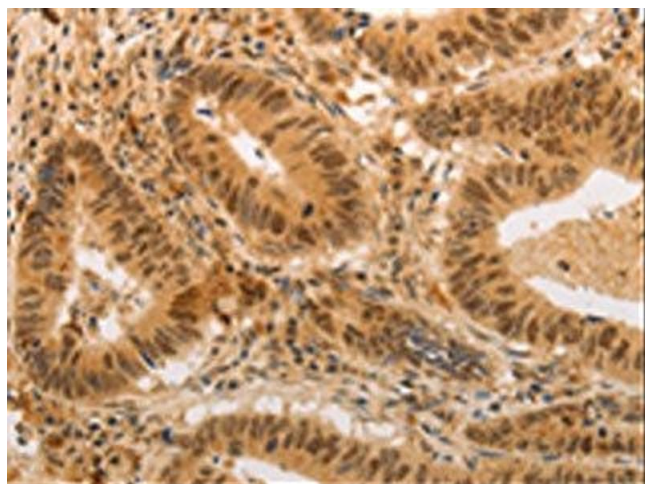
Buffer: -20 °C, pH 7.4 PBS, 0.05 % Sodium azide, 40 % Glycerol

Preservative: Sodium azide

Precaution of Use: This product contains Sodium azide: a POISONOUS AND HAZARDOUS SUBSTANCE which should be handled by trained staff only.

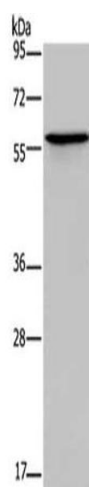
Storage: -20 °C,-80 °C

Storage Comment: Upon receipt, store at -20°C or -80°C. Avoid repeated freeze.



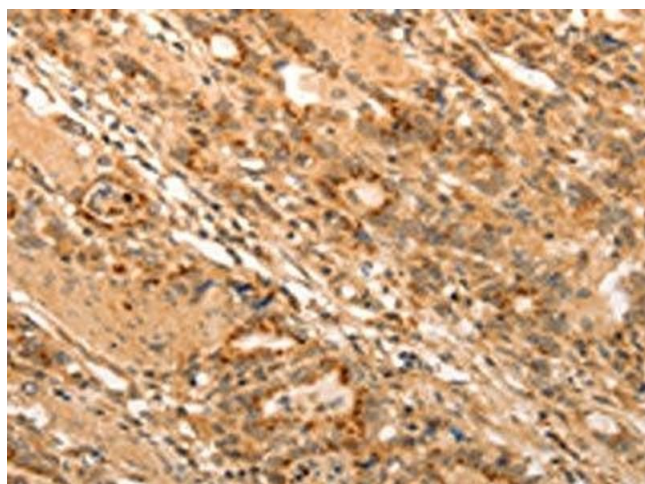
Immunohistochemistry

Image 1. The image on the left is immunohistochemistry of paraffin-embedded Human colon cancer tissue using ABIN7189699(ADRA1B Antibody) at dilution 1/20, on the right is treated with synthetic peptide. (Original magnification: x200)



Western Blotting

Image 2. Gel: 10 % SDS-PAGE, Lysate: 40 µg, Lane: Human lung cancer tissue, Primary antibody: ABIN7189699(ADRA1B Antibody) at dilution 1/550, Secondary antibody: Goat anti rabbit IgG at 1/8000 dilution, Exposure time: 1 minute



Immunohistochemistry

Image 3. The image on the left is immunohistochemistry of paraffin-embedded Human gastric cancer tissue using ABIN7189699(ADRA1B Antibody) at dilution 1/20, on the right is treated with synthetic peptide. (Original magnification: x200)