

Datasheet for ABIN7189710

anti-AFF2 antibody**3** Images[Go to Product page](#)

Overview

Quantity:	100 µL
Target:	AFF2
Reactivity:	Human
Host:	Rabbit
Clonality:	Polyclonal
Conjugate:	This AFF2 antibody is un-conjugated
Application:	Western Blotting (WB), ELISA, Immunohistochemistry (IHC)

Product Details

Immunogen:	Synthetic peptide of Human AFF2
Isotype:	IgG
Cross-Reactivity:	Human, Mouse
Purification:	Antigen affinity purification

Target Details

Target:	AFF2
Alternative Name:	AFF2 (AFF2 Products)
Background:	Background: This gene encodes a putative transcriptional activator that is a member of the AF4\FMR2 gene family. This gene is associated with the folate-sensitive fragile X E locus on chromosome X. A repeat polymorphism in the fragile X E locus results in silencing of this gene causing Fragile X E syndrome. Fragile X E syndrome is a form of nonsyndromic X-linked mental

Target Details

retardation. Alternate splicing results in multiple transcript variants.

Aliases: AF4/FMR2 family member 2 antibody, AF4/FMR2 family, member 2 antibody, AFF2 antibody, AFF2_HUMAN antibody, FMR2 antibody, FMR2P antibody, Fragile X E mental retardation syndrome protein antibody, fragile X mental retardation 2 antibody, Fragile X mental retardation 2 protein antibody, fragile X mental retardation gene associated with FRAXE antibody, FRAXE antibody, mild or borderline mental retardation antibody, MRX2 antibody, OTTHUMP00000024204 antibody, OX19 antibody, Protein FMR-2 antibody, Protein Ox19 antibody

UniProt: [P51816](#)

Application Details

Application Notes: ELISA:1:1000-1:2000, WB:1:200-1:1000, IHC:1:25-1:100,

Restrictions: For Research Use only

Handling

Format: Liquid

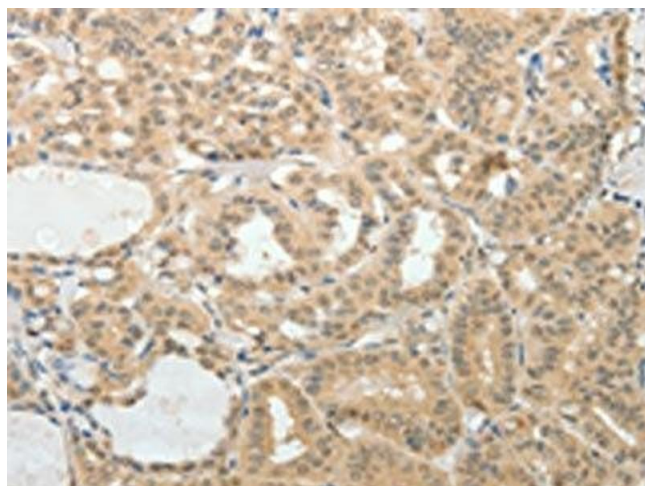
Buffer: -20 °C, pH 7.4 PBS, 0.05 % Sodium azide, 40 % Glycerol

Preservative: Sodium azide

Precaution of Use: This product contains Sodium azide: a POISONOUS AND HAZARDOUS SUBSTANCE which should be handled by trained staff only.

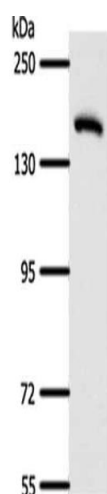
Storage: -20 °C, -80 °C

Storage Comment: Upon receipt, store at -20°C or -80°C. Avoid repeated freeze.



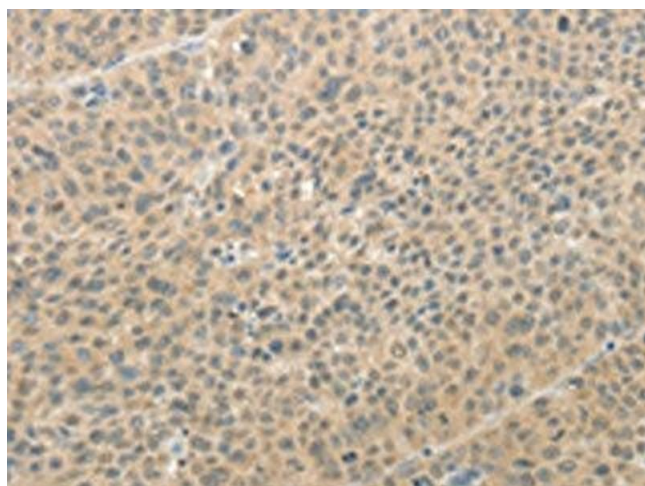
Immunohistochemistry

Image 1. The image on the left is immunohistochemistry of paraffin-embedded Human thyroid cancer tissue using ABIN7189710(AFF2 Antibody) at dilution 1/25, on the right is treated with synthetic peptide. (Original magnification: x200)



Western Blotting

Image 2. Gel: 8 % SDS-PAGE, Lysate: 40 µg, Lane: Human fetal lung tissue, Primary antibody: ABIN7189710(AFF2 Antibody) at dilution 1/400, Secondary antibody: Goat anti rabbit IgG at 1/8000 dilution, Exposure time: 1 minute



Immunohistochemistry

Image 3. The image on the left is immunohistochemistry of paraffin-embedded Human liver cancer tissue using ABIN7189710(AFF2 Antibody) at dilution 1/25, on the right is treated with synthetic peptide. (Original magnification: x200)