

Datasheet for ABIN7189711

anti-AGAP1 antibody

3 Images

[Go to Product page](#)

Overview

Quantity:	100 µL
Target:	AGAP1
Reactivity:	Human
Host:	Rabbit
Clonality:	Polyclonal
Conjugate:	This AGAP1 antibody is un-conjugated
Application:	Western Blotting (WB), ELISA, Immunohistochemistry (IHC)

Product Details

Immunogen:	Synthetic peptide of Human AGAP1
Isotype:	IgG
Cross-Reactivity:	Human, Mouse
Purification:	Antigen affinity purification

Target Details

Target:	AGAP1
Alternative Name:	AGAP1 (AGAP1 Products)
Background:	Background: This gene encodes a member of an ADP-ribosylation factor GTPase-activating protein family involved in membrane trafficking and cytoskeleton dynamics. This gene functions as a direct regulator of the adaptor-related protein complex 3 on endosomes. Multiple transcript variants encoding different isoforms have been found for this gene. GTPase-

Target Details

activating protein for ARF1 and, to a lesser extent, ARF5. Directly and specifically regulates the adapter protein 3 (AP-3)-dependent trafficking of proteins in the endosomal-lysosomal system. Aliases: AGAP 1 antibody, AGAP-1 antibody, Agap1 antibody, AGAP1_HUMAN antibody, Arf GAP with GTP binding proteinlike ANK repeat and PH domains 1 antibody, Arf-GAP with GTPase, ANK repeat and PH domain-containing protein 1 antibody, ArfGAP with GTPase domain ankyrin repeat and PH domain 1 antibody, Centaurin gamma 2 antibody, Centaurin-gamma-2 antibody, CENTG2 antibody, Cnt-g2 antibody, GGAP 1 antibody, GGAP1 antibody, GTP binding and GTPase activating protein 1 antibody, GTP-binding and GTPase-activating protein 1 antibody, KIAA1099 antibody, MGC71657 antibody

UniProt: [Q9UPQ3](#)

Application Details

Application Notes: ELISA:1:2000-1:5000, WB:1:500-1:2000, IHC:1:25-1:100,

Restrictions: For Research Use only

Handling

Format: Liquid

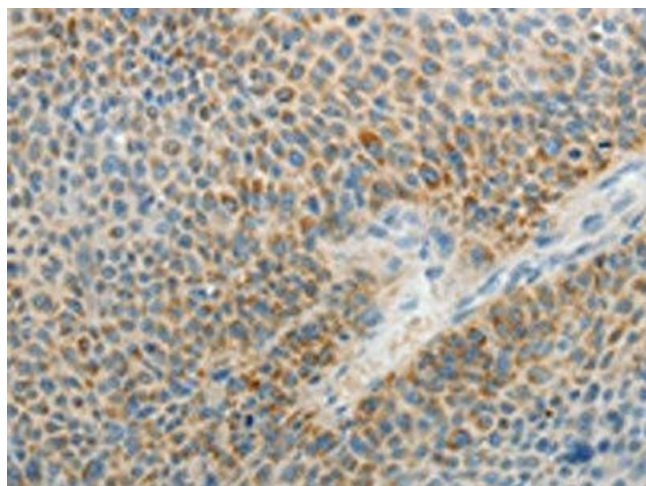
Buffer: -20 °C, pH 7.4 PBS, 0.05 % Sodium azide, 40 % Glycerol

Preservative: Sodium azide

Precaution of Use: This product contains Sodium azide: a POISONOUS AND HAZARDOUS SUBSTANCE which should be handled by trained staff only.

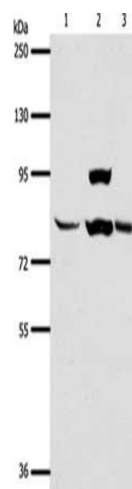
Storage: -20 °C,-80 °C

Storage Comment: Upon receipt, store at -20°C or -80°C. Avoid repeated freeze.



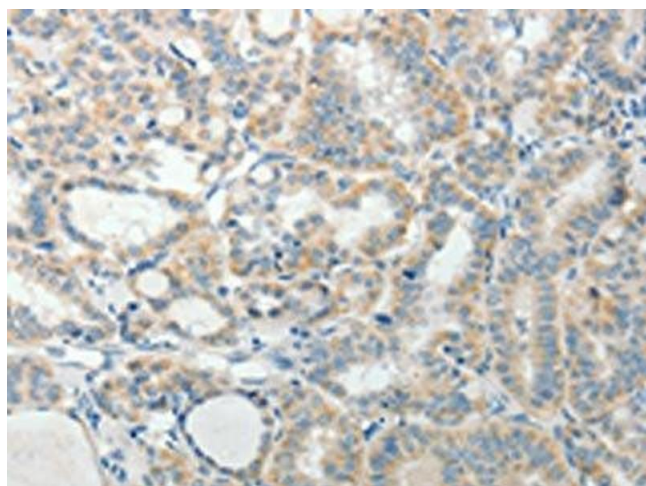
Immunohistochemistry

Image 1. The image on the left is immunohistochemistry of paraffin-embedded Human liver cancer tissue using ABIN7189711(AGAP1 Antibody) at dilution 1/25, on the right is treated with synthetic peptide. (Original magnification: x200)



Western Blotting

Image 2. Gel: 8 % SDS-PAGE, Lysate: 40 µg, Lane 1-3: Human liver cancer tissue, heLa cells, mouse lung tissue, Primary antibody: ABIN7189711(AGAP1 Antibody) at dilution 1/400, Secondary antibody: Goat anti rabbit IgG at 1/8000 dilution, Exposure time: 1 minute



Immunohistochemistry

Image 3. The image on the left is immunohistochemistry of paraffin-embedded Human thyroid cancer tissue using ABIN7189711(AGAP1 Antibody) at dilution 1/25, on the right is treated with synthetic peptide. (Original magnification: x200)