



[Go to Product page](#)

Datasheet for ABIN7189752

## anti-AKAP6 antibody

### 1 Image

#### Overview

Quantity:	100 µL
Target:	AKAP6 (Akap6)
Reactivity:	Human
Host:	Rabbit
Clonality:	Polyclonal
Conjugate:	This AKAP6 antibody is un-conjugated
Application:	ELISA, Immunohistochemistry (IHC)

#### Product Details

Immunogen:	Synthetic peptide of Human AKAP6
Isotype:	IgG
Cross-Reactivity:	Human
Purification:	Antigen affinity purification

#### Target Details

Target:	AKAP6 (Akap6)
Alternative Name:	AKAP6 ( <a href="#">Akap6 Products</a> )
Background:	Background: The A-kinase anchor proteins (AKAPs) are a group of structurally diverse proteins, which have the common function of binding to the regulatory subunit of protein kinase A (PKA) and confining the holoenzyme to discrete locations within the cell. This gene encodes a member of the AKAP family. The encoded protein is highly expressed in various brain regions

## Target Details

---

and cardiac and skeletal muscle. It is specifically localized to the sarcoplasmic reticulum and nuclear membrane, and is involved in anchoring PKA to the nuclear membrane or sarcoplasmic reticulum.

Aliases: AKAP6 antibody, AKAP100 antibody, KIAA0311A-kinase anchor protein 6 antibody, AKAP-6 antibody, A-kinase anchor protein 100 kDa antibody, AKAP 100 antibody, Protein kinase A-anchoring protein 6 antibody, PRKA6 antibody, mAKAP antibody

---

UniProt: [Q13023](#)

---

Pathways: [cAMP Metabolic Process](#), [Regulation of Muscle Cell Differentiation](#)

## Application Details

---

---

Application Notes: ELISA:1:3000-1:10000, IHC:1:50-1:200,

---

Restrictions: For Research Use only

## Handling

---

---

Format: Liquid

---

Buffer: -20 °C, pH 7.4 PBS, 0.05 % Sodium azide, 40 % Glycerol

---

Preservative: Sodium azide

---

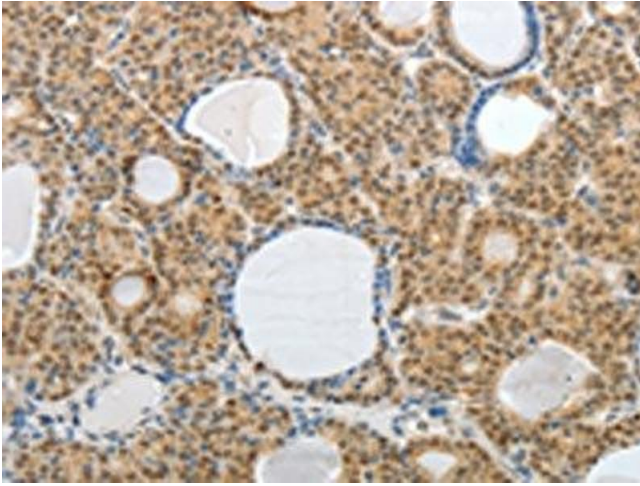
Precaution of Use: This product contains Sodium azide: a POISONOUS AND HAZARDOUS SUBSTANCE which should be handled by trained staff only.

---

Storage: -20 °C, -80 °C

---

Storage Comment: Upon receipt, store at -20°C or -80°C. Avoid repeated freeze.



### Immunohistochemistry

**Image 1.** The image on the left is immunohistochemistry of paraffin-embedded Human thyroid cancer tissue using ABIN7189752(AKAP6 Antibody) at dilution 1/30, on the right is treated with synthetic peptide. (Original magnification: x200)