



[Go to Product page](#)

Datasheet for ABIN7189783
anti-ALPPL2 antibody

2 Images

Overview

Quantity:	100 µL
Target:	ALPPL2
Reactivity:	Human
Host:	Rabbit
Clonality:	Polyclonal
Conjugate:	This ALPPL2 antibody is un-conjugated
Application:	Immunohistochemistry (IHC), ELISA

Product Details

Immunogen:	Synthetic peptide of Human ALPPL2
Isotype:	IgG
Cross-Reactivity:	Human
Purification:	Antigen affinity purification

Target Details

Target:	ALPPL2
Alternative Name:	ALPPL2 (ALPPL2 Products)
Background:	Background: There are at least four distinct but related alkaline phosphatases: intestinal, placental, placental-like, and liver/bone/kidney (tissue non-specific). The product of this gene is a membrane bound glycosylated enzyme, localized to testis, thymus and certain germ cell tumors, that is closely related to both the placental and intestinal forms of alkaline

Target Details

phosphatase.

Aliases: Akp5 antibody, Alkaline phosphatase antibody, Alkaline phosphatase Nagao isozyme antibody, Alkaline phosphatase placental like antibody, ALP 1 antibody, ALP-1 antibody, ALP1 antibody, ALPG antibody, ALPPL 2 antibody, ALPPL antibody, ALPPL2 antibody, C77216 antibody, D1Ert816e antibody, GCAP antibody, Germ cell alkaline phosphatase antibody, Nagao isozyme antibody, Placental alkaline phosphatase-like antibody, Placental like alkaline phosphatase antibody, placental-like antibody, PLAP like antibody, PLAP-like antibody, PPBN_HUMAN antibody, Testicular and thymus alkaline phosphatase antibody

UniProt: [P10696](#)

Application Details

Application Notes: ELISA:1:2000-1:5000, IHC:1:25-1:100,

Restrictions: For Research Use only

Handling

Format: Liquid

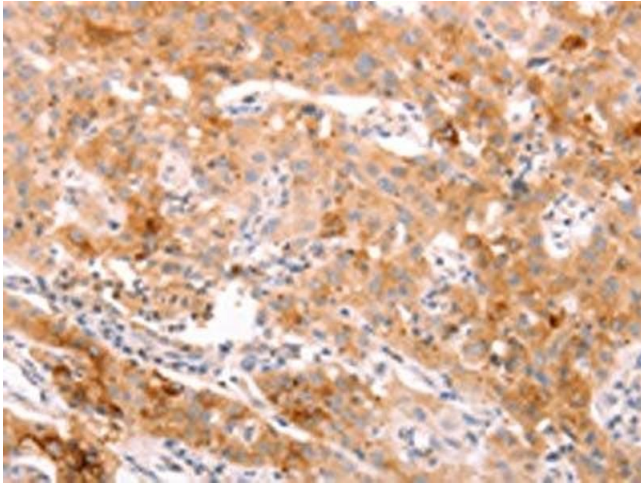
Buffer: -20 °C, pH 7.4 PBS, 0.05 % Sodium azide, 40 % Glycerol

Preservative: Sodium azide

Precaution of Use: This product contains Sodium azide: a POISONOUS AND HAZARDOUS SUBSTANCE which should be handled by trained staff only.

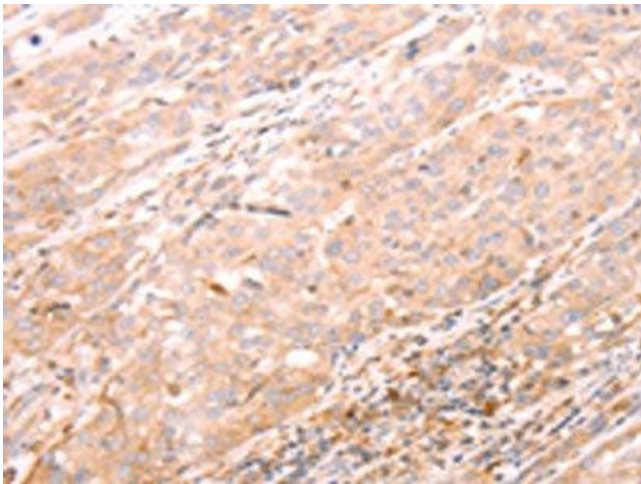
Storage: -20 °C,-80 °C

Storage Comment: Upon receipt, store at -20°C or -80°C. Avoid repeated freeze.



Immunohistochemistry

Image 1. The image on the left is immunohistochemistry of paraffin-embedded Human lung cancer tissue using ABIN7189783(ALPPL2 Antibody) at dilution 1/20, on the right is treated with synthetic peptide. (Original magnification: x200)



Immunohistochemistry

Image 2. The image on the left is immunohistochemistry of paraffin-embedded Human esophagus cancer tissue using ABIN7189783(ALPPL2 Antibody) at dilution 1/20, on the right is treated with synthetic peptide. (Original magnification: x200)