

Datasheet for ABIN7189804  
**anti-ANGPTL5 antibody**[Go to Product page](#)

## 2 Images

## Overview

Quantity:	100 µL
Target:	ANGPTL5
Reactivity:	Human
Host:	Rabbit
Clonality:	Polyclonal
Conjugate:	This ANGPTL5 antibody is un-conjugated
Application:	ELISA, Immunohistochemistry (IHC)

## Product Details

Immunogen:	Synthetic peptide of Human ANGPTL5
Isotype:	IgG
Cross-Reactivity:	Human
Purification:	Antigen affinity purification

## Target Details

Target:	ANGPTL5
Alternative Name:	ANGPTL5 ( <a href="#">ANGPTL5 Products</a> )
Background:	Background: Angptl5 (angiopoietin-like 5) is a 388 amino acid secreted protein that contains one fibrinogen C-terminal domain and is primarily expressed in adult heart tissue. The gene encoding Angptl5 maps to human chromosome 11. With approximately 135 million base pairs and 1,400 genes, chromosome 11 comprises approximately 4 % of human genomic DNA and is

## Target Details

considered a gene and disease association dense chromosome. The chromosome 11 encoded Atm gene is important for regulation of cell cycle arrest and apoptosis following double strand DNA breaks. Atm mutation leads to the disorder known as ataxia-telangiectasia.

Aliases: Angiopoietin like 5 antibody, Angiopoietin related protein 5 antibody, Angiopoietin-like protein 5 antibody, Angiopoietin-related protein 5 antibody, ANGL5\_HUMAN antibody, ANGPTL 5 antibody, ANGPTL5 antibody, Fibrinogen like antibody

UniProt: [Q86XS5](#)

## Application Details

Application Notes: ELISA:1:2000-1:5000, IHC:1:20-1:100,

Restrictions: For Research Use only

## Handling

Format: Liquid

Buffer: -20 °C, pH 7.4 PBS, 0.05 % Sodium azide, 40 % Glycerol

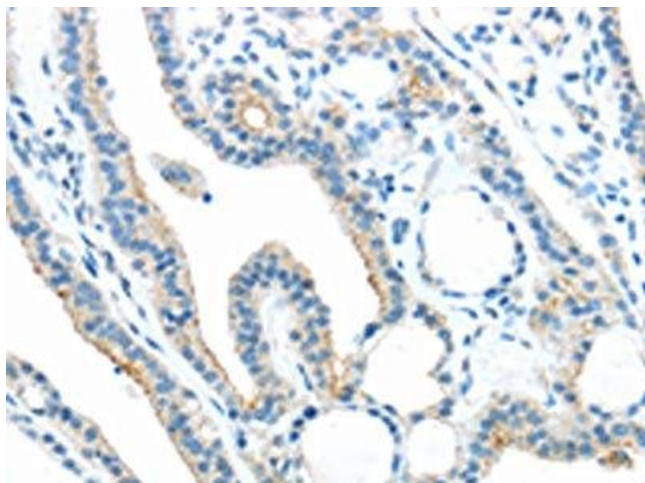
Preservative: Sodium azide

Precaution of Use: This product contains Sodium azide: a POISONOUS AND HAZARDOUS SUBSTANCE which should be handled by trained staff only.

Storage: -20 °C,-80 °C

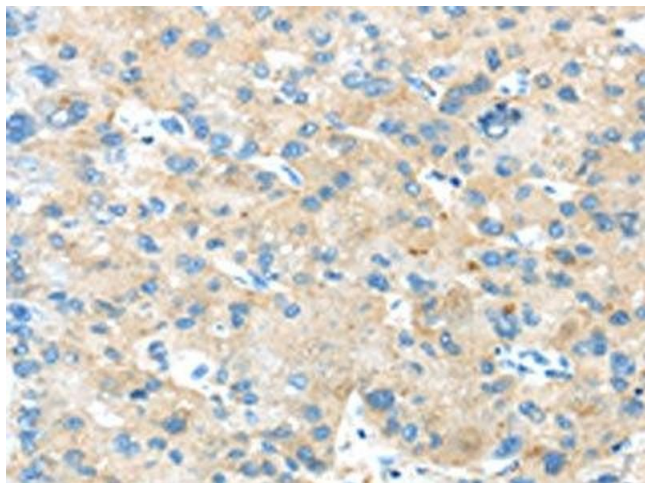
Storage Comment: Upon receipt, store at -20°C or -80°C. Avoid repeated freeze.

## Images



### Immunohistochemistry

**Image 1.** The image on the left is immunohistochemistry of paraffin-embedded Human thyroid cancer tissue using ABIN7189804(ANGPTL5 Antibody) at dilution 1/25, on the right is treated with synthetic peptide. (Original magnification: x200)



#### Immunohistochemistry

**Image 2.** The image on the left is immunohistochemistry of paraffin-embedded Human liver cancer tissue using ABIN7189804(ANGPTL5 Antibody) at dilution 1/25, on the right is treated with synthetic peptide. (Original magnification: x200)