



Datasheet for ABIN7189809
anti-ANKRD28 antibody



[Go to Product page](#)

1 Image

Overview

Quantity:	100 µL
Target:	ANKRD28
Reactivity:	Human
Host:	Rabbit
Clonality:	Polyclonal
Conjugate:	This ANKRD28 antibody is un-conjugated
Application:	Western Blotting (WB), ELISA

Product Details

Immunogen:	Synthetic peptide of Human ANKRD28
Isotype:	IgG
Cross-Reactivity:	Human, Mouse
Purification:	Antigen affinity purification

Target Details

Target:	ANKRD28
Alternative Name:	ANKRD28 (ANKRD28 Products)
Background:	Background: Putative regulatory subunit of protein phosphatase 6 (PP6) that may be involved in the recognition of phosphoprotein substrates. Involved in the PP6-mediated dephosphorylation of NFKBIE opposing its degradation in response to TNF-alpha. Selectively inhibits the phosphatase activity of PPP1C. Targets PPP1C to modulate HNRPK phosphorylation.

Target Details

ANKRD28 selectively regulated phosphorylation of hnRNP-K at ser284, an effect that was enhanced in vivo by an S1013A/S1017A double mutant, suggesting that ANKRD28 targets PP1 in a regulated manner to dephosphorylate hnRNP-K selectively at ser284.

Aliases: ANKRD28 antibody, KIAA0379Serine/threonine-protein phosphatase 6 regulatory ankyrin repeat subunit A antibody, PP6-ARS-A antibody, Serine/threonine-protein phosphatase 6 regulatory subunit ARS-A antibody, Ankyrin repeat domain-containing protein 28 antibody, Phosphatase interactor targeting protein hnRNP K antibody, PITK antibody

UniProt: [O15084](#)

Application Details

Application Notes: ELISA:1:1000-1:2000, WB:1:200-1:1000,

Restrictions: For Research Use only

Handling

Format: Liquid

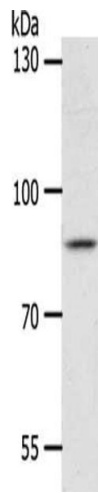
Buffer: -20 °C, pH 7.4 PBS, 0.05 % Sodium azide, 40 % Glycerol

Preservative: Sodium azide

Precaution of Use: This product contains Sodium azide: a POISONOUS AND HAZARDOUS SUBSTANCE which should be handled by trained staff only.

Storage: -20 °C,-80 °C

Storage Comment: Upon receipt, store at -20°C or -80°C. Avoid repeated freeze.



Western Blotting

Image 1. Gel: 8 % SDS-PAGE, Lysate: 40 µg, Lane: HeLa cells, Primary antibody: ABIN7189809(ANKRD28 Antibody) at dilution 1/1050, Secondary antibody: Goat anti rabbit IgG at 1/8000 dilution, Exposure time: 2 hours