

Datasheet for ABIN7189815

**anti-ANP32E antibody****3** Images[Go to Product page](#)

## Overview

Quantity:	100 µL
Target:	ANP32E
Reactivity:	Human
Host:	Rabbit
Clonality:	Polyclonal
Conjugate:	This ANP32E antibody is un-conjugated
Application:	Western Blotting (WB), Immunohistochemistry (IHC), ELISA

## Product Details

Immunogen:	Synthetic peptide of Human ANP32E
Isotype:	IgG
Cross-Reactivity:	Human, Mouse, Rat
Purification:	Antigen affinity purification

## Target Details

Target:	ANP32E
Alternative Name:	ANP32E ( <a href="#">ANP32E Products</a> )
Background:	Background: The Anp32 family consists of 32 evolutionarily-conserved proteins and is included within the superfamily of leucine-rich repeat (LRR) proteins. Leucine-rich acidic nuclear protein-like (LANPL), also called ANP32E or Cpd1, is a member of the Anp32 family. LANPL is located in the cytoplasm of peripheral blood leukocytes, colon, small intestine, prostate, thymus, spleen,

## Target Details

skeletal muscle, liver and kidney. It has also been detected in the nucleus, cytoplasm and membrane of multiple brain regions. Upon phosphorylation, LANPL colocalizes and inhibits protein phosphatase 2A (PP2A), but does not inhibit PP1. LANPL modulates cell signalling and transduction of gene expression to regulate the morphology and dynamics of the cytoskeleton, cell adhesion, neural development and cerebellar morphogenesis.

Aliases: Acidic (leucine rich) nuclear phosphoprotein 32 family member E antibody, Acidic leucine-rich nuclear phosphoprotein 32 family member E antibody, AN32E\_HUMAN antibody, anp32e antibody, Cerebellar postnatal development protein 1 antibody, LANP like protein antibody, LANP-L antibody, LANP-like protein antibody, LANPL antibody, Leucine rich acidic nuclear protein like antibody, MGC5350 antibody

UniProt: [Q9BTT0](#)

## Application Details

Application Notes: ELISA:1:2000-1:5000, WB:1:500-1:2000, IHC:1:50-1:200,

Restrictions: For Research Use only

## Handling

Format: Liquid

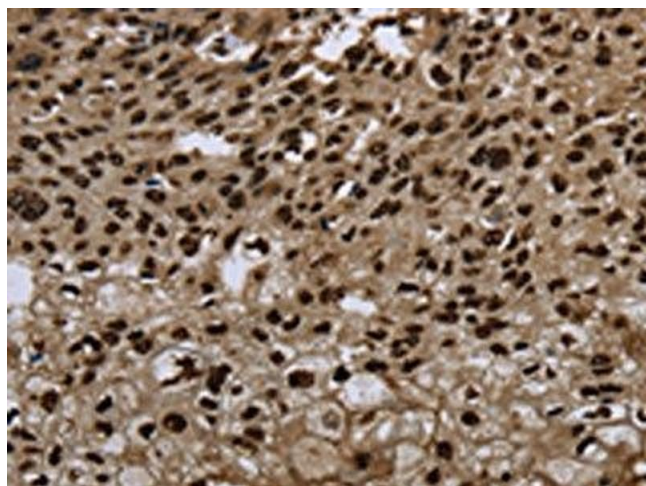
Buffer: -20 °C, pH 7.4 PBS, 0.05 % Sodium azide, 40 % Glycerol

Preservative: Sodium azide

Precaution of Use: This product contains Sodium azide: a POISONOUS AND HAZARDOUS SUBSTANCE which should be handled by trained staff only.

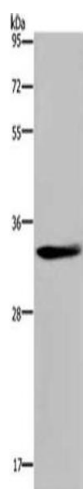
Storage: -20 °C, -80 °C

Storage Comment: Upon receipt, store at -20°C or -80°C. Avoid repeated freeze.



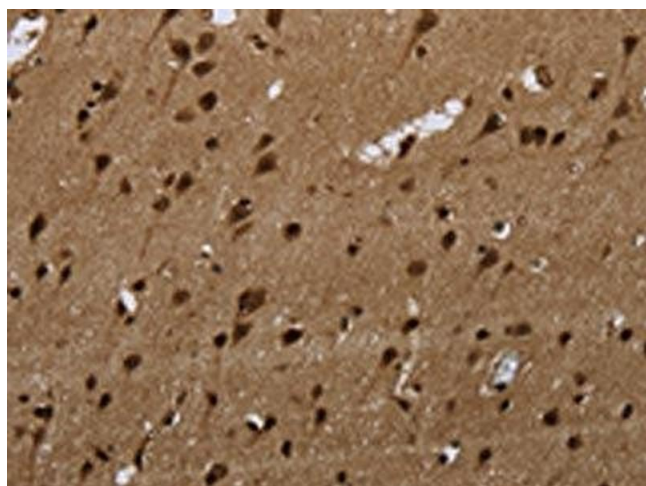
#### Immunohistochemistry

**Image 1.** The image on the left is immunohistochemistry of paraffin-embedded Human esophagus cancer tissue using ABIN7189815(ANP32E Antibody) at dilution 1/20, on the right is treated with synthetic peptide. (Original magnification: x200)



#### Western Blotting

**Image 2.** Gel: 10 % SDS-PAGE, Lysate: 40 µg, Lane: Mouse thymus tissue, Primary antibody: ABIN7189815(ANP32E Antibody) at dilution 1/300, Secondary antibody: Goat anti rabbit IgG at 1/8000 dilution, Exposure time: 20 seconds



#### Immunohistochemistry

**Image 3.** The image on the left is immunohistochemistry of paraffin-embedded Human brain tissue using ABIN7189815(ANP32E Antibody) at dilution 1/20, on the right is treated with synthetic peptide. (Original magnification: x200)