



[Go to Product page](#)

Datasheet for ABIN7189845
anti-APOA1BP antibody

2 Images

Overview

Quantity:	100 µL
Target:	APOA1BP
Reactivity:	Human
Host:	Rabbit
Clonality:	Polyclonal
Conjugate:	This APOA1BP antibody is un-conjugated
Application:	Immunohistochemistry (IHC), ELISA

Product Details

Immunogen:	Synthetic peptide of Human APOA1BP
Isotype:	IgG
Cross-Reactivity:	Human, Mouse, Rat
Purification:	Antigen affinity purification

Target Details

Target:	APOA1BP
Alternative Name:	NAXE (APOA1BP Products)
Background:	Background: The product of this gene interacts with apolipoprotein A-I (apoA-I), the major apolipoprotein of high-density lipoproteins (HDLs). It is secreted into some bodily fluids, and its synthesis and secretion are stimulated in vitro by incubating cells with apoA-I. The human genome contains related pseudogenes.

Target Details

Aliases: NAXE antibody, AIBP antibody, APOA1BP antibody, YJEFN1 antibody, NAD(P)H-hydrate epimerase antibody, EC 5.1.99.6 antibody, Apolipoprotein A-I-binding protein antibody, AI-BP antibody, NAD(P)HX epimerase antibody, YjeF N-terminal domain-containing protein 1 antibody, YjeF_N1 antibody

UniProt: [Q8NCW5](#)

Application Details

Application Notes: ELISA:1:1000-1:2000, IHC:1:15-1:50,

Restrictions: For Research Use only

Handling

Format: Liquid

Buffer: -20 °C, pH 7.4 PBS, 0.05 % Sodium azide, 40 % Glycerol

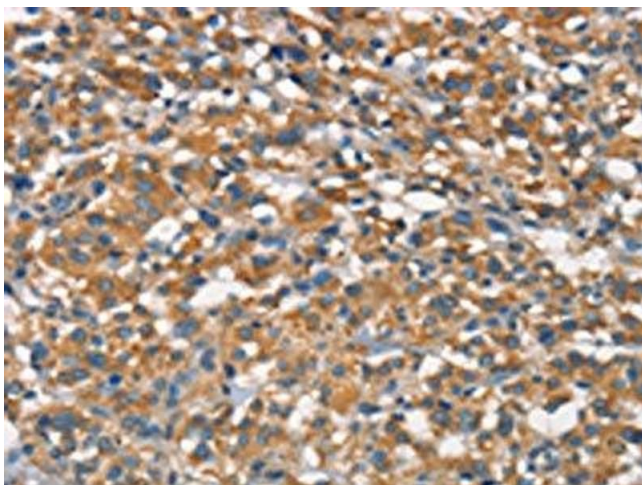
Preservative: Sodium azide

Precaution of Use: This product contains Sodium azide: a POISONOUS AND HAZARDOUS SUBSTANCE which should be handled by trained staff only.

Storage: -20 °C, -80 °C

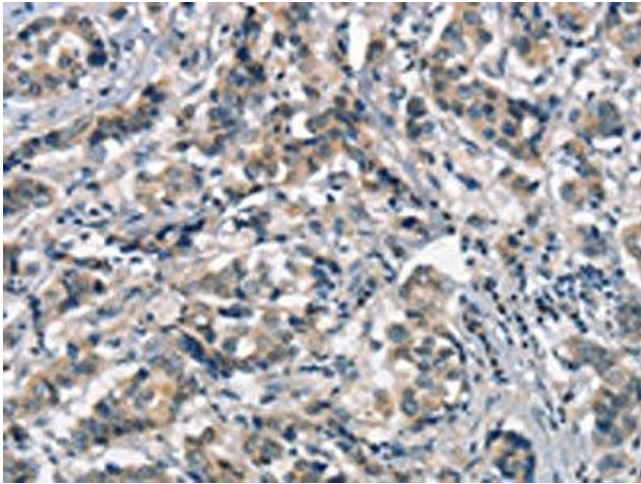
Storage Comment: Upon receipt, store at -20°C or -80°C. Avoid repeated freeze.

Images



Immunohistochemistry

Image 1. The image on the left is immunohistochemistry of paraffin-embedded Human thyroid cancer tissue using ABIN7189845(APOA1BP Antibody) at dilution 1/15, on the right is treated with synthetic peptide. (Original magnification: x200)



Immunohistochemistry

Image 2. The image on the left is immunohistochemistry of paraffin-embedded Human breast cancer tissue using ABIN7189845(APOA1BP Antibody) at dilution 1/15, on the right is treated with synthetic peptide. (Original magnification: x200)