



[Go to Product page](#)

Datasheet for ABIN7189855

anti-APOC4 antibody

2 Images

Overview

Quantity:	100 µL
Target:	APOC4
Reactivity:	Human
Host:	Rabbit
Clonality:	Polyclonal
Conjugate:	This APOC4 antibody is un-conjugated
Application:	ELISA, Immunohistochemistry (IHC)

Product Details

Immunogen:	Synthetic peptide of Human APOC4
Isotype:	IgG
Cross-Reactivity:	Human
Purification:	Antigen affinity purification

Target Details

Target:	APOC4
Alternative Name:	APOC4 (APOC4 Products)
Background:	Background: This gene encodes a lipid-binding protein belonging to the apolipoprotein gene family. The protein is thought to play a role in lipid metabolism. Polymorphisms in this gene may influence circulating lipid levels and may be associated with coronary artery disease risk. This gene is present in a cluster with other related apolipoprotein genes on chromosome 19.

Target Details

Naturally occurring read-through transcription exists between this gene and the neighboring downstream apolipoprotein C-II (APOC2) gene.

Aliases: APO C4 antibody, Apo CIV antibody, Apo-CIV antibody, APOC 4 antibody, ApoC IV antibody, ApoC-IV antibody, APOC4 antibody, APOC4_HUMAN antibody, Apolipoprotein C IV antibody, Apolipoprotein C-IV antibody, Apolipoprotein C4 antibody

UniProt: [P55056](#)

Pathways: [Lipid Metabolism](#)

Application Details

Application Notes: ELISA:1:1000-1:2000, IHC:1:25-1:100,

Restrictions: For Research Use only

Handling

Format: Liquid

Buffer: -20 °C, pH 7.4 PBS, 0.05 % Sodium azide, 40 % Glycerol

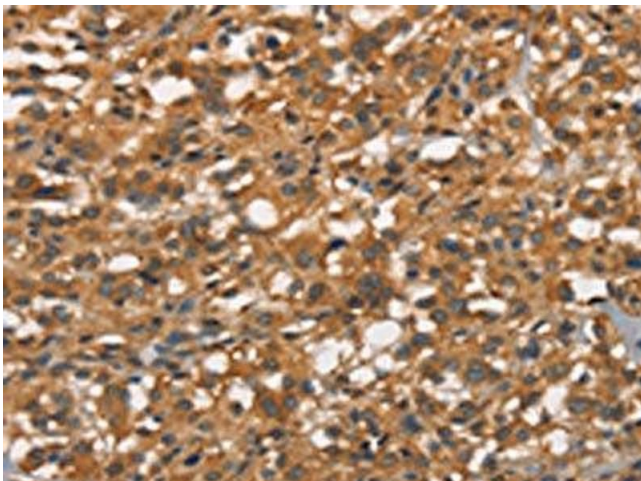
Preservative: Sodium azide

Precaution of Use: This product contains Sodium azide: a POISONOUS AND HAZARDOUS SUBSTANCE which should be handled by trained staff only.

Storage: -20 °C,-80 °C

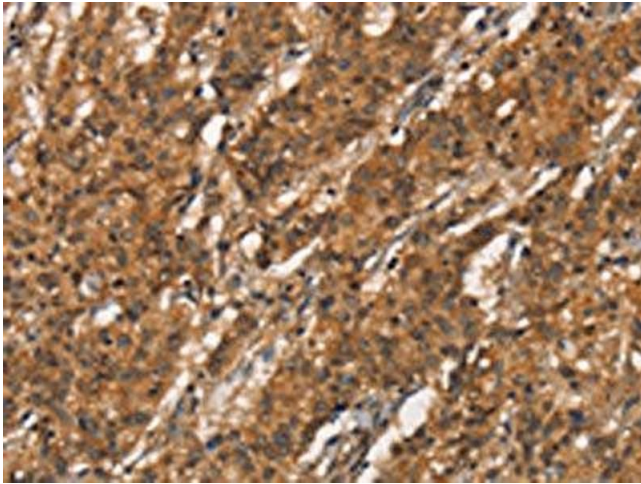
Storage Comment: Upon receipt, store at -20°C or -80°C. Avoid repeated freeze.

Images



Immunohistochemistry

Image 1. The image on the left is immunohistochemistry of paraffin-embedded Human thyroid cancer tissue using ABIN7189855 (APOC4 Antibody) at dilution 1/20, on the right is treated with synthetic peptide. (Original magnification: x200)



Immunohistochemistry

Image 2. The image on the left is immunohistochemistry of paraffin-embedded Human gastric cancer tissue using ABIN7189855(APOC4 Antibody) at dilution 1/20, on the right is treated with synthetic peptide. (Original magnification: x200)