

Datasheet for ABIN7189890
anti-ARHGAP4 antibody[Go to Product page](#)

2 Images

Overview

Quantity:	100 µL
Target:	ARHGAP4
Reactivity:	Human
Host:	Rabbit
Clonality:	Polyclonal
Conjugate:	This ARHGAP4 antibody is un-conjugated
Application:	ELISA, Immunohistochemistry (IHC)

Product Details

Immunogen:	Synthetic peptide of Human ARHGAP4
Isotype:	IgG
Cross-Reactivity:	Human
Purification:	Antigen affinity purification

Target Details

Target:	ARHGAP4
Alternative Name:	ARHGAP4 (ARHGAP4 Products)
Background:	Background: This gene encodes a member of the rhoGAP family of proteins which play a role in the regulation of small GTP-binding proteins belonging to the RAS superfamily. The protein encoded by the orthologous gene in rat is localized to the Golgi complex and can redistribute to microtubules. The rat protein stimulates the activity of some Rho GTPases in vitro. Genomic

Target Details

deletions of this gene and a neighboring gene have been found in patients with nephrogenic diabetes insipidus. Multiple transcript variants encoding different isoforms have been found for this gene.

Aliases: ARHGAP4 antibody, KIAA0131 antibody, RGC1 antibody, RHOGAP4 antibody, Rho GTPase-activating protein 4 antibody, Rho-GAP hematopoietic protein C1 antibody, Rho-type GTPase-activating protein 4 antibody, p115 antibody

UniProt: [P98171](#)

Pathways: [Neurotrophin Signaling Pathway](#), [Regulation of Cell Size](#)

Application Details

Application Notes: ELISA:1:1000-1:2000, IHC:1:25-1:100,

Restrictions: For Research Use only

Handling

Format: Liquid

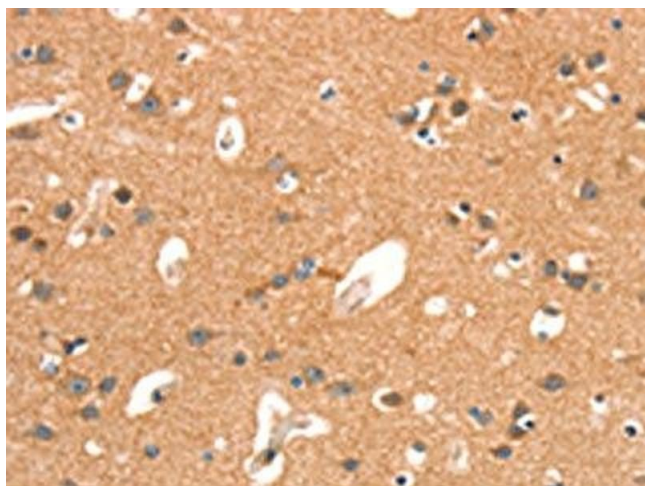
Buffer: -20 °C, pH 7.4 PBS, 0.05 % Sodium azide, 40 % Glycerol

Preservative: Sodium azide

Precaution of Use: This product contains Sodium azide: a POISONOUS AND HAZARDOUS SUBSTANCE which should be handled by trained staff only.

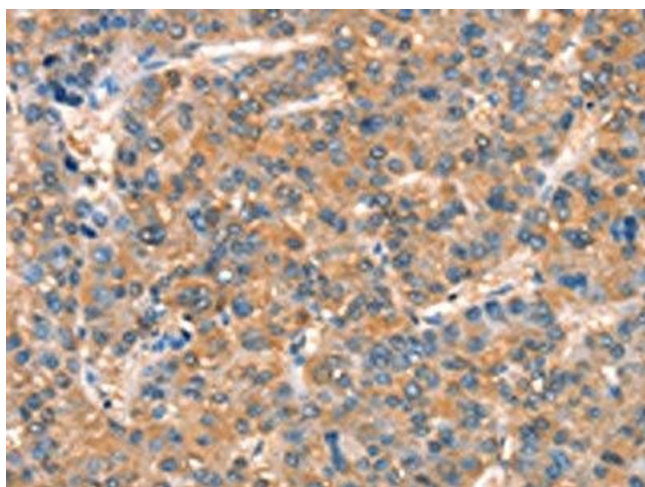
Storage: -20 °C, -80 °C

Storage Comment: Upon receipt, store at -20°C or -80°C. Avoid repeated freeze.



Immunohistochemistry

Image 1. The image on the left is immunohistochemistry of paraffin-embedded Human brain tissue using ABIN7189890(ARHGAP4 Antibody) at dilution 1/25, on the right is treated with synthetic peptide. (Original magnification: x200)



Immunohistochemistry

Image 2. The image on the left is immunohistochemistry of paraffin-embedded Human liver cancer tissue using ABIN7189890(ARHGAP4 Antibody) at dilution 1/25, on the right is treated with synthetic peptide. (Original magnification: x200)