

Datasheet for ABIN7189902

anti-ARL3 antibody[Go to Product page](#)**1** Image

Overview

Quantity:	100 µL
Target:	ARL3
Reactivity:	Human
Host:	Rabbit
Clonality:	Polyclonal
Conjugate:	This ARL3 antibody is un-conjugated
Application:	Western Blotting (WB), ELISA

Product Details

Immunogen:	Synthetic peptide of Human ARL3
Isotype:	IgG
Cross-Reactivity:	Human, Mouse, Rat
Purification:	Antigen affinity purification

Target Details

Target:	ARL3
Alternative Name:	ARL3 (ARL3 Products)
Background:	Background: ADP-ribosylation factor-like 3 is a member of the ADP-ribosylation factor family of GTP-binding proteins. ARL3 binds guanine nucleotides but lacks ADP-ribosylation factor activity. Small GTP-binding protein which cycles between an inactive GDP-bound and an active GTP-bound form, and the rate of cycling is regulated by guanine nucleotide exchange factors

Target Details

(GEF) and GTPase-activating proteins (GAP). Required for normal cytokinesis and cilia signaling. Requires assistance from GTPase-activating proteins (GAPs) like RP2 and PDE6D, in order to cycle between inactive GDP-bound and active GTP-bound forms.

Aliases: ADP ribosylation factor like 3 antibody, ADP-ribosylation factor-like protein 3 antibody, Arf like 3 antibody, Arf like protein 3 antibody, ARFL3 antibody, ARL3 antibody, ARL3_HUMAN antibody

UniProt: [P36405](#)

Application Details

Application Notes: ELISA:1:1000-1:2000, WB:1:200-1:1000,

Restrictions: For Research Use only

Handling

Format: Liquid

Buffer: -20 °C, pH 7.4 PBS, 0.05 % Sodium azide, 40 % Glycerol

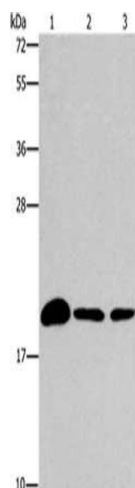
Preservative: Sodium azide

Precaution of Use: This product contains Sodium azide: a POISONOUS AND HAZARDOUS SUBSTANCE which should be handled by trained staff only.

Storage: -20 °C, -80 °C

Storage Comment: Upon receipt, store at -20°C or -80°C. Avoid repeated freeze.

Images



Western Blotting

Image 1. Gel: 15 % SDS-PAGE, Lysate: 40 µg, Lane 1-3: Mouse brain tissue, 231 cells, A375 cells, Primary antibody: ABIN7189902(ARL3 Antibody) at dilution 1/433, Secondary antibody: Goat anti rabbit IgG at 1/8000 dilution, Exposure time: 2 minutes