

Datasheet for ABIN718991

anti-CD236/GYPC antibody (AA 31-128)**2** Images[Go to Product page](#)

Overview

Quantity:	100 µL
Target:	CD236/GYPC (GYPC)
Binding Specificity:	AA 31-128
Reactivity:	Human
Host:	Rabbit
Clonality:	Polyclonal
Conjugate:	This CD236/GYPC antibody is un-conjugated
Application:	Western Blotting (WB), ELISA, Immunohistochemistry (Frozen Sections) (IHC (fro)), Immunofluorescence (Cultured Cells) (IF (cc)), Immunofluorescence (Paraffin-embedded Sections) (IF (p)), Immunocytochemistry (ICC), Immunohistochemistry (Paraffin-embedded Sections) (IHC (p))

Product Details

Immunogen:	KLH conjugated synthetic peptide derived from human Glycophorin C
Isotype:	IgG
Predicted Reactivity:	Human,Mouse,Rat
Purification:	Purified by Protein A.

Target Details

Target:	CD236/GYPC (GYPC)
Alternative Name:	Glycophorin C (GYPC Products)

Target Details

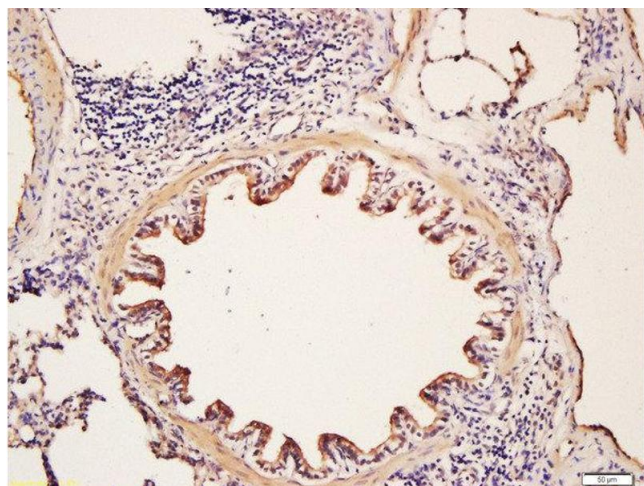
Target Type:	Viral Protein
Background:	<p>Synonyms: GE, GPC, GPD, GYPD, CD236, PAS-2, CD236R, PAS-2', Glycophorin-C, Glycoconnectin, Glycophorin-D, Glycoprotein beta, Sialoglycoprotein D, GYPC, GLPC</p> <p>Background: This protein is a minor sialoglycoprotein in human erythrocyte membranes. The blood group Gerbich antigens and receptors for Plasmodium falciparum merozoites are most likely located within the extracellular domain. Glycophorin-C plays an important role in regulating the stability of red cells.</p>
Gene ID:	2995
UniProt:	P04921

Application Details

Application Notes:	<p>WB 1:300-5000</p> <p>ELISA 1:500-1000</p> <p>IHC-P 1:200-400</p> <p>IHC-F 1:100-500</p> <p>IF(IHC-P) 1:50-200</p> <p>IF(IHC-F) 1:50-200</p> <p>IF(ICC) 1:50-200</p> <p>ICC 1:100-500</p>
Restrictions:	For Research Use only

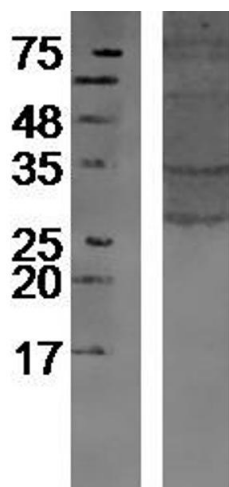
Handling

Format:	Liquid
Concentration:	1 µg/µL
Buffer:	0.01M TBS(pH 7.4) with 1 % BSA, 0.02 % Proclin300 and 50 % Glycerol.
Preservative:	ProClin
Precaution of Use:	This product contains ProClin: a POISONOUS AND HAZARDOUS SUBSTANCE, which should be handled by trained staff only.
Storage:	4 °C, -20 °C
Storage Comment:	Shipped at 4°C. Store at -20°C for one year. Avoid repeated freeze/thaw cycles.
Expiry Date:	12 months



Immunohistochemistry (Paraffin-embedded Sections)

Image 1. Formalin-fixed and paraffin embedded rat lung labeled with Rabbit Anti-Glycophorin C Polyclonal Antibody, Unconjugated (ABIN718991) at 1:200 followed by conjugation to the secondary antibody and DAB staining



Western Blotting

Image 2. Mouse bone lysates probed with Rabbit Anti-Glycophorin C Polyclonal Antibody, Unconjugated at 1:300 overnight at 4°C. Followed by a conjugated secondary antibody at 1:5000 for 90 min at 37°C