

Datasheet for ABIN7189934

**anti-ATP2A3 antibody**[Go to Product page](#)**1** Image

## Overview

Quantity:	100 µL
Target:	ATP2A3
Reactivity:	Human
Host:	Rabbit
Clonality:	Polyclonal
Conjugate:	This ATP2A3 antibody is un-conjugated
Application:	ELISA, Immunohistochemistry (IHC)

## Product Details

Immunogen:	Synthetic peptide of Human ATP2A3
Isotype:	IgG
Cross-Reactivity:	Human, Mouse, Rat
Purification:	Antigen affinity purification

## Target Details

Target:	ATP2A3
Alternative Name:	ATP2A3 ( <a href="#">ATP2A3 Products</a> )
Background:	Background: This gene encodes one of the SERCA Ca(2+)-ATPases, which are intracellular pumps located in the sarcoplasmic or endoplasmic reticula of muscle cells. This enzyme catalyzes the hydrolysis of ATP coupled with the translocation of calcium from the cytosol to the sarcoplasmic reticulum lumen, and is involved in calcium sequestration associated with

## Target Details

muscular excitation and contraction. Alternative splicing results in multiple transcript variants encoding different isoforms.

Aliases: Adenosine triphosphatase calcium antibody, AT2A3\_HUMAN antibody, Atp2a3 antibody, ATPase Ca(2+) transporting ubiquitous antibody, ATPase Ca++ transporting ubiquitous antibody, Calcium pump 3 antibody, Calcium translocating P type ATPase antibody, Sarco/endoplasmic reticulum Ca2+ ATPase antibody, Sarcoplasmic/endoplasmic reticulum calcium ATPase 3 antibody, SERCA 3 antibody, SERCA3 antibody, SERCA3b antibody, SR Ca(2+) ATPase 3 antibody, SR Ca(2+)-ATPase 3 antibody

UniProt: [Q93084](#)

Pathways: [Myometrial Relaxation and Contraction](#), [Ribonucleoside Biosynthetic Process](#)

## Application Details

Application Notes: ELISA:1:1000-1:2000, IHC:1:25-1:100,

Restrictions: For Research Use only

## Handling

Format: Liquid

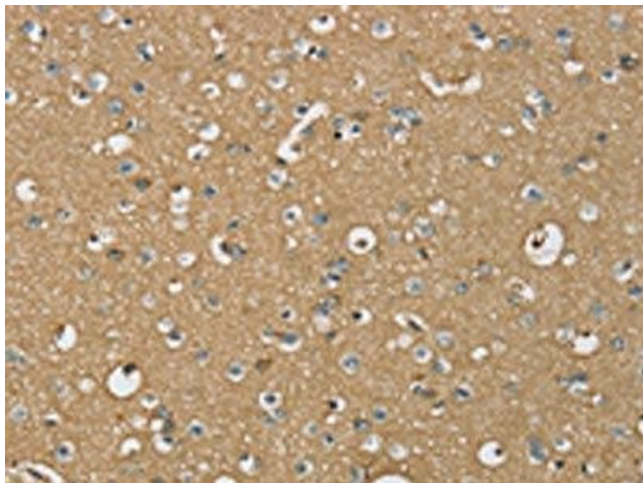
Buffer: -20 °C, pH 7.4 PBS, 0.05 % Sodium azide, 40 % Glycerol

Preservative: Sodium azide

Precaution of Use: This product contains Sodium azide: a POISONOUS AND HAZARDOUS SUBSTANCE which should be handled by trained staff only.

Storage: -20 °C, -80 °C

Storage Comment: Upon receipt, store at -20°C or -80°C. Avoid repeated freeze.



#### Immunohistochemistry

**Image 1.** The image on the left is immunohistochemistry of paraffin-embedded Human brain tissue using ABIN7189934(ATP2A3 Antibody) at dilution 1/30, on the right is treated with synthetic peptide. (Original magnification: x200)