



[Go to Product page](#)

Datasheet for ABIN7189936

anti-ATP7A antibody

3 Images

Overview

Quantity:	100 µL
Target:	ATP7A
Reactivity:	Human
Host:	Rabbit
Clonality:	Polyclonal
Conjugate:	This ATP7A antibody is un-conjugated
Application:	Immunohistochemistry (IHC), Western Blotting (WB), ELISA

Product Details

Immunogen:	Synthetic peptide of Human ATP7A
Isotype:	IgG
Cross-Reactivity:	Human, Mouse, Rat
Purification:	Antigen affinity purification

Target Details

Target:	ATP7A
Alternative Name:	ATP7A (ATP7A Products)
Background:	Background: This gene encodes a transmembrane protein that functions in copper transport across membranes. This protein is localized to the trans Golgi network, where it is predicted to supply copper to copper-dependent enzymes in the secretory pathway. It relocates to the plasma membrane under conditions of elevated extracellular copper, and functions in the efflux

Target Details

of copper from cells. Mutations in this gene are associated with Menkes disease, X-linked distal spinal muscular atrophy, and occipital horn syndrome. Alternatively-spliced transcript variants have been observed.

Aliases: ATP 7A antibody, ATP7A antibody, ATP7A_HUMAN antibody, ATPase copper transporting alpha polypeptide antibody, ATPase Cu⁺⁺ transporting alpha polypeptide (Menkes syndrome) antibody, ATPase Cu⁺⁺ transporting alpha polypeptide antibody, Copper pump 1 antibody, Copper transporting ATPase 1 antibody, Copper-transporting ATPase 1 antibody, Cu⁺⁺ transporting P type ATPase antibody, DSMAX antibody, FLJ17790 antibody, MC 1 antibody, MC1 antibody, Menkes disease associated protein antibody, Menkes disease-associated protein antibody, Menkes syndrome antibody, MK antibody, MNK antibody, OHS antibody, OTTHUMP00000062077 antibody, SMAX3 antibody

UniProt: [Q04656](#)

Pathways: [Transition Metal Ion Homeostasis](#), [Ribonucleoside Biosynthetic Process](#)

Application Details

Application Notes: ELISA:1:1000-1:2000, WB:1:200-1:1000, IHC:1:50-1:200,

Restrictions: For Research Use only

Handling

Format: Liquid

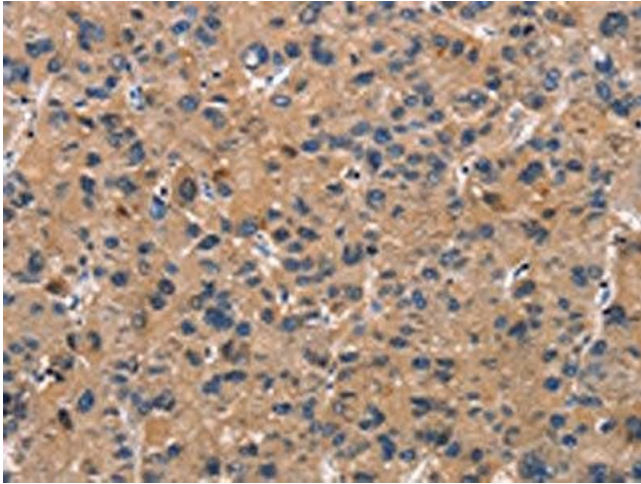
Buffer: -20 °C, pH 7.4 PBS, 0.05 % Sodium azide, 40 % Glycerol

Preservative: Sodium azide

Precaution of Use: This product contains Sodium azide: a POISONOUS AND HAZARDOUS SUBSTANCE which should be handled by trained staff only.

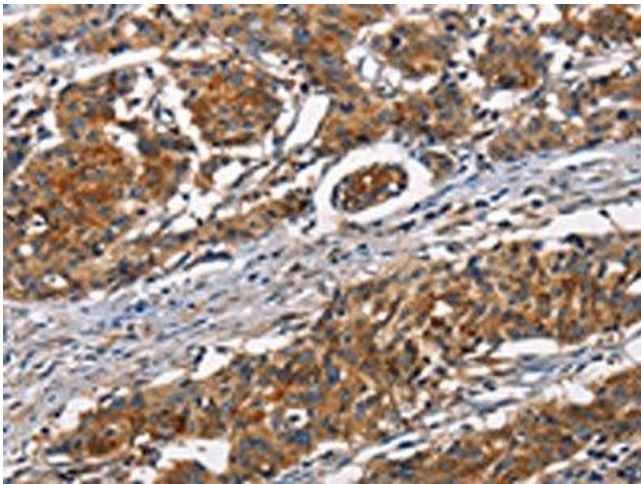
Storage: -20 °C,-80 °C

Storage Comment: Upon receipt, store at -20°C or -80°C. Avoid repeated freeze.



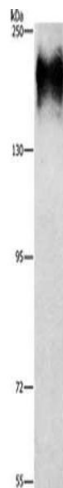
Immunohistochemistry

Image 1. The image on the left is immunohistochemistry of paraffin-embedded Human liver cancer tissue using ABIN7189936(ATP7A Antibody) at dilution 1/50, on the right is treated with synthetic peptide. (Original magnification: x200)



Immunohistochemistry

Image 2. The image on the left is immunohistochemistry of paraffin-embedded Human gastric cancer tissue using ABIN7189936(ATP7A Antibody) at dilution 1/50, on the right is treated with synthetic peptide. (Original magnification: x200)



Western Blotting

Image 3. Gel: 6 % SDS-PAGE, Lysate: 40 µg, Lane: HepG2 cells, Primary antibody: ABIN7189936(ATP7A Antibody) at dilution 1/800, Secondary antibody: Goat anti rabbit IgG at 1/8000 dilution, Exposure time: 10 minutes