



Datasheet for ABIN7189955
anti-BAZ1A antibody



[Go to Product page](#)

1 Image

Overview

Quantity:	100 µL
Target:	BAZ1A
Reactivity:	Human
Host:	Rabbit
Clonality:	Polyclonal
Conjugate:	This BAZ1A antibody is un-conjugated
Application:	ELISA, Immunohistochemistry (IHC)

Product Details

Immunogen:	Synthetic peptide of Human BAZ1A
Isotype:	IgG
Cross-Reactivity:	Human, Mouse
Purification:	Antigen affinity purification

Target Details

Target:	BAZ1A
Alternative Name:	BAZ1A (BAZ1A Products)
Background:	Background: Bromodomain adjacent to zinc finger domain protein 1A is a protein that in humans is encoded by the BAZ1A gene. Component of the ACF complex, an ATP-dependent chromatin remodeling complex, that regulates spacing of nucleosomes using ATP to generate evenly spaced nucleosomes along the chromatin. The ATPase activity of the complex is

Target Details

regulated by the length of flanking DNA. Also involved in facilitating the DNA replication process. BAZ1A is the accessory, non-catalytic subunit of the complex which can enhance and direct the process provided by the ATPase subunit, SMARCA5, probably through targeting pericentromeric heterochromatin in late S phase.

Aliases: Acf1 antibody, ACF1, drosophila, homolog of antibody, ATP dependent chromatin remodelling protein antibody, ATP utilizing chromatin assembly and remodeling factor 1 antibody, ATP-dependent chromatin-remodeling protein antibody, ATP-utilizing chromatin assembly and remodeling factor 1 antibody, B930060C03 antibody, Baz1a antibody, BAZ1A_HUMAN antibody, BC065123 antibody, Bromodomain adjacent to zinc finger domain 1A antibody, Bromodomain adjacent to zinc finger domain protein 1A antibody, cbp146 antibody, CHRAC subunit ACF1 antibody, DKFZp586E0518 antibody, FLJ14383 antibody, Gtl5 antibody, hACF1 antibody, hWALp1 antibody, WALp1 antibody, WCRF180 antibody, Williams syndrome transcription factor related chromatin remodeling factor 180 antibody, Williams syndrome transcription factor-related chromatin-remodeling factor 180 antibody

UniProt: [Q9NRL2](#)

Application Details

Application Notes: ELISA:1:1000-1:2000, IHC:1:25-1:100,

Restrictions: For Research Use only

Handling

Format: Liquid

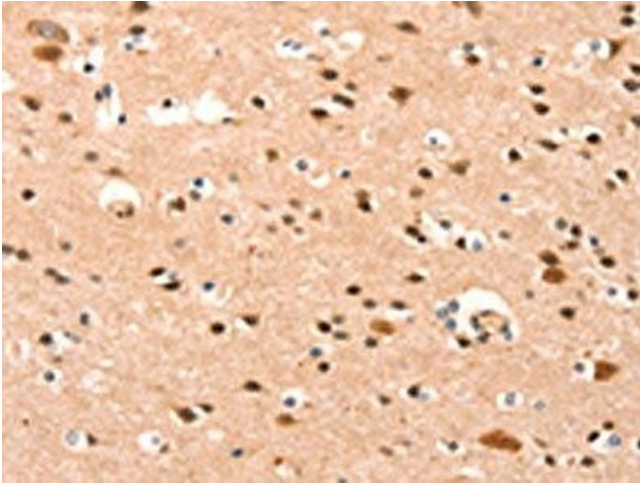
Buffer: -20 °C, pH 7.4 PBS, 0.05 % Sodium azide, 40 % Glycerol

Preservative: Sodium azide

Precaution of Use: This product contains Sodium azide: a POISONOUS AND HAZARDOUS SUBSTANCE which should be handled by trained staff only.

Storage: -20 °C,-80 °C

Storage Comment: Upon receipt, store at -20°C or -80°C. Avoid repeated freeze.



Immunohistochemistry

Image 1. The image on the left is immunohistochemistry of paraffin-embedded Human brain tissue using ABIN7189955(BAZ1A Antibody) at dilution 1/25, on the right is treated with synthetic peptide. (Original magnification: x200)