

Datasheet for ABIN7189956

**anti-BAZ1B antibody**[Go to Product page](#)**1** Image

## Overview

Quantity:	100 µL
Target:	BAZ1B
Reactivity:	Human
Host:	Rabbit
Clonality:	Polyclonal
Conjugate:	This BAZ1B antibody is un-conjugated
Application:	ELISA, Immunohistochemistry (IHC)

## Product Details

Immunogen:	Synthetic peptide of Human BAZ1B
Isotype:	IgG
Cross-Reactivity:	Human, Mouse
Purification:	Antigen affinity purification

## Target Details

Target:	BAZ1B
Alternative Name:	BAZ1B ( <a href="#">BAZ1B Products</a> )
Background:	Background: This gene encodes a member of the bromodomain protein family. The bromodomain is a structural motif characteristic of proteins involved in chromatin-dependent regulation of transcription. This gene is deleted in Williams-Beuren syndrome, a developmental disorder caused by deletion of multiple genes at 7q11.23.

## Target Details

Aliases: bromodomain adjacent to zinc finger domain, 1B

UniProt: [Q9UIG0](#)

Pathways: [Nuclear Hormone Receptor Binding](#), [Chromatin Binding](#)

## Application Details

Application Notes: ELISA:1:2000-1:5000, IHC:1:25-1:100,

Restrictions: For Research Use only

## Handling

Format: Liquid

Buffer: -20 °C, pH 7.4 PBS, 0.05 % Sodium azide, 40 % Glycerol

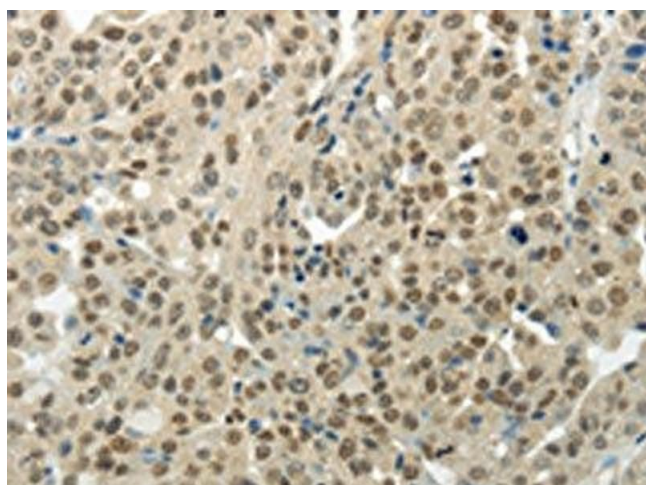
Preservative: Sodium azide

Precaution of Use: This product contains Sodium azide: a POISONOUS AND HAZARDOUS SUBSTANCE which should be handled by trained staff only.

Storage: -20 °C, -80 °C

Storage Comment: Upon receipt, store at -20°C or -80°C. Avoid repeated freeze.

## Images



### Immunohistochemistry

**Image 1.** The image on the left is immunohistochemistry of paraffin-embedded Human breast cancer tissue using ABIN7189956 (BAZ1B Antibody) at dilution 1/35, on the right is treated with synthetic peptide. (Original magnification: x200)