

Datasheet for ABIN7189978
anti-Bestrophin 1 antibody

2 Images

[Go to Product page](#)

Overview

Quantity:	100 µL
Target:	Bestrophin 1 (BEST1)
Reactivity:	Human
Host:	Rabbit
Clonality:	Polyclonal
Conjugate:	This Bestrophin 1 antibody is un-conjugated
Application:	Western Blotting (WB), Immunohistochemistry (IHC), ELISA

Product Details

Immunogen:	Synthetic peptide of Human BEST1
Isotype:	IgG
Cross-Reactivity:	Human, Mouse
Purification:	Antigen affinity purification

Target Details

Target:	Bestrophin 1 (BEST1)
Alternative Name:	BEST1 (BEST1 Products)
Background:	Background: This gene encodes a member of the bestrophin gene family. This small gene family is characterized by proteins with a highly conserved N-terminus with four to six transmembrane domains. Bestrophins may form chloride ion channels or may regulate voltage-gated L-type calcium-ion channels. Bestrophins are generally believed to form calcium-

Target Details

activated chloride-ion channels in epithelial cells but they have also been shown to be highly permeable to bicarbonate ion transport in retinal tissue. Mutations in this gene are responsible for juvenile-onset vitelliform macular dystrophy (VMD2), also known as Best macular dystrophy, in addition to adult-onset vitelliform macular dystrophy (AVMD) and other retinopathies.

Alternative splicing results in multiple variants encoding distinct isoforms.

Aliases: ARB antibody, BEST 1 antibody, BEST antibody, Best disease antibody, Best macular dystrophy antibody, BEST1 antibody, BEST1_HUMAN antibody, Best1V1Delta2 antibody, Bestrophin 1 antibody, Bestrophin-1 antibody, Bestrophin1 antibody, BMD antibody, mBest1 antibody, RP50 antibody, TU15B antibody, Vitelliform macular dystrophy 2 antibody, Vitelliform macular dystrophy antibody, Vitelliform macular dystrophy protein 2 antibody, VMD 2 antibody, VMD2 antibody

UniProt: [O76090](#)

Application Details

Application Notes: ELISA:1:1000-1:2000, WB:1:200-1:1000, IHC:1:25-1:100,

Restrictions: For Research Use only

Handling

Format: Liquid

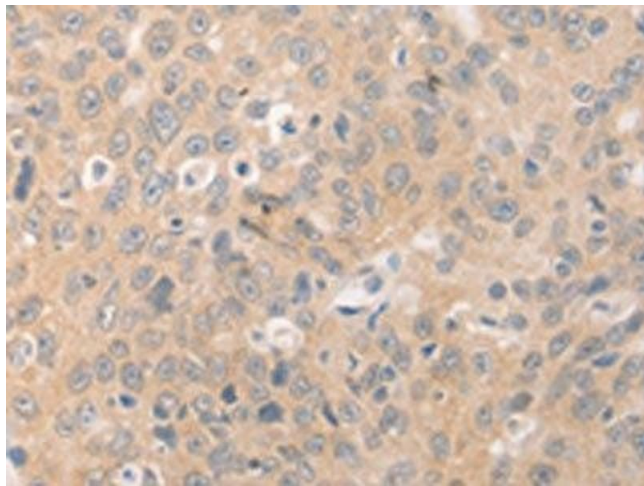
Buffer: -20 °C, pH 7.4 PBS, 0.05 % Sodium azide, 40 % Glycerol

Preservative: Sodium azide

Precaution of Use: This product contains Sodium azide: a POISONOUS AND HAZARDOUS SUBSTANCE which should be handled by trained staff only.

Storage: -20 °C, -80 °C

Storage Comment: Upon receipt, store at -20°C or -80°C. Avoid repeated freeze.



Immunohistochemistry

Image 1. The image on the left is immunohistochemistry of paraffin-embedded Human ovarian cancer tissue using ABIN7189978(BEST1 Antibody) at dilution 1/20, on the right is treated with synthetic peptide. (Original magnification: x200)



Western Blotting

Image 2. Gel: 10 % SDS-PAGE, Lysate: 40 µg, Lane: Mouse eyes tissue, Primary antibody: ABIN7189978(BEST1 Antibody) at dilution 1/300, Secondary antibody: Goat anti rabbit IgG at 1/8000 dilution, Exposure time: 2 minutes