



[Go to Product page](#)

Datasheet for ABIN7190003  
**anti-BPIFB1 antibody**

2 Images

Overview

Quantity:	100 µL
Target:	BPIFB1
Reactivity:	Human
Host:	Rabbit
Clonality:	Polyclonal
Conjugate:	This BPIFB1 antibody is un-conjugated
Application:	Western Blotting (WB), ELISA, Immunohistochemistry (IHC)

Product Details

Immunogen:	Synthetic peptide of Human BPIFB1
Isotype:	IgG
Cross-Reactivity:	Human
Purification:	Antigen affinity purification

Target Details

Target:	BPIFB1
Alternative Name:	BPIFB1 ( <a href="#">BPIFB1 Products</a> )
Background:	Background: The protein encoded by this gene may be involved in the innate immune response to bacterial exposure in the mouth, nasal cavities, and lungs. The encoded protein is secreted and is a member of the BPI/LBP/PLUNC protein superfamily. This gene is found with other members of the superfamily in a cluster on chromosome 20.

## Target Details

Aliases: BPIFB1 antibody, C20orf114 antibody, LPLUNC1 antibody, UNQ706/PRO1357BPI fold-containing family B member 1 antibody, Long palate antibody, lung and nasal epithelium carcinoma-associated protein 1 antibody, von Ebner minor salivary gland protein antibody, VEMSGP antibody

UniProt: [Q8TDL5](#)

## Application Details

Application Notes: ELISA:1:1000-1:5000, WB:1:500-1:2000, IHC:1:25-1:100,

Restrictions: For Research Use only

## Handling

Format: Liquid

Buffer: -20 °C, pH 7.4 PBS, 0.05 % Sodium azide, 40 % Glycerol

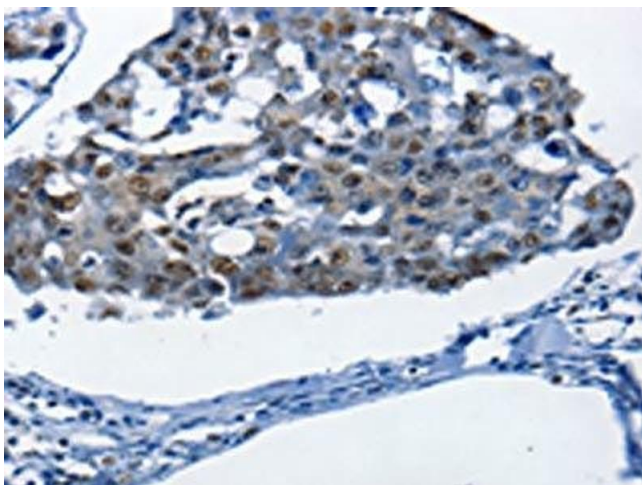
Preservative: Sodium azide

Precaution of Use: This product contains Sodium azide: a POISONOUS AND HAZARDOUS SUBSTANCE which should be handled by trained staff only.

Storage: -20 °C,-80 °C

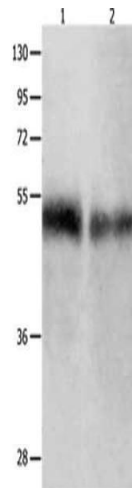
Storage Comment: Upon receipt, store at -20°C or -80°C. Avoid repeated freeze.

## Images



### Immunohistochemistry

**Image 1.** The image on the left is immunohistochemistry of paraffin-embedded Human breast cancer tissue using ABIN7190003(BPIFB1 Antibody) at dilution 1/25, on the right is treated with synthetic peptide. (Original magnification: x200)



### Western Blotting

**Image 2.** Gel: 10 % SDS-PAGE, Lysate: 50 µg, Lane 1-2: Human tongue tissue, Human laryngocarcinoma tissue, Primary antibody: ABIN7190003(BPIFB1 Antibody) at dilution 1/500, Secondary antibody: Goat anti rabbit IgG at 1/8000 dilution, Exposure time: 1 minute