

Datasheet for ABIN7190028

anti-CTRP5 antibody[Go to Product page](#)**1** Image

Overview

Quantity:	100 µL
Target:	CTRP5 (C1QTNF5)
Reactivity:	Human
Host:	Guinea Pig
Clonality:	Polyclonal
Application:	Western Blotting (WB), ELISA

Product Details

Immunogen:	Synthetic peptide of Human C1QTNF5
Isotype:	IgG
Cross-Reactivity:	Human, Mouse
Purification:	Antigen affinity purification

Target Details

Target:	CTRP5 (C1QTNF5)
Alternative Name:	C1QTNF5 (C1QTNF5 Products)
Background:	Background: This gene encodes a member of the a member of the C1q/tumor necrosis factor superfamily. The encoded protein may be a component of basement membranes and may play a role in cell adhesion. This gene is contained entirely within the 3' UTR of the membrane frizzled-related protein gene on chromosome 11q23 and both genes are expressed from a bicistronic transcript. Mutations in this gene have been associated with late-onset retinal

Target Details

degeneration.

Aliases: C1QTNF5 antibody, CTRP5 antibody, UNQ303/PRO344 antibody, Complement C1q tumor necrosis factor-related protein 5 antibody

UniProt: [Q9BXJ0](#)

Application Details

Application Notes: ELISA:1:1000-1:2000, WB:1:200-1:1000,

Restrictions: For Research Use only

Handling

Format: Liquid

Buffer: -20 °C, pH 7.4 PBS, 0.05 % Sodium azide, 40 % Glycerol

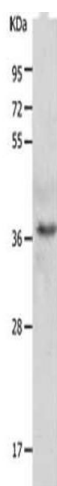
Preservative: Sodium azide

Precaution of Use: This product contains Sodium azide: a POISONOUS AND HAZARDOUS SUBSTANCE which should be handled by trained staff only.

Storage: -20 °C,-80 °C

Storage Comment: Upon receipt, store at -20°C or -80°C. Avoid repeated freeze.

Images



Western Blotting

Image 1. Gel: 10+12 % SDS-PAGE, Lysate: 40 µg, Lane: A549 cells, Primary antibody: ABIN7190028(C1QTNF5 Antibody) at dilution 1/300, Secondary antibody: Donkey anti Guinea pig IgG at 1/8000 dilution, Exposure time: 5 seconds