

Datasheet for ABIN7190032

anti-CABLES2 antibody**2** Images[Go to Product page](#)

Overview

Quantity:	100 µL
Target:	CABLES2
Reactivity:	Human
Host:	Rabbit
Clonality:	Polyclonal
Conjugate:	This CABLES2 antibody is un-conjugated
Application:	ELISA, Immunohistochemistry (IHC)

Product Details

Immunogen:	Synthetic peptide of Human CABLES2
Isotype:	IgG
Cross-Reactivity:	Human, Mouse
Purification:	Antigen affinity purification

Target Details

Target:	CABLES2
Alternative Name:	CABLES2 (CABLES2 Products)
Background:	Background: Cables2 (Cdk5 and ABL1 enzyme substrate 2), also known as Ik3-2, is a 478 amino acid ubiquitously expressed protein that has a C-terminal cyclin box-containing domain, making it a member of the cyclin protein superfamily. A related protein, Cables, forms a trimolecular complex with Cdk5 and c-Abl in vivo, enhances apoptosis induced by overexpression of p53

Target Details

and may be a tumor suppressor, due to its chromosomal loss of heterozygosity that is found in certain cancers. Cables2 shares 78 % sequence similarity with Cables in the region of the cyclin box-containing domain and, in similar functionality, associates with Cdk3, Cdk5 and c-Abl.

However, unlike its close relative, Cables2 also contains an N-terminal region that enhances not only p53-mediated cell death, but also p53-independent cell death. This characteristic suggests that the gene encoding Cables2 may also function as a tumor suppressor gene.

Aliases: CABLES2 antibody, C20orf150 antibody, CDK5 and ABL1 enzyme substrate 2 antibody, Interactor with CDK3 2 antibody, Ik3-2 antibody

UniProt: [Q9BTV7](#)

Application Details

Application Notes: ELISA:1:1000-1:2000, IHC:1:25-1:100,

Restrictions: For Research Use only

Handling

Format: Liquid

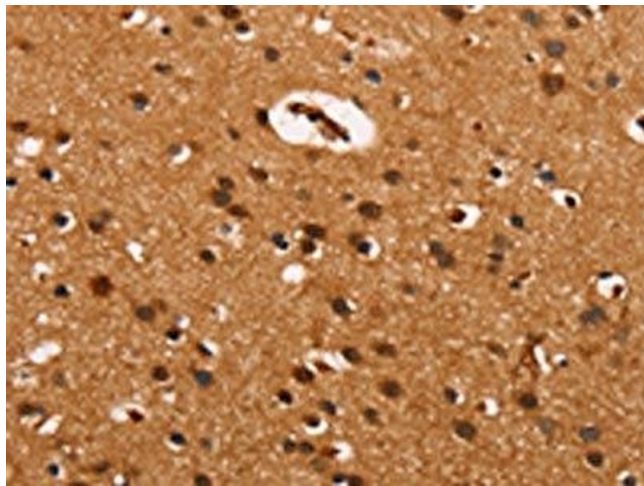
Buffer: -20 °C, pH 7.4 PBS, 0.05 % Sodium azide, 40 % Glycerol

Preservative: Sodium azide

Precaution of Use: This product contains Sodium azide: a POISONOUS AND HAZARDOUS SUBSTANCE which should be handled by trained staff only.

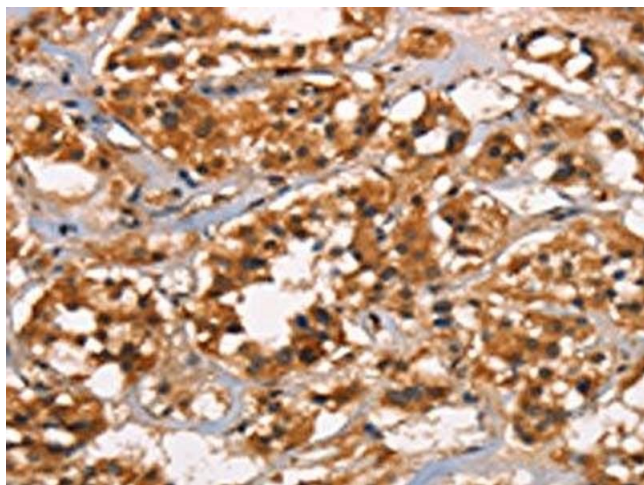
Storage: -20 °C, -80 °C

Storage Comment: Upon receipt, store at -20°C or -80°C. Avoid repeated freeze.



Immunohistochemistry

Image 1. The image on the left is immunohistochemistry of paraffin-embedded Human brain tissue using ABIN7190032(CABLES2 Antibody) at dilution 1/25, on the right is treated with synthetic peptide. (Original magnification: x200)



Immunohistochemistry

Image 2. The image on the left is immunohistochemistry of paraffin-embedded Human thyroid cancer tissue using ABIN7190032(CABLES2 Antibody) at dilution 1/25, on the right is treated with synthetic peptide. (Original magnification: x200)