

## Datasheet for ABIN7190211

**anti-CENPE antibody**

## 3 Images

[Go to Product page](#)

## Overview

Quantity:	100 µL
Target:	CENPE
Reactivity:	Human
Host:	Rabbit
Clonality:	Polyclonal
Conjugate:	This CENPE antibody is un-conjugated
Application:	Western Blotting (WB), ELISA, Immunohistochemistry (IHC)

## Product Details

Immunogen:	Synthetic peptide of Human CENPE
Isotype:	IgG
Cross-Reactivity:	Human, Mouse
Purification:	Antigen affinity purification

## Target Details

Target:	CENPE
Alternative Name:	CENPE ( <a href="#">CENPE Products</a> )
Background:	Background: Centrosome-associated protein E is a kinesin-like motor protein that accumulates in the G2 phase of the cell cycle. Unlike other centrosome-associated proteins, it is not present during interphase and first appears at the centromere region of chromosomes during prometaphase. CENPE is proposed to be one of the motors responsible for mammalian

## Target Details

chromosome movement and/or spindle elongation.

Aliases: CENPECentromere-associated protein E antibody, Centromere protein E antibody, CENP-E antibody, Kinesin-7 antibody, Kinesin-related protein CENPE antibody

UniProt: [Q02224](#)

Pathways: [M Phase](#), [Maintenance of Protein Location](#)

## Application Details

Application Notes: ELISA:1:2000-1:5000, WB:1:500-1:2000, IHC:1:50-1:200,

Restrictions: For Research Use only

## Handling

Format: Liquid

Buffer: -20 °C, pH 7.4 PBS, 0.05 % Sodium azide, 40 % Glycerol

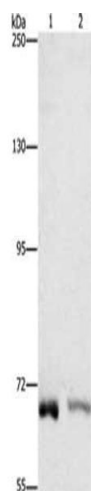
Preservative: Sodium azide

Precaution of Use: This product contains Sodium azide: a POISONOUS AND HAZARDOUS SUBSTANCE which should be handled by trained staff only.

Storage: -20 °C,-80 °C

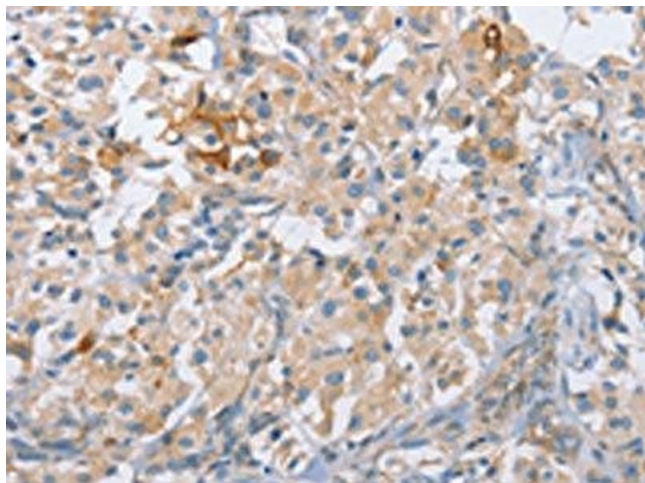
Storage Comment: Upon receipt, store at -20°C or -80°C. Avoid repeated freeze.

## Images



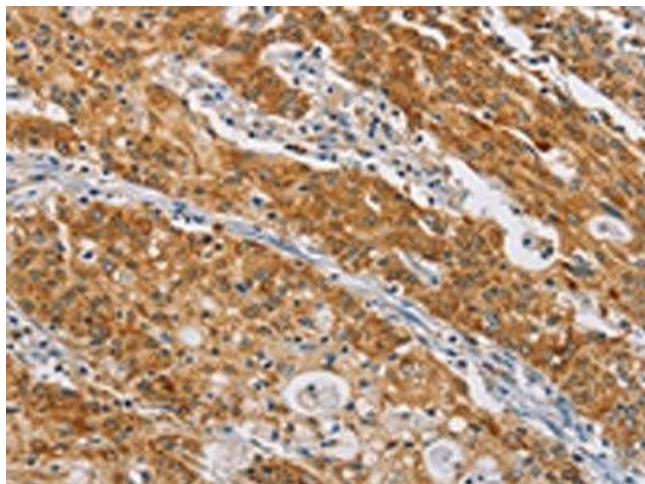
### Western Blotting

**Image 1.** Gel: 6 % SDS-PAGE, Lysate: 40 µg, Lane 1-2: K562 cells, A431 cells, Primary antibody: ABIN7190211(CENPE Antibody) at dilution 1/1400, Secondary antibody: Goat anti rabbit IgG at 1/8000 dilution, Exposure time: 1 minute



#### Immunohistochemistry

**Image 2.** The image on the left is immunohistochemistry of paraffin-embedded Human thyroid cancer tissue using ABIN7190211(CENPE Antibody) at dilution 1/50, on the right is treated with synthetic peptide. (Original magnification: x200)



#### Immunohistochemistry

**Image 3.** The image on the left is immunohistochemistry of paraffin-embedded Human gastric cancer tissue using ABIN7190211(CENPE Antibody) at dilution 1/50, on the right is treated with synthetic peptide. (Original magnification: x200)