



[Go to Product page](#)

Datasheet for ABIN7190220

## anti-Ceramide Synthase 2 antibody

### 1 Image

#### Overview

Quantity:	100 µL
Target:	Ceramide Synthase 2 (CERS2)
Reactivity:	Human
Host:	Rabbit
Clonality:	Polyclonal
Conjugate:	This Ceramide Synthase 2 antibody is un-conjugated
Application:	Western Blotting (WB), ELISA

#### Product Details

Immunogen:	Synthetic peptide of Human CERS2
Isotype:	IgG
Cross-Reactivity:	Human, Mouse
Purification:	Antigen affinity purification

#### Target Details

Target:	Ceramide Synthase 2 (CERS2)
Alternative Name:	CERS2 ( <a href="#">CERS2 Products</a> )
Background:	Background: This gene encodes a protein that has sequence similarity to yeast longevity assurance gene 1. Mutation or overexpression of the related gene in yeast has been shown to alter yeast lifespan. The human protein may play a role in the regulation of cell growth. Alternatively spliced transcript variants encoding the same protein have been described.

## Target Details

---

Suppresses the growth of cancer cells. May be involved in sphingolipid synthesis. Expressed in kidney, liver, brain, heart, placenta and lung.

Aliases: Ceramide synthase 2 antibody, CerS 2 antibody, CerS2 antibody, CERS2\_HUMAN antibody, FLJ10243 antibody, L3 antibody, LAG1 homolog ceramide synthase 2 antibody, LAG1 longevity assurance 2 antibody, LAG1 longevity assurance homolog 2 antibody, LASS 2 antibody, Longevity assurance (LAG1 *S. cerevisiae*) homolog 2 antibody, MGC987 antibody, SP260 antibody, SP260 antibody, TMSG 1 antibody, TMSG1 antibody, Tumor metastasis suppressor antibody, Tumor metastasis suppressor gene 1 protein antibody, Tumor metastasis-suppressor gene 1 protein antibody

---

UniProt: [Q96G23](#)

## Application Details

---

Application Notes: ELISA:1:2000-1:5000, WB:1:500-1:2000,

Restrictions: For Research Use only

## Handling

---

Format: Liquid

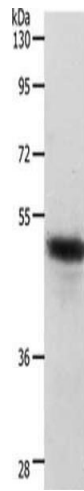
Buffer: -20 °C, pH 7.4 PBS, 0.05 % Sodium azide, 40 % Glycerol

Preservative: Sodium azide

Precaution of Use: This product contains Sodium azide: a POISONOUS AND HAZARDOUS SUBSTANCE which should be handled by trained staff only.

Storage: -20 °C,-80 °C

Storage Comment: Upon receipt, store at -20°C or -80°C. Avoid repeated freeze.



### Western Blotting

**Image 1.** Gel: 10 % SDS-PAGE, Lysate: 40 µg, Lane: Human liver cancer tissue, Primary antibody: ABIN7190220(CERS2 Antibody) at dilution 1/750, Secondary antibody: Goat anti rabbit IgG at 1/8000 dilution, Exposure time: 40 seconds