



Datasheet for ABIN7190228  
**anti-CCDC19 antibody**



[Go to Product page](#)

1 Image

Overview

|              |                                       |
|--------------|---------------------------------------|
| Quantity:    | 100 µL                                |
| Target:      | CCDC19                                |
| Reactivity:  | Human                                 |
| Host:        | Rabbit                                |
| Clonality:   | Polyclonal                            |
| Conjugate:   | This CCDC19 antibody is un-conjugated |
| Application: | Immunohistochemistry (IHC), ELISA     |

Product Details

|                   |                                   |
|-------------------|-----------------------------------|
| Immunogen:        | Synthetic peptide of Human CFAP45 |
| Isotype:          | IgG                               |
| Cross-Reactivity: | Human                             |
| Purification:     | Antigen affinity purification     |

Target Details

|                   |   |
|-------------------|---|
| Target:           | CCDC19  |
| Alternative Name: | CFAP45 ( <a href="#">CCDC19 Products</a> )  |
| Background:       | Background: CCDC19 is a 466 amino acid protein encoded by a gene mapping to human chromosome 1. Chromosome 1 is the largest human chromosome, spanning about 260 million base pairs and making up 8 % of the human genome. There are about 3,000 genes on chromosome 1 and, considering the great number of genes, there are also a large number of |

## Target Details

---

diseases associated with chromosome 1. Notably, the rare aging disease Hutchinson-Gilford progeria is associated with the LMNA gene which encodes Lamin A. When defective, the LMNA gene product can build up in the nucleus and cause characteristic nuclear blebs. The mechanism of rapidly enhanced aging is unclear and is a topic of continuing exploration. The MUTYH gene is located on chromosome 1 and is partially responsible for familial adenomatous polyposis. Stickler syndrome, Parkinson's, Gaucher disease and Usher syndrome are also associated with chromosome 1.

Aliases: CCD19\_HUMAN antibody, CCDC19 antibody, Coiled coil domain containing 19 antibody, Coiled-coil domain-containing protein 19 antibody, mitochondrial antibody, Nasopharyngeal epithelium specific protein 1 antibody, Nasopharyngeal epithelium-specific protein 1 antibody, NESG1 antibody, OTTHUMP00000033461 antibody, RP11 190A12.6 antibody

---

UniProt: [Q9UL16](#)

## Application Details

---

Application Notes: ELISA:1:2000-1:5000, IHC:1:25-1:100,

Restrictions: For Research Use only

## Handling

---

Format: Liquid

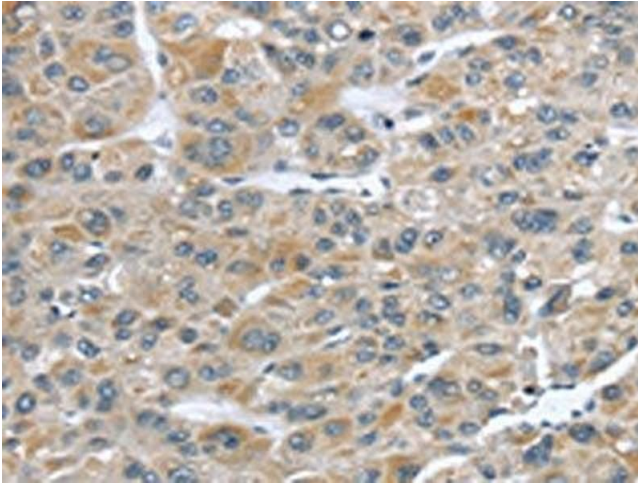
Buffer: -20 °C, pH 7.4 PBS, 0.05 % Sodium azide, 40 % Glycerol

Preservative: Sodium azide

Precaution of Use: This product contains Sodium azide: a POISONOUS AND HAZARDOUS SUBSTANCE which should be handled by trained staff only.

Storage: -20 °C,-80 °C

Storage Comment: Upon receipt, store at -20°C or -80°C. Avoid repeated freeze.



### Immunohistochemistry

**Image 1.** The image on the left is immunohistochemistry of paraffin-embedded Human liver cancer tissue using ABIN7190228(CFAP45 Antibody) at dilution 1/25, on the right is treated with synthetic peptide. (Original magnification: x200)