



Datasheet for ABIN7190229

## anti-CFC1 antibody

3 Images



[Go to Product page](#)

### Overview

Quantity:	100 µL
Target:	CFC1
Reactivity:	Human
Host:	Rabbit
Clonality:	Polyclonal
Conjugate:	This CFC1 antibody is un-conjugated
Application:	Western Blotting (WB), ELISA, Immunohistochemistry (IHC)

### Product Details

Immunogen:	Synthetic peptide of Human CFC1
Isotype:	IgG
Cross-Reactivity:	Human
Purification:	Antigen affinity purification

### Target Details

Target:	CFC1
Alternative Name:	CFC1 ( <a href="#">CFC1 Products</a> )
Background:	<p>Background: This gene encodes a member of the epidermal growth factor (EGF)- Cripto, Frl-1, and Cryptic (CFC) family, which are involved in signalling during embryonic development.</p> <p>Proteins in this family share a variant EGF-like motif, a conserved cysteine-rich domain, and a C-terminal hydrophobic region. The protein encoded by this gene is necessary for patterning the</p>

## Target Details

left-right embryonic axis.

Aliases: CFC 1 antibody, CFC1 antibody, CFC1\_HUMAN antibody, CFC1B antibody, CR 1 antibody, Cripto 1 antibody, Cripto FRL 1 cryptic family 1 antibody, CRYPTIC antibody, Cryptic family 1 antibody, Cryptic family protein 1 antibody, Cryptic gene antibody, Cryptic protein antibody, DTGA2 antibody, FLJ77897 antibody, FRL 1 antibody, Heterotaxy 2 (autosomal dominant) antibody, HTX2 antibody, MGC133213 antibody

UniProt: [P0CG37](#)

## Application Details

Application Notes: ELISA:1:1000-1:2000, WB:1:200-1:1000, IHC:1:20-1:100,

Restrictions: For Research Use only

## Handling

Format: Liquid

Buffer: -20 °C, pH 7.4 PBS, 0.05 % Sodium azide, 40 % Glycerol

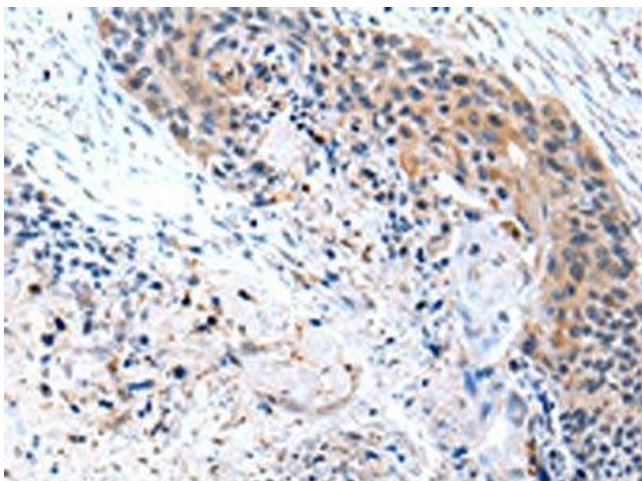
Preservative: Sodium azide

Precaution of Use: This product contains Sodium azide: a POISONOUS AND HAZARDOUS SUBSTANCE which should be handled by trained staff only.

Storage: -20 °C,-80 °C

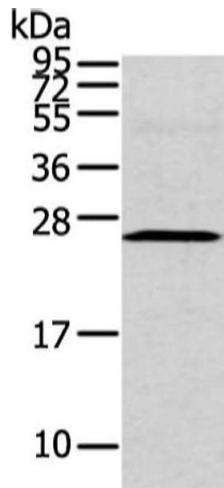
Storage Comment: Upon receipt, store at -20°C or -80°C. Avoid repeated freeze.

## Images



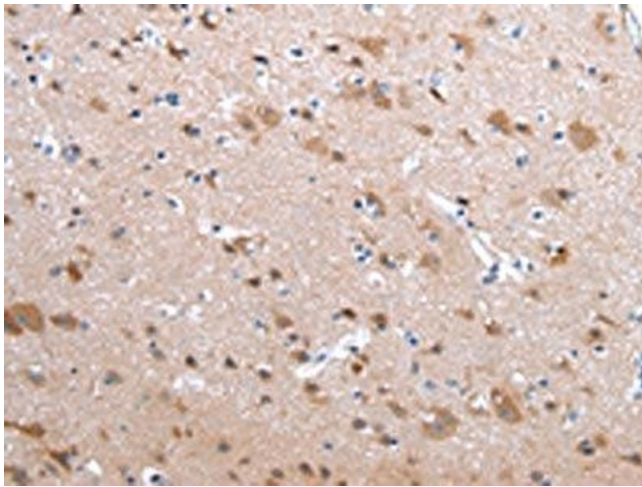
### Immunohistochemistry

**Image 1.** The image on the left is immunohistochemistry of paraffin-embedded Human esophagus cancer tissue using ABIN7190229(CFC1 Antibody) at dilution 1/20, on the right is treated with synthetic peptide. (Original magnification: x200)



### Western Blotting

**Image 2.** Gel: 12 % SDS-PAGE, Lysate: 40 µg, Lane: Human fetal intestines tissue, Primary antibody: ABIN7190229(CFC1 Antibody) at dilution 1/200 dilution, Secondary antibody: Goat anti rabbit IgG at 1/8000 dilution, Exposure time: 2 minutes



### Immunohistochemistry

**Image 3.** The image on the left is immunohistochemistry of paraffin-embedded Human brain tissue using ABIN7190229(CFC1 Antibody) at dilution 1/20, on the right is treated with synthetic peptide. (Original magnification: x200)