

Datasheet for ABIN7190246

anti-CHRD2 antibody**3** Images[Go to Product page](#)

Overview

Quantity:	100 µL
Target:	CHRD2
Reactivity:	Human
Host:	Rabbit
Clonality:	Polyclonal
Conjugate:	This CHRD2 antibody is un-conjugated
Application:	Western Blotting (WB), ELISA, Immunohistochemistry (IHC)

Product Details

Immunogen:	Synthetic peptide of Human CHRD2
Isotype:	IgG
Cross-Reactivity:	Human
Purification:	Antigen affinity purification

Target Details

Target:	CHRD2
Alternative Name:	CHRD2 (CHRD2 Products)
Background:	Background: CHRD2 (chordin-related protein 2), also known as BNF1 (breast tumor novel factor 1) or CHL2 (chordin-like 2), is a 429 amino acid protein that belongs to the chordin family of proteins. CHRD2 contains three VWFC (von Willebrand Factor type C) domains and is predominantly expressed in uterus and moderately expressed in prostate, liver, ovary, heart and

Target Details

testis. Due to alternative splicing events, CHRDL2 exists as five isoforms, namely isoform I, isoform II, isoform VII, isoform VIII and isoform IX. Two of these isoforms are secreted, while the other three localize to the cytoplasm. Functioning as a BMP-binding inhibitor, CHRDL2 directly interacts with BMPs and blocks their binding to BMP receptors, thereby inhibiting BMP activity. In breast, lung and colon tumors, CHRDL2 expression is upregulated, suggesting a possible role in tumorigenesis.

Aliases: BNF-1 antibody, BNF1 antibody, Breast tumor novel factor 1 antibody, CHL2 antibody, chordin like 2 antibody, Chordin like protein 2 precursor antibody, Chordin related protein 2 antibody, Chordin-like protein 2 antibody, Chordin-related protein 2 antibody, Chrdl2 antibody, CRDL2_HUMAN antibody, DKFZp586N2124 antibody, FKSG37 antibody

UniProt: [Q6WN34](#)

Application Details

Application Notes: ELISA:1:2000-1:5000, WB:1:500-1:2000, IHC:1:25-1:100,

Restrictions: For Research Use only

Handling

Format: Liquid

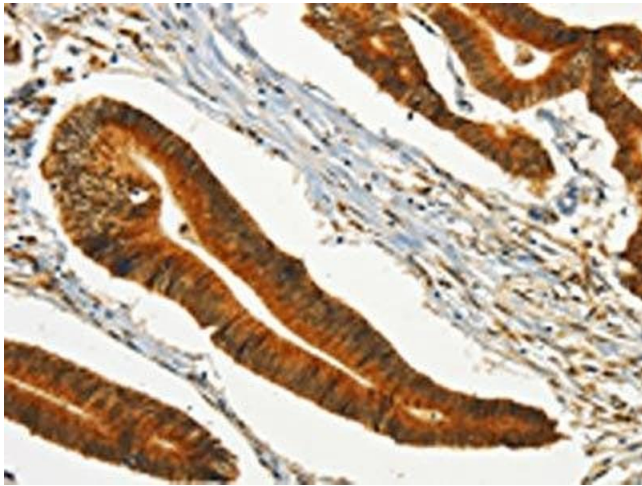
Buffer: -20 °C, pH 7.4 PBS, 0.05 % Sodium azide, 40 % Glycerol

Preservative: Sodium azide

Precaution of Use: This product contains Sodium azide: a POISONOUS AND HAZARDOUS SUBSTANCE which should be handled by trained staff only.

Storage: -20 °C, -80 °C

Storage Comment: Upon receipt, store at -20°C or -80°C. Avoid repeated freeze.



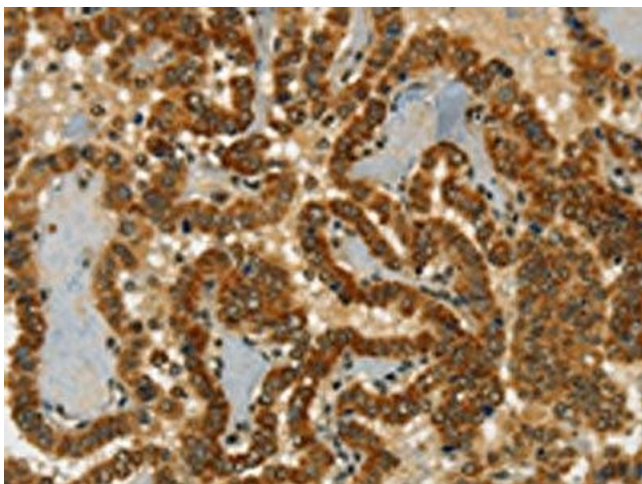
Immunohistochemistry

Image 1. The image on the left is immunohistochemistry of paraffin-embedded Human colon cancer tissue using ABIN7190246(CHRDL2 Antibody) at dilution 1/20, on the right is treated with synthetic peptide. (Original magnification: x200)



Western Blotting

Image 2. Gel: 8 % SDS-PAGE, Lysate: 40 µg, Lane: Human fetal brain tissue, Primary antibody: ABIN7190246(CHRDL2 Antibody) at dilution 1/600, Secondary antibody: Goat anti rabbit IgG at 1/8000 dilution, Exposure time: 1 minute



Immunohistochemistry

Image 3. The image on the left is immunohistochemistry of paraffin-embedded Human thyroid cancer tissue using ABIN7190246(CHRDL2 Antibody) at dilution 1/20, on the right is treated with synthetic peptide. (Original magnification: x200)