

Datasheet for ABIN7190248

anti-CHRNA7 antibody

3 Images

[Go to Product page](#)

Overview

Quantity:	100 µL
Target:	CHRNA7
Reactivity:	Human
Host:	Rabbit
Clonality:	Polyclonal
Conjugate:	This CHRNA7 antibody is un-conjugated
Application:	Western Blotting (WB), ELISA, Immunohistochemistry (IHC)

Product Details

Immunogen:	Synthetic peptide of Human CHRFAM7A
Isotype:	IgG
Cross-Reactivity:	Human, Mouse, Rat
Purification:	Antigen affinity purification

Target Details

Target:	CHRNA7
Alternative Name:	CHRNA7 (CHRNA7 Products)
Background:	Background: The nicotinic acetylcholine receptors (nAChRs) are members of a superfamily of ligand-gated ion channels that mediate fast signal transmission at synapses. The family member CHRNA7, which is located on chromosome 15 in a region associated with several neuropsychiatric disorders, is partially duplicated and forms a hybrid with a novel gene from the

Target Details

family with sequence similarity 7 (FAM7A). Alternative splicing has been observed, and two variants exist, for this hybrid gene. The N-terminally truncated products predicted by the largest open reading frames for each variant would lack the majority of the neurotransmitter-gated ion-channel ligand binding domain but retain the transmembrane region that forms the ion channel. Although current evidence supports transcription of this hybrid gene, translation of the nicotinic acetylcholine receptor-like protein-encoding open reading frames has not been confirmed.

Aliases: 7nAChR antibody, a7 nicotinic acetylcholine receptor antibody, acetylcholine receptor, neuronal nicotinic, alpha-7 subunit antibody, ACHA7_HUMAN antibody, AChR antibody, Acra7 antibody, alpha 7 neuronal nicotinic acetylcholine receptor antibody, alpha-7 nicotinic cholinergic receptor subunit antibody, alpha7 antibody, cholinergic receptor, neuronal nicotinic, alpha polypeptide 7 antibody, cholinergic receptor, nicotinic, alpha 7 (neuronal) antibody, cholinergic receptor, nicotinic, alpha 7 antibody, cholinergic receptor, nicotinic, alpha polypeptide 7 antibody, CHRNA7 antibody, CHRNA7-2 antibody, NACHRA7 antibody, neuronal acetylcholine receptor protein, alpha-7 chain antibody, Neuronal acetylcholine receptor subunit alpha-7 antibody

UniProt: [P36544](#)

Pathways: [Synaptic Membrane](#)

Application Details

Application Notes: ELISA:1:2000-1:5000, WB:1:500-1:2000, IHC:1:25-1:100,

Restrictions: For Research Use only

Handling

Format: Liquid

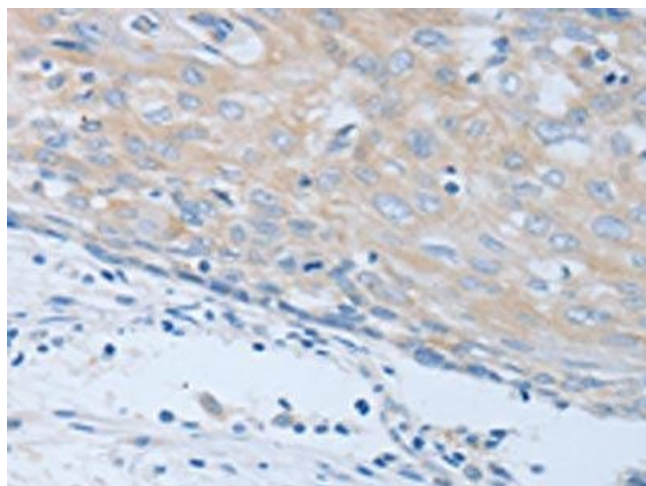
Buffer: -20 °C, pH 7.4 PBS, 0.05 % Sodium azide, 40 % Glycerol

Preservative: Sodium azide

Precaution of Use: This product contains Sodium azide: a POISONOUS AND HAZARDOUS SUBSTANCE which should be handled by trained staff only.

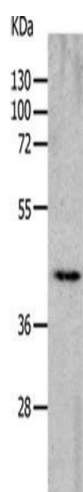
Storage: -20 °C, -80 °C

Storage Comment: Upon receipt, store at -20°C or -80°C. Avoid repeated freeze.



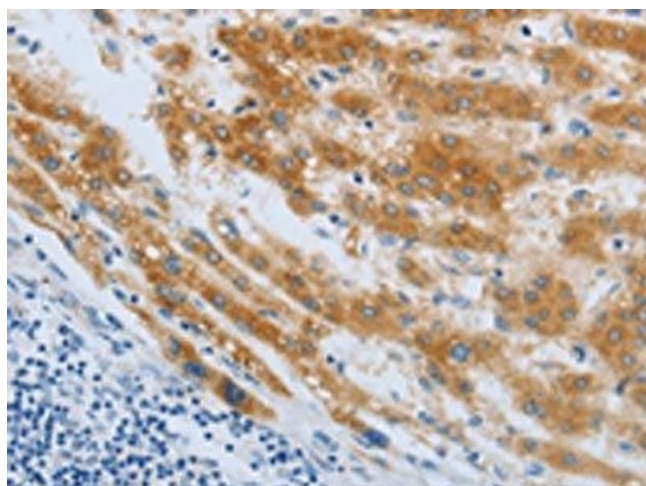
Immunohistochemistry

Image 1. The image on the left is immunohistochemistry of paraffin-embedded Human cervical cancer tissue using ABIN7190248(CHRFAM7A Antibody) at dilution 1/40, on the right is treated with synthetic peptide. (Original magnification: x200)



Western Blotting

Image 2. Gel: 10 % SDS-PAGE, Lysate: 40 µg, Lane: Mouse heart tissue, Primary antibody: ABIN7190248(CHRFAM7A Antibody) at dilution 1/700, Secondary antibody: Goat anti rabbit IgG at 1/8000 dilution, Exposure time: 2 minutes



Immunohistochemistry

Image 3. The image on the left is immunohistochemistry of paraffin-embedded Human liver cancer tissue using ABIN7190248(CHRFAM7A Antibody) at dilution 1/40, on the right is treated with synthetic peptide. (Original magnification: x200)