

Datasheet for ABIN7190258

anti-CHRNA3 antibody**2** Images[Go to Product page](#)

Overview

Quantity:	100 µL
Target:	CHRNA3
Reactivity:	Human
Host:	Rabbit
Clonality:	Polyclonal
Conjugate:	This CHRNA3 antibody is un-conjugated
Application:	Western Blotting (WB), ELISA, Immunohistochemistry (IHC)

Product Details

Immunogen:	Synthetic peptide of Human CHRNA3
Isotype:	IgG
Cross-Reactivity:	Human, Mouse, Rat
Purification:	Antigen affinity purification

Target Details

Target:	CHRNA3
Alternative Name:	CHRNA3 (CHRNA3 Products)
Background:	Background: This locus encodes a member of the nicotinic acetylcholine receptor family of proteins. Members of this family of proteins form pentameric complexes comprised of both alpha and beta subunits. This locus encodes an alpha-type subunit, as it contains characteristic adjacent cysteine residues. The encoded protein is a ligand-gated ion channel that likely plays a

Target Details

role in neurotransmission. Polymorphisms in this gene have been associated with an increased risk of smoking initiation and an increased susceptibility to lung cancer. Alternatively spliced transcript variants have been described.

Aliases: ACHA3_HUMAN antibody, AChR antibody, Cholinergic receptor neuronal nicotinic alpha polypeptide 3 antibody, Cholinergic receptor nicotinic alpha 3 antibody, Cholinergic receptor nicotinic alpha polypeptide 3 antibody, CHRNA 3 antibody, CHRNA3 antibody, LNCR2 antibody, MGC104879 antibody, NACHRA 3 antibody, NACHRA3 antibody, Neuronal acetylcholine receptor protein alpha 3 chain precursor antibody, Neuronal acetylcholine receptor subunit alpha 3 antibody, Neuronal acetylcholine receptor subunit alpha-3 antibody, Neuronal nicotinic acetylcholine receptor alpha 3 subunit antibody, PAOD2 antibody

UniProt: [P32297](#)

Pathways: [Synaptic Membrane](#)

Application Details

Application Notes: ELISA:1:2000-1:10000, WB:1:1000-1:5000, IHC:1:25-1:100,

Restrictions: For Research Use only

Handling

Format: Liquid

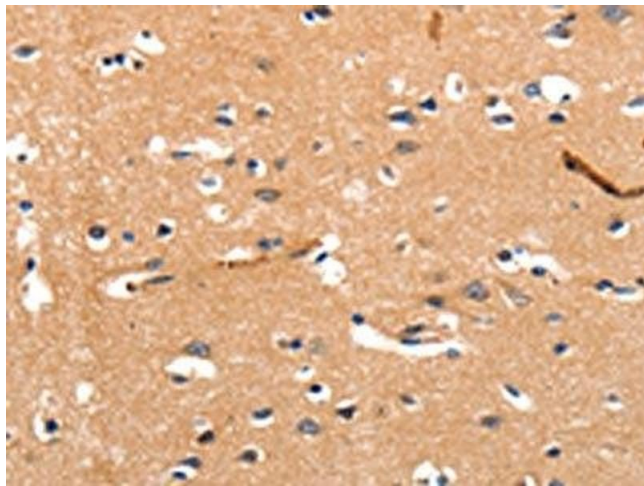
Buffer: -20 °C, pH 7.4 PBS, 0.05 % Sodium azide, 40 % Glycerol

Preservative: Sodium azide

Precaution of Use: This product contains Sodium azide: a POISONOUS AND HAZARDOUS SUBSTANCE which should be handled by trained staff only.

Storage: -20 °C, -80 °C

Storage Comment: Upon receipt, store at -20°C or -80°C. Avoid repeated freeze.



Immunohistochemistry

Image 1. The image on the left is immunohistochemistry of paraffin-embedded Human brain tissue using ABIN7190258(CHRNA3 Antibody) at dilution 1/30, on the right is treated with synthetic peptide. (Original magnification: x200)



Western Blotting

Image 2. Gel: 10 % SDS-PAGE, Lysate: 40 µg, Lane: Human fetal lung tissue, Primary antibody: ABIN7190258(CHRNA3 Antibody) at dilution 1/600, Secondary antibody: Goat anti rabbit IgG at 1/8000 dilution, Exposure time: 1 minute