

Datasheet for ABIN7190314

anti-CMTM7 antibody**2** Images[Go to Product page](#)

Overview

Quantity:	100 µL
Target:	CMTM7
Reactivity:	Human
Host:	Rabbit
Clonality:	Polyclonal
Conjugate:	This CMTM7 antibody is un-conjugated
Application:	ELISA, Immunohistochemistry (IHC)

Product Details

Immunogen:	Synthetic peptide of Human CMTM7
Isotype:	IgG
Cross-Reactivity:	Human
Purification:	Antigen affinity purification

Target Details

Target:	CMTM7
Alternative Name:	CMTM7 (CMTM7 Products)
Background:	Background: This gene belongs to the chemokine-like factor gene superfamily, a novel family that is similar to the chemokine and transmembrane 4 superfamilies. This gene is one of several chemokine-like factor genes located in a cluster on chromosome 3. The protein encoded by this gene is highly expressed in leukocytes, but its exact function is unknown.

Target Details

Alternatively spliced transcript variants encoding different isoforms have been identified.

Aliases: CMTM7 antibody, CKLFSF7CKLF-like MARVEL transmembrane domain-containing protein 7 antibody, Chemokine-like factor superfamily member 7 antibody

UniProt: [Q96FZ5](#)

Application Details

Application Notes: ELISA:1:1000-1:5000, IHC:1:25-1:100,

Restrictions: For Research Use only

Handling

Format: Liquid

Buffer: -20 °C, pH 7.4 PBS, 0.05 % Sodium azide, 40 % Glycerol

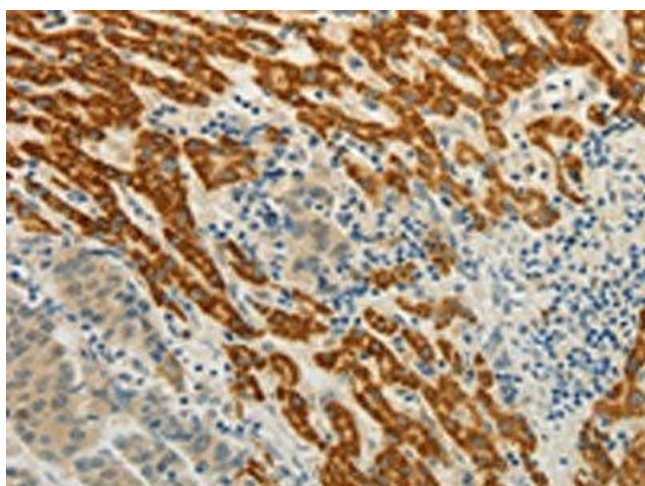
Preservative: Sodium azide

Precaution of Use: This product contains Sodium azide: a POISONOUS AND HAZARDOUS SUBSTANCE which should be handled by trained staff only.

Storage: -20 °C,-80 °C

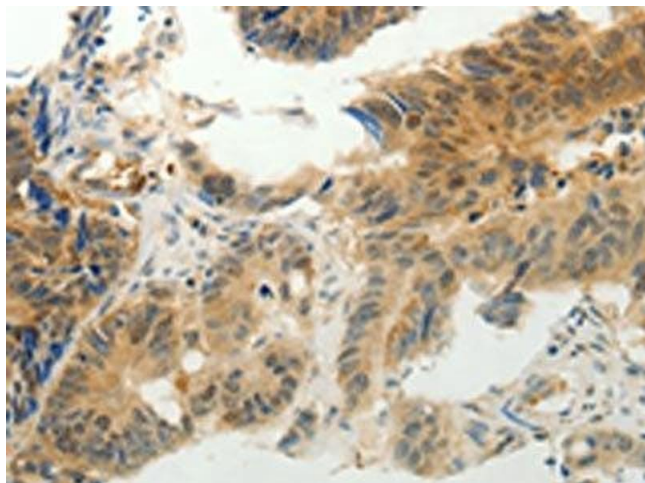
Storage Comment: Upon receipt, store at -20°C or -80°C. Avoid repeated freeze.

Images



Immunohistochemistry

Image 1. The image on the left is immunohistochemistry of paraffin-embedded Human liver cancer tissue using ABIN7190314(CMTM7 Antibody) at dilution 1/30, on the right is treated with synthetic peptide. (Original magnification: X200)



Immunohistochemistry

Image 2. The image on the left is immunohistochemistry of paraffin-embedded Human colon cancer tissue using ABIN7190314(CMTM7 Antibody) at dilution 1/30, on the right is treated with synthetic peptide. (Original magnification: X200)