

## Datasheet for ABIN7190317

**anti-CNGA1 antibody**[Go to Product page](#)

## 1 Image

## Overview

Quantity:	100 µL
Target:	CNGA1
Reactivity:	Human
Host:	Rabbit
Clonality:	Polyclonal
Conjugate:	This CNGA1 antibody is un-conjugated
Application:	ELISA, Immunohistochemistry (IHC)

## Product Details

Immunogen:	Synthetic peptide of Human CNGA1
Isotype:	IgG
Cross-Reactivity:	Human
Purification:	Antigen affinity purification

## Target Details

Target:	CNGA1
Alternative Name:	CNGA1 ( <a href="#">CNGA1 Products</a> )
Background:	Background: The protein encoded by this gene is involved in phototransduction. Along with another protein, the encoded protein forms a cGMP-gated cation channel in the plasma membrane, allowing depolarization of rod photoreceptors. This represents the last step in the phototransduction pathway. Defects in this gene are a cause of retinitis pigmentosa autosomal

## Target Details

recessive (ARRP) disease. Two transcript variants encoding different isoforms have been found for this gene.

Aliases: cGMP gated cation channel alpha 1 antibody, cGMP-gated cation channel alpha-1 antibody, CNCG antibody, CNCG1 antibody, CNG 1 antibody, CNG channel alpha 1 antibody, CNG channel alpha-1 antibody, CNG-1 antibody, CNG1 antibody, Cnga1 antibody, CNGA1\_HUMAN antibody, Cyclic nucleotide gated cation channel 1 antibody, Cyclic nucleotide gated channel alpha 1 antibody, Cyclic nucleotide gated channel photoreceptor antibody, Cyclic nucleotide-gated cation channel 1 antibody, Cyclic nucleotide-gated channel alpha-1 antibody, Cyclic nucleotide-gated channel antibody, Interleukin 1 homologue antibody, OTTHUMP00000218675 antibody, OTTHUMP00000223313 antibody, OTTHUMP00000223314 antibody, photoreceptor antibody, RCNC1 antibody, RCNCa antibody, RCNCalpha antibody, Rod photoreceptor cGMP gated channel subunit alpha antibody, Rod photoreceptor cGMP-gated channel subunit alpha antibody, RP49 antibody

UniProt: [P29973](#)

Pathways: [Regulation of G-Protein Coupled Receptor Protein Signaling](#), [Phototransduction](#), [Asymmetric Protein Localization](#)

## Application Details

Application Notes: ELISA:1:1000-1:2000, IHC:1:25-1:100,

Restrictions: For Research Use only

## Handling

Format: Liquid

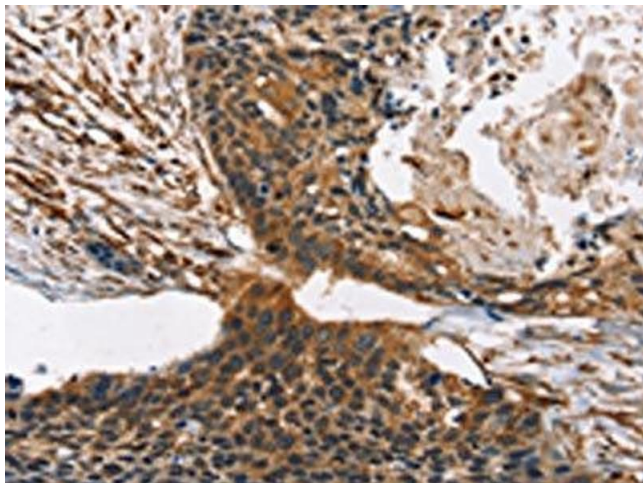
Buffer: -20 °C, pH 7.4 PBS, 0.05 % Sodium azide, 40 % Glycerol

Preservative: Sodium azide

Precaution of Use: This product contains Sodium azide: a POISONOUS AND HAZARDOUS SUBSTANCE which should be handled by trained staff only.

Storage: -20 °C,-80 °C

Storage Comment: Upon receipt, store at -20°C or -80°C. Avoid repeated freeze.



#### Immunohistochemistry

**Image 1.** The image on the left is immunohistochemistry of paraffin-embedded Human esophagus cancer tissue using ABIN7190317(CNGA1 Antibody) at dilution 1/40, on the right is treated with synthetic peptide. (Original magnification: x200)