

Datasheet for ABIN7190319
anti-CNTNAP3 antibody

2 Images

[Go to Product page](#)

Overview

Quantity:	100 µL
Target:	CNTNAP3
Reactivity:	Human
Host:	Rabbit
Clonality:	Polyclonal
Conjugate:	This CNTNAP3 antibody is un-conjugated
Application:	ELISA, Immunohistochemistry (IHC)

Product Details

Immunogen:	Synthetic peptide of Human CNTNAP3
Isotype:	IgG
Cross-Reactivity:	Human
Purification:	Antigen affinity purification

Target Details

Target:	CNTNAP3
Alternative Name:	CNTNAP3 (CNTNAP3 Products)
Background:	Background: The protein encoded by this gene belongs to the NCP family of cell-recognition molecules. This family represents a distinct subgroup of the neuroligins. NCP proteins mediate neuron-glia interactions in vertebrates and glial-glia contact in invertebrates. The protein encoded by this gene may play a role in cell recognition within the nervous system. Alternatively

Target Details

spliced transcript variants encoding different isoforms have been described but their biological nature has not been determined.

Aliases: CASPR3 antibody, Cell recognition molecule Caspr3 antibody, CNTNAP3 antibody, CNTNAP3A antibody, CNTP3_HUMAN antibody, Contactin associated protein like 3 antibody, Contactin-associated protein-like 3 antibody, FLJ14195 antibody, KIAA1714 antibody

UniProt: [Q9BZ76](#)

Application Details

Application Notes: ELISA:1:2000-1:5000, IHC:1:25-1:100,

Restrictions: For Research Use only

Handling

Format: Liquid

Buffer: -20 °C, pH 7.4 PBS, 0.05 % Sodium azide, 40 % Glycerol

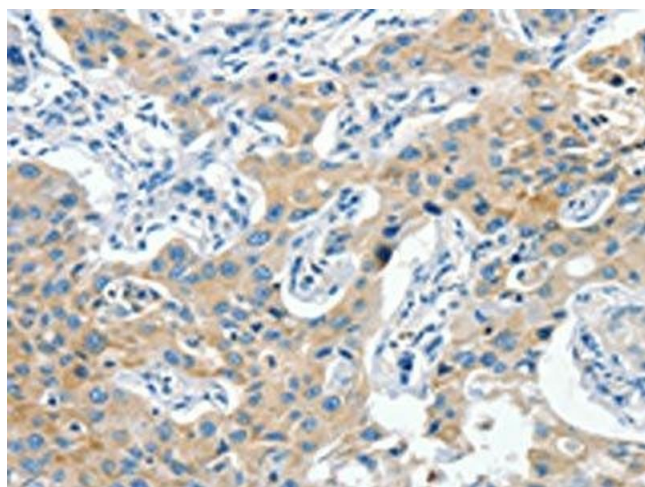
Preservative: Sodium azide

Precaution of Use: This product contains Sodium azide: a POISONOUS AND HAZARDOUS SUBSTANCE which should be handled by trained staff only.

Storage: -20 °C,-80 °C

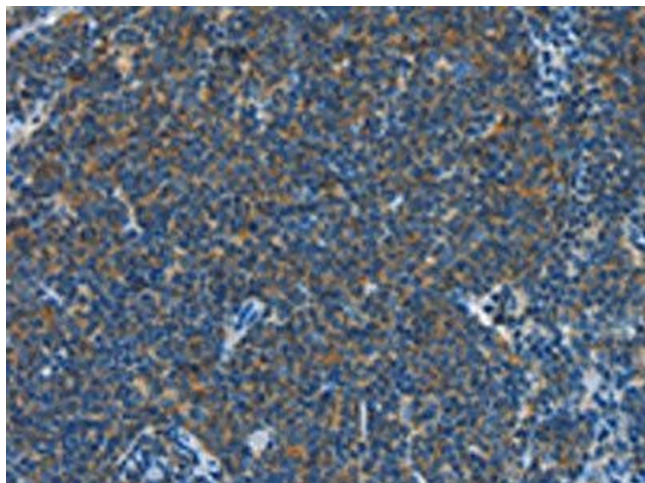
Storage Comment: Upon receipt, store at -20°C or -80°C. Avoid repeated freeze.

Images



Immunohistochemistry

Image 1. The image on the left is immunohistochemistry of paraffin-embedded Human lung cancer tissue using ABIN7190319(CNTNAP3 Antibody) at dilution 1/40, on the right is treated with synthetic peptide. (Original magnification: x200)



Immunohistochemistry

Image 2. The image on the left is immunohistochemistry of paraffin-embedded Human Lymphoma tissue using ABIN7190319(CNTNAP3 Antibody) at dilution 1/40, on the right is treated with synthetic peptide. (Original magnification: x200)