

Datasheet for ABIN7190329

**anti-COL7A1 antibody****2** Images[Go to Product page](#)

## Overview

Quantity:	100 µL
Target:	COL7A1
Reactivity:	Human
Host:	Rabbit
Clonality:	Polyclonal
Conjugate:	This COL7A1 antibody is un-conjugated
Application:	ELISA, Immunohistochemistry (IHC)

## Product Details

Immunogen:	Synthetic peptide of Human COL7A1
Isotype:	IgG
Cross-Reactivity:	Human
Purification:	Antigen affinity purification

## Target Details

Target:	COL7A1
Alternative Name:	COL7A1 ( <a href="#">COL7A1 Products</a> )
Background:	Background: This gene encodes the alpha chain of type VII collagen. The type VII collagen fibril, composed of three identical alpha collagen chains, is restricted to the basement zone beneath stratified squamous epithelia. It functions as an anchoring fibril between the external epithelia and the underlying stroma. Mutations in this gene are associated with all forms of dystrophic

## Target Details

epidermolysis bullosa. In the absence of mutations, however, an acquired form of this disease can result from an autoimmune response made to type VII collagen.

Aliases: Alpha 1 type VII collagen antibody, CO7A1\_HUMAN antibody, Col7a1 antibody, Collagen 7 antibody, Collagen alpha 1(VII) chain antibody, Collagen alpha-1(VII) chain antibody, Collagen type VII alpha 1 antibody, Collagen VII alpha 1 polypeptide antibody, CollagenVII antibody, EBD 1 antibody, EBD1 antibody, EBDCT antibody, EBR 1 antibody, EBR1 antibody, LC collagen antibody, Long chain collagen antibody, Long-chain collagen antibody

UniProt: [Q02388](#)

## Application Details

Application Notes: ELISA:1:1000-1:2000, IHC:1:25-1:100,

Restrictions: For Research Use only

## Handling

Format: Liquid

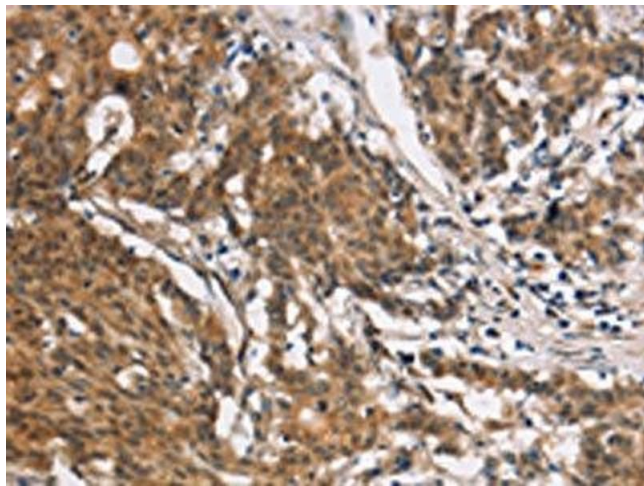
Buffer: -20 °C, pH 7.4 PBS, 0.05 % Sodium azide, 40 % Glycerol

Preservative: Sodium azide

Precaution of Use: This product contains Sodium azide: a POISONOUS AND HAZARDOUS SUBSTANCE which should be handled by trained staff only.

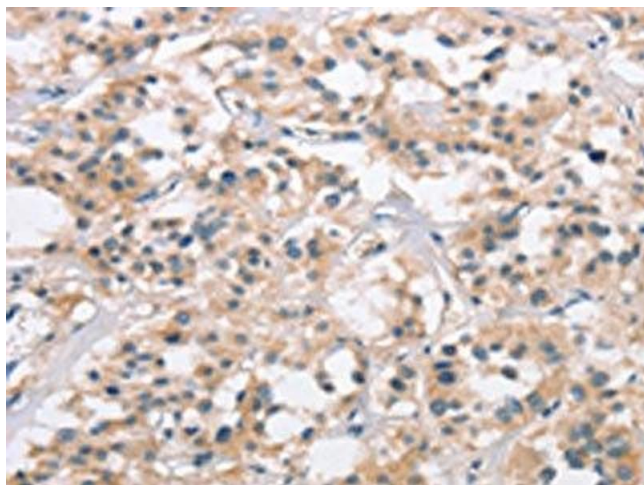
Storage: -20 °C, -80 °C

Storage Comment: Upon receipt, store at -20°C or -80°C. Avoid repeated freeze.



#### Immunohistochemistry

**Image 1.** The image on the left is immunohistochemistry of paraffin-embedded Human gastric cancer tissue using ABIN7190329(COL7A1 Antibody) at dilution 1/25, on the right is treated with synthetic peptide. (Original magnification: x200)



#### Immunohistochemistry

**Image 2.** The image on the left is immunohistochemistry of paraffin-embedded Human thyroid cancer tissue using ABIN7190329(COL7A1 Antibody) at dilution 1/25, on the right is treated with synthetic peptide. (Original magnification: x200)