

Datasheet for ABIN7190351

**anti-CRIM1 antibody****2** Images[Go to Product page](#)

## Overview

Quantity:	100 µL
Target:	CRIM1
Reactivity:	Human
Host:	Rabbit
Clonality:	Polyclonal
Conjugate:	This CRIM1 antibody is un-conjugated
Application:	ELISA, Immunohistochemistry (IHC)

## Product Details

Immunogen:	Synthetic peptide of Human CRIM1
Isotype:	IgG
Cross-Reactivity:	Human, Mouse, Rat
Purification:	Antigen affinity purification

## Target Details

Target:	CRIM1
Alternative Name:	CRIM1 ( <a href="#">CRIM1 Products</a> )
Background:	Background: This gene encodes a transmembrane protein containing six cysteine-rich repeat domains and an insulin-like growth factor-binding domain. The encoded protein may play a role in tissue development through interactions with members of the transforming growth factor beta family, such as bone morphogenetic proteins.

## Target Details

Aliases: AU015004 antibody, CRIM 1 antibody, CRIM-1 antibody, CRIM1 antibody, CRIM1\_HUMAN antibody, Cysteine rich motor neuron 1 protein antibody, Cysteine rich repeat containing protein S52 antibody, Cysteine rich transmembrane BMP regulator 1 (chordin like) antibody, Cysteine rich transmembrane BMP regulator 1 antibody, Cysteine-rich motor neuron protein 1 antibody, Cysteine-rich repeat-containing protein S52 antibody, MGC138194 antibody, Processed cysteine rich motor neuron 1 protein antibody, Processed cysteine-rich motor neuron 1 protein antibody, S52 antibody

UniProt: [Q9NZV1](#)

Pathways: [Growth Factor Binding](#)

## Application Details

Application Notes: ELISA:1:1000-1:2000, IHC:1:25-1:100,

Restrictions: For Research Use only

## Handling

Format: Liquid

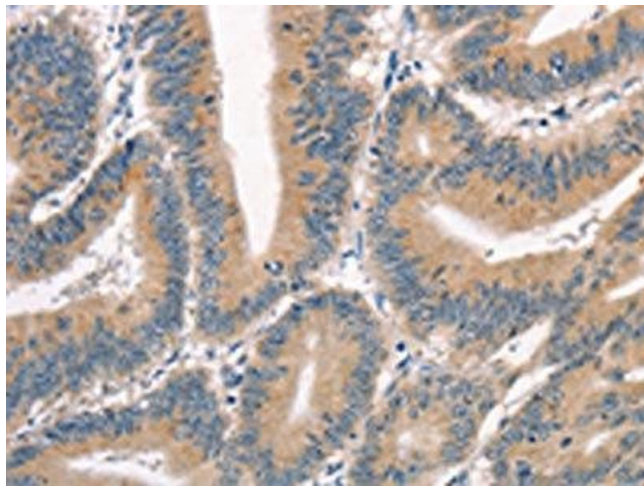
Buffer: -20 °C, pH 7.4 PBS, 0.05 % Sodium azide, 40 % Glycerol

Preservative: Sodium azide

Precaution of Use: This product contains Sodium azide: a POISONOUS AND HAZARDOUS SUBSTANCE which should be handled by trained staff only.

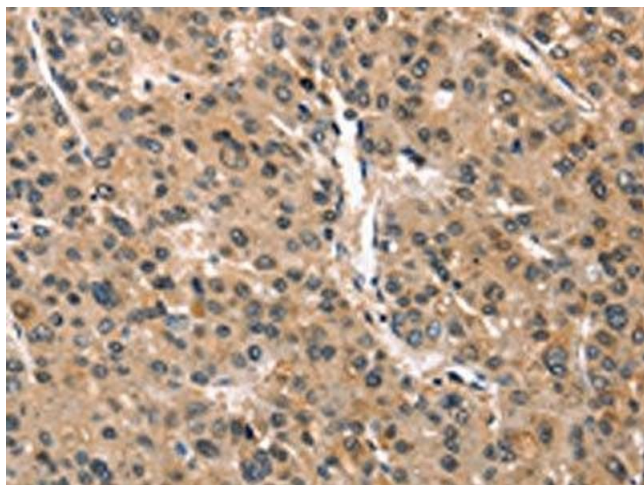
Storage: -20 °C, -80 °C

Storage Comment: Upon receipt, store at -20°C or -80°C. Avoid repeated freeze.



#### Immunohistochemistry

**Image 1.** The image on the left is immunohistochemistry of paraffin-embedded Human colon cancer tissue using ABIN7190351(CRIM1 Antibody) at dilution 1/25, on the right is treated with synthetic peptide. (Original magnification: x200)



#### Immunohistochemistry

**Image 2.** The image on the left is immunohistochemistry of paraffin-embedded Human liver cancer tissue using ABIN7190351(CRIM1 Antibody) at dilution 1/25, on the right is treated with synthetic peptide. (Original magnification: x200)