

Datasheet for ABIN7190421

anti-CYP46A1 antibody[Go to Product page](#)**2** Images

Overview

Quantity:	100 µL
Target:	CYP46A1
Reactivity:	Human
Host:	Rabbit
Clonality:	Polyclonal
Conjugate:	This CYP46A1 antibody is un-conjugated
Application:	Immunohistochemistry (IHC), ELISA

Product Details

Immunogen:	Synthetic peptide of Human CYP46A1
Isotype:	IgG
Cross-Reactivity:	Human, Mouse, Rat
Purification:	Antigen affinity purification

Target Details

Target:	CYP46A1
Alternative Name:	CYP46A1 (CYP46A1 Products)
Background:	<p>Background: This gene encodes a member of the cytochrome P450 superfamily of enzymes. The cytochrome P450 proteins are monooxygenases which catalyze many reactions involved in drug metabolism and synthesis of cholesterol, steroids and other lipids. This endoplasmic reticulum protein is expressed in the brain, where it converts cholesterol to 24S-</p>

Target Details

hydroxycholesterol. While cholesterol cannot pass the blood-brain barrier, 24S-hydroxycholesterol can be secreted in the brain into the circulation to be returned to the liver for catabolism.

Aliases: CYP46A1 antibody, CYP46Cholesterol 24-hydroxylase antibody, CH24H antibody, EC 1.14.14.25 antibody, Cholesterol 24-monooxygenase antibody, Cholesterol 24S-hydroxylase antibody, Cytochrome P450 46A1 antibody

UniProt: [Q9Y6A2](#)

Application Details

Application Notes: ELISA:1:1000-1:2000, IHC:1:25-1:100,

Restrictions: For Research Use only

Handling

Format: Liquid

Buffer: -20 °C, pH 7.4 PBS, 0.05 % Sodium azide, 40 % Glycerol

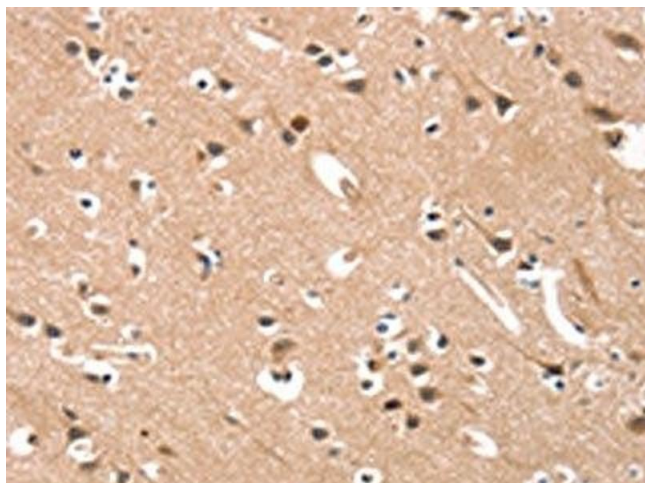
Preservative: Sodium azide

Precaution of Use: This product contains Sodium azide: a POISONOUS AND HAZARDOUS SUBSTANCE which should be handled by trained staff only.

Storage: -20 °C, -80 °C

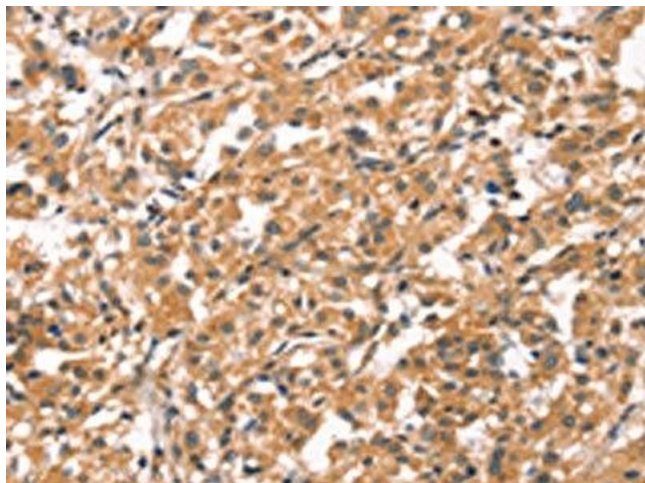
Storage Comment: Upon receipt, store at -20°C or -80°C. Avoid repeated freeze.

Images



Immunohistochemistry

Image 1. The image on the left is immunohistochemistry of paraffin-embedded Human brain tissue using ABIN7190421(CYP46A1 Antibody) at dilution 1/15, on the right is treated with synthetic peptide. (Original magnification: x200)



Immunohistochemistry

Image 2. The image on the left is immunohistochemistry of paraffin-embedded Human thyroid cancer tissue using ABIN7190421(CYP46A1 Antibody) at dilution 1/15, on the right is treated with synthetic peptide. (Original magnification: x200)