

Datasheet for ABIN7190461

anti-DEFA5 antibody**2** Images[Go to Product page](#)

Overview

Quantity:	100 µL
Target:	DEFA5
Reactivity:	Human
Host:	Rabbit
Clonality:	Polyclonal
Conjugate:	This DEFA5 antibody is un-conjugated
Application:	ELISA, Immunohistochemistry (IHC)

Product Details

Immunogen:	Synthetic peptide of Human DEFA5
Isotype:	IgG
Cross-Reactivity:	Human
Purification:	Antigen affinity purification

Target Details

Target:	DEFA5
Alternative Name:	DEFA5 (DEFA5 Products)
Background:	Background: Defensins are a family of microbicidal and cytotoxic peptides thought to be involved in host defense. They are abundant in the granules of neutrophils and also found in the epithelia of mucosal surfaces such as those of the intestine, respiratory tract, urinary tract, and vagina. Members of the defensin family are highly similar in protein sequence and distinguished

Target Details

by a conserved cysteine motif. Several of the alpha defensin genes appear to be clustered on chromosome 8. The protein encoded by this gene, defensin, alpha 5, is highly expressed in the secretory granules of Paneth cells of the ileum.

Aliases: alpha 5 antibody, DEF5 antibody, DEF5_HUMAN antibody, Defa antibody, Defa29 antibody, DEFA5 antibody, Defcr29 antibody, Defcr5 antibody, Defensin 5 antibody, Defensin alpha 5 antibody, Defensin alpha 5 Paneth cell specific antibody, Defensin alpha 5 preproprotein antibody, Defensin antibody, Enteric defensin antibody, HD 5 antibody, HD5 antibody, HD5(20-94) antibody, HD5(63-94) antibody, MGC129728 antibody, RD 5 antibody

UniProt: [Q01523](#)

Application Details

Application Notes: ELISA:1:1000-1:2000, IHC:1:25-1:100,

Restrictions: For Research Use only

Handling

Format: Liquid

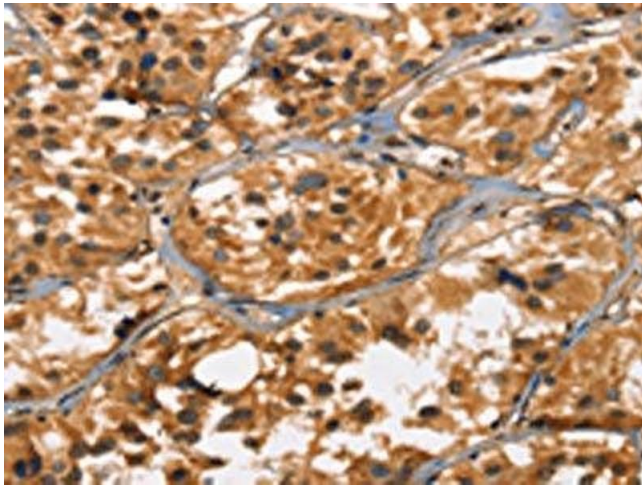
Buffer: -20 °C, pH 7.4 PBS, 0.05 % Sodium azide, 40 % Glycerol

Preservative: Sodium azide

Precaution of Use: This product contains Sodium azide: a POISONOUS AND HAZARDOUS SUBSTANCE which should be handled by trained staff only.

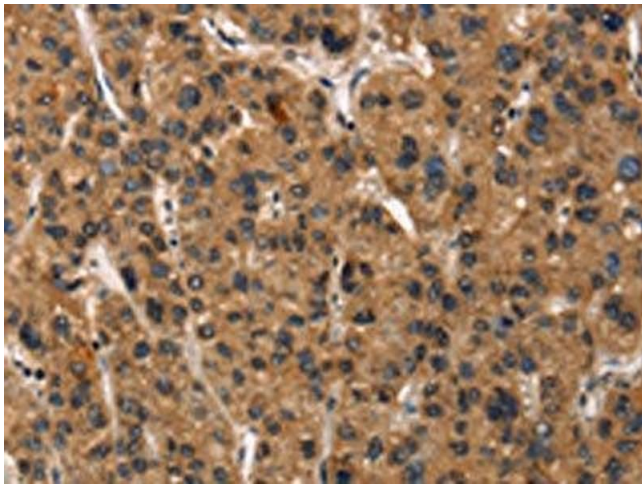
Storage: -20 °C, -80 °C

Storage Comment: Upon receipt, store at -20°C or -80°C. Avoid repeated freeze.



Immunohistochemistry

Image 1. The image on the left is immunohistochemistry of paraffin-embedded Human thyroid cancer tissue using ABIN7190461(DEFA5 Antibody) at dilution 1/15, on the right is treated with synthetic peptide. (Original magnification: x200)



Immunohistochemistry

Image 2. The image on the left is immunohistochemistry of paraffin-embedded Human liver cancer tissue using ABIN7190461(DEFA5 Antibody) at dilution 1/15, on the right is treated with synthetic peptide. (Original magnification: x200)