

Datasheet for ABIN7190483

anti-DMBT1 antibody[Go to Product page](#)**1** Image

Overview

Quantity:	100 µL
Target:	DMBT1
Reactivity:	Human
Host:	Rabbit
Clonality:	Polyclonal
Conjugate:	This DMBT1 antibody is un-conjugated
Application:	Immunohistochemistry (IHC), ELISA

Product Details

Immunogen:	Synthetic peptide of Human DMBT1
Isotype:	IgG
Cross-Reactivity:	Human, Mouse, Rat
Purification:	Antigen affinity purification

Target Details

Target:	DMBT1
Alternative Name:	DMBT1 (DMBT1 Products)
Background:	Background: Loss of sequences from human chromosome 10q has been associated with the progression of human cancers. The gene DMBT1 was originally isolated based on its deletion in a medulloblastoma cell line. DMBT1 is expressed with transcripts of 6.0, 7.5, and 8.0 kb in fetal lung and with one transcript of 8.0 kb in adult lung, although the 7.5 kb transcript has not been

Target Details

characterized. The DMBT1 protein is a glycoprotein containing multiple scavenger receptor cysteine-rich (SRCR) domains separated by SRCR-interspersed domains (SID). Transcript variant 2 (8.0 kb) has been shown to bind surfactant protein D independently of carbohydrate recognition. This indicates that DMBT1 may not be a classical tumor suppressor gene, but rather play a role in the interaction of tumor cells and the immune system.

Aliases: Apactin antibody, CRP antibody, CRP-[a] antibody, CRP-[b] antibody, CRP-ductin antibody, Crpd antibody, DBMT1 antibody, Deleted in malignant brain tumors 1 antibody, Deleted in malignant brain tumors 1 protein antibody, DMBT 1 antibody, DMBT1 antibody, DMBT1 prototype precursor antibody, DMBT1/6kb.1 protein precursor antibody, DMBT1/8kb.1 protein antibody, DMBT1/8kb.2 protein precursor antibody, DMBT1_HUMAN antibody, Ebnerin antibody, FLJ61058 antibody, Glycoprotein 300 antibody, Glycoprotein 340 antibody, Gp 340 antibody, Gp-340 antibody, gp300 antibody, GP340 antibody, Gp340 variant protein antibody, Hensin antibody, MGC164738 antibody, Mucin-like glycoprotein antibody, Muclin antibody, OTTHUMP00000020654 antibody, OTTHUMP00000020655 antibody, OTTHUMP00000020656 antibody, OTTHUMP00000020657 antibody, OTTHUMP00000020658 antibody, OTTHUMP00000020659 antibody, OTTHUMP00000020660 antibody, OTTHUMP00000020661 antibody, OTTHUMP00000020662 antibody, OTTHUMP00000020663 antibody, p80 antibody, Pancrin antibody, SAG antibody, Salivary agglutinin antibody, Surfactant pulmonary associated D binding protein antibody, Surfactant pulmonary associated protein D binding protein antibody, Surfactant pulmonary-associated D-binding protein antibody, Vomeroglandin antibody

UniProt: [Q9UGM3](#)

Pathways: [Activation of Innate immune Response](#)

Application Details

Application Notes: ELISA:1:1000-1:2000, IHC:1:10-1:50,

Restrictions: For Research Use only

Handling

Format: Liquid

Buffer: -20 °C, pH 7.4 PBS, 0.05 % Sodium azide, 40 % Glycerol

Preservative: Sodium azide

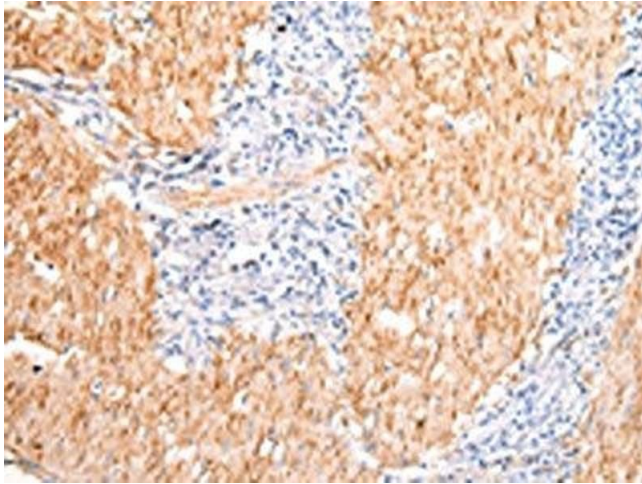
Precaution of Use: This product contains Sodium azide: a POISONOUS AND HAZARDOUS SUBSTANCE which should be handled by trained staff only.

Handling

Storage: -20 °C,-80 °C

Storage Comment: Upon receipt, store at -20°C or -80°C. Avoid repeated freeze.

Images



Immunohistochemistry

Image 1. The image on the left is immunohistochemistry of paraffin-embedded Human gastric cancer tissue using ABIN7190483(DMBT1 Antibody) at dilution 1/20, on the right is treated with synthetic peptide. (Original magnification: x200)