

Datasheet for ABIN7190535

**anti-EGR4 antibody**

3 Images

[Go to Product page](#)

## Overview

Quantity:	100 µL
Target:	EGR4
Reactivity:	Human
Host:	Rabbit
Clonality:	Polyclonal
Conjugate:	This EGR4 antibody is un-conjugated
Application:	Western Blotting (WB), ELISA, Immunohistochemistry (IHC)

## Product Details

Immunogen:	Synthetic peptide of Human EGR4
Isotype:	IgG
Cross-Reactivity:	Human, Mouse
Purification:	Antigen affinity purification

## Target Details

Target:	EGR4
Alternative Name:	EGR4 ( <a href="#">EGR4 Products</a> )
Background:	Background: Early growth response protein 4 (EGR-4), also known as AT133, is a protein that in humans is encoded by the EGR4 gene. EGR-4 is a member of the early growth response (EGF) family of zinc finger transcription factors. Transcriptional regulator. Recognizes and binds to the DNA sequence 5'-GCGGGGCG-3' (GSG). Activates the transcription of target genes whose

## Target Details

products are required for mitogenesis and differentiation.

Aliases: EGR4Early growth response protein 4 antibody, EGR-4 antibody, AT133 antibody

UniProt: [Q05215](#)

## Application Details

Application Notes: ELISA:1:2000-1:5000, WB:1:500-1:2000, IHC:1:25-1:100,

Restrictions: For Research Use only

## Handling

Format: Liquid

Buffer: -20 °C, pH 7.4 PBS, 0.05 % Sodium azide, 40 % Glycerol

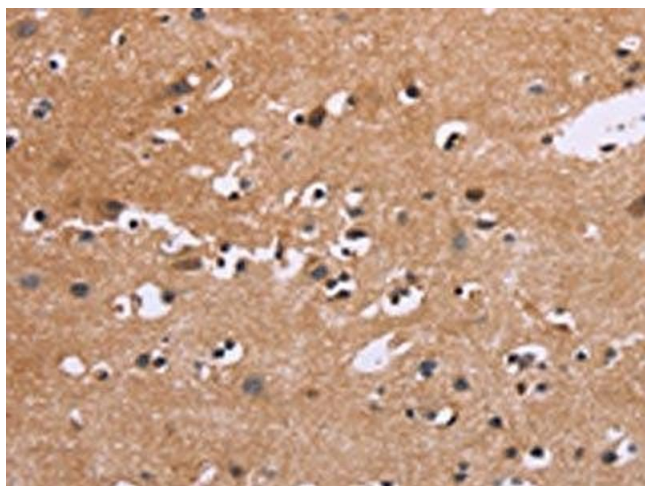
Preservative: Sodium azide

Precaution of Use: This product contains Sodium azide: a POISONOUS AND HAZARDOUS SUBSTANCE which should be handled by trained staff only.

Storage: -20 °C,-80 °C

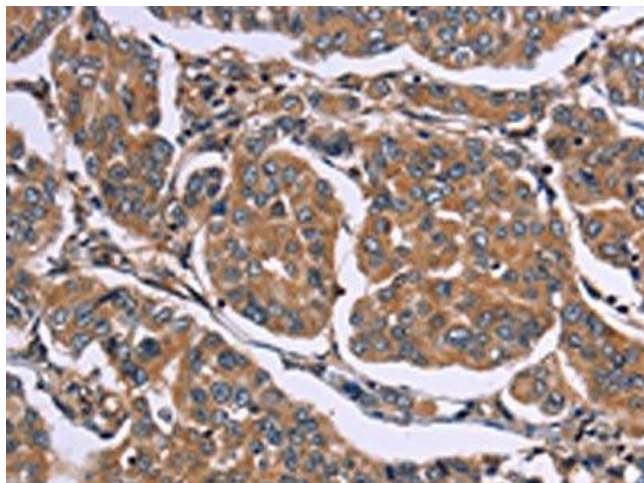
Storage Comment: Upon receipt, store at -20°C or -80°C. Avoid repeated freeze.

## Images



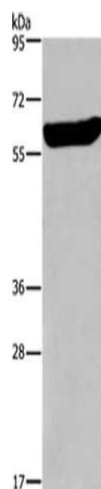
### Immunohistochemistry

**Image 1.** The image on the left is immunohistochemistry of paraffin-embedded Human brain tissue using ABIN7190535(EGR4 Antibody) at dilution 1/20, on the right is treated with synthetic peptide. (Original magnification: x200)



### Immunohistochemistry

**Image 2.** The image on the left is immunohistochemistry of paraffin-embedded Human breast cancer tissue using ABIN7190535(EGR4 Antibody) at dilution 1/20, on the right is treated with synthetic peptide. (Original magnification: x200)



### Western Blotting

**Image 3.** Gel: 6 % SDS-PAGE, Lysate: 40 µg, Primary antibody: ABIN7190535(EGR4 Antibody) at dilution 1/300 dilution, Secondary antibody: Goat anti rabbit IgG at 1/8000 dilution, Exposure time: 30 seconds